



Estimating the cumulative human exposures to pyrethroids by combined multi-route PBPK models : Application to the French population

Paul Quindroit, Rémy Beaudouin, Céline Brochot

► To cite this version:

Paul Quindroit, Rémy Beaudouin, Céline Brochot. Estimating the cumulative human exposures to pyrethroids by combined multi-route PBPK models : Application to the French population. *Toxicology Letters*, 2019, 312, pp.125-138. 10.1016/j.toxlet.2019.05.007 . ineris-03319061

HAL Id: ineris-03319061

<https://ineris.hal.science/ineris-03319061>

Submitted on 11 Aug 2021

HAL is a multi-disciplinary open access archive for the deposit and dissemination of scientific research documents, whether they are published or not. The documents may come from teaching and research institutions in France or abroad, or from public or private research centers.

L'archive ouverte pluridisciplinaire **HAL**, est destinée au dépôt et à la diffusion de documents scientifiques de niveau recherche, publiés ou non, émanant des établissements d'enseignement et de recherche français ou étrangers, des laboratoires publics ou privés.

1 **Estimating the cumulative human exposures to pyrethroids by**
2 **combined multi-route PBPK models: Application to the French**
3 **population**

4 Paul Quindroit, Rémy Beaudouin, Céline Brochot*

5 Institut National de l'Environnement Industriel et des Risques (INERIS), Unité Modèles pour
6 l'Ecotoxicologie et la Toxicologie (METO), Parc ALATA BP2, 60550 Verneuil en Halatte, France

7
8 * Corresponding author : Céline Brochot

9 Institut National de l'Environnement Industriel et des Risques (INERIS), Unité Modèles pour
10 l'Ecotoxicologie et la Toxicologie (METO), Parc ALATA BP2, 60550 Verneuil en Halatte, France

11 Tel: +33 3 44 55 68 50

12 Email: celine.brochot@ineris.fr

Abstract

Human biomarkers of exposure to pyrethroid insecticides are usually urinary concentrations of metabolites that can be specific to a pyrethroid or common to several compounds. We developed a global toxicokinetic model that links the external exposure to four widely-used pyrethroids and their isomers (deltamethrin and *cis* and *trans* isomers of permethrin, cypermethrin, and cyfluthrin) to the urinary concentrations of metabolites (*cis*- and *trans*-DCCA, 3-PBA, F-PBA and DBCA). This global model includes physiologically based pharmacokinetic models for each parent compound and one-compartment models for the metabolites. Existing *in vivo*, *in vitro* and *in silico* data were used for model calibration, and human toxicokinetic data for model evaluation. Overall, the global model reproduced the data accurately as about 90% of predictions were inside the 3-fold error interval. A sensitivity analysis showed that the most influent parameter for each urinary metabolite concentration was the fraction of parent compound that is transformed into that metabolite. The global model was then tested with realistic exposures for the French population: the predictions were consistent with biomonitoring data. The global model is a tool that will improve the interpretation of biomonitoring data for pyrethroids.

Keywords: PBPK model, pyrethroids, metabolites, cumulative exposure, aggregate exposure, biomonitoring

1 Introduction

Pyrethroids are a family of organic compounds that have numerous usages as pesticides and biocides. They were introduced on the market in the mid-1970s and are increasingly used since the 1990s due to their broad spectrum (Corbel and N'Guessan, 2013; Feo et al., 2010; Williams et al., 2008). Many biomonitoring studies have shown the wide exposure of the general population in several countries (Barr et al., 2010; Heudorf et al., 2006; Morgan, 2012; Ueyama et al., 2010). In France, biomonitoring studies showed that the adult population is exposed to higher levels than the German or North American populations (Dereumeaux et al., 2018; Fréry et al., 2011). Biomarkers of exposure that are used to estimate the population exposure are the urinary concentrations of five metabolites: 3-phenoxybenzoic acid (3-PBA), *cis*- and *trans*-3-(2,2-dichlorovinyl)-2,2-dimethylcyclopropane-1-carboxylic acid (*cis*-DCCA and *trans*-DCCA), 4-fluoro-3-phenoxybenzoic acid (F-PBA), 3-(2,2-dibromovinyl)-2,2-dimethylcyclopropane carboxylic acid (DBCA). These biomarkers can be specific to a pyrethroid parent compound or common to several pyrethroids (Ueyama et al., 2010). For example, DBCA is specific to deltamethrin and *cis*-DCCA and *trans*-DCCA are common to several pyrethroids (*cis*- and *trans*-permethrin, *cis*- and *trans*-cyfluthrin and *cis*- and *trans*-cypermethrin). Common metabolites therefore reflect a cumulative exposure to several pyrethroid compounds.

Toxicokinetic models for specific pyrethroids have been developed in humans to relate external exposure to internal metabolite or parent compound concentrations by describing the process of absorption, distribution, metabolism and excretion (ADME). These models can be multi-compartmental (Cote et al., 2014; Xue et al., 2014) or physiologically based pharmacokinetic models (PBPK) (Darney et al., 2018; Godin et al., 2010; Tornero-Velez et al., 2012; Wei et al., 2013) that can facilitate the extrapolation between individuals and between exposure scenarios (Andersen et al., 1995). Human PBPK models for deltamethrin (Godin et al., 2010) and permethrin (Darney et al., 2018; Tornero-Velez et al., 2012; Wei et al., 2013) are currently available. These models were developed based on *in vivo* experiments in rats and then extrapolated to humans using *in vitro* data (Godin et al., 2006; Hedges et al., 2018; Scollon et al., 2009; Willemin et al., 2015). The PBPK models for permethrin were applied to predict the levels of urinary metabolites using exposure scenarios including several sources of exposure.

For instance, Tornero-Velez et al. (2012) and Darney et al. (2018) applied their PBPK model for permethrin to predict the urinary concentrations of the DCCA metabolite in the US and French populations and compared the predictions to biomonitoring data. Similarly, Wei et al. (2013) assessed the permethrin exposure of flight attendants. These modeling works studied the link between the exposure to one pyrethroid (or a combination of the isomers of one pyrethroid) and the urinary concentration of only one metabolite.

The interpretation of the urinary levels of common metabolites measured in populations requires to go a step further in order to account for the cumulative exposure to several pyrethroids compounds together with the aggregate exposure from the different routes. Indeed it is particularly important to determine which part of the common metabolite is attributable to a pyrethroid, as the toxicity levels differ between pyrethroids (ATSDR, 2003). Recently Aylward *et al.* (2018) first attempted to integrate such information in the derivation of biomonitoring reference values for the urinary 3-PBA metabolite for risk assessment. They developed a 2-tier approach whose second tier accounts for the weight of the relative exposures to several pyrethroid compounds and for the differences in toxicity magnitude.

In this paper, we develop a global toxicokinetic model to predict the urinary levels in humans of four pyrethroid metabolites, *i.e.* *cis*- and *trans*-DCCA, F-PBA and DBCA, following exposures to permethrin, cypermethrin, cyfluthrin and deltamethrin. The 3-PBA metabolite was also included in the global model but not all its parent compounds were taken into account. A generic PBPK model was adapted to the toxicokinetics of these pyrethroid compounds (Beaudouin et al., 2010), and one-compartment models were developed for the metabolites. The models for the parent compounds and the metabolites were linked together. A total of seven parent compounds (*cis* and *trans* isomers of permethrin, cypermethrin, cyfluthrin, plus deltamethrin), and a total of 5 metabolites were included in the global model. This latter was evaluated before being applied to the estimation of the exposure of the French adult population. The cumulative and aggregated exposure to the four pyrethroids was calculated using national data, including exposure from food, air and dust. The model predictions of the urinary levels were compared to the biomonitoring data of the National Health Nutrition Study (Fréry et al., 2011) for men and women. Finally, a sensitivity analysis was performed to identify the model

parameters that influence the internal concentrations of parent compounds and the urinary concentration of metabolites in this context of multi-routes and multiple compounds.

2 Materials and Methods

2.1 Chemicals

Permethrin, cypermethrin and cyfluthrin are combinations of *cis* and *trans* isomers whereas deltamethrin is a pure *cis*-isomer. A total of 7 parent compounds was then studied in our work. All these pyrethroids undergo extensive metabolic transformations to form several chemical species. Table 1 presents the parent compounds with their respective urinary metabolites that are usually measured in biomonitoring studies. Among the five metabolites, only DBCA is specific to one pyrethroid, namely deltamethrin (DLT). F-PBA is specific to cyfluthrin but can be formed from the two isomers. *Cis*- and *trans*-DCCA can be formed respectively from the *cis* and *trans* isomers of permethrin (*cis*-PM and *trans*-PM), cypermethrin (*cis*-CYP and *trans*-CYP) and cyfluthrin (*cis*-CYF and *trans*-CYF). The metabolite 3-PBA is common to the four pyrethroids and their isomers, and can also be generated from other pyrethroids (Starr et al., 2008).

2.2 Model structure for the parent compounds

A generic PBPK model, previously developed by Beaudouin et al. (2010), was used to describe the toxicokinetics of the pyrethroids in humans. This model is based on a detailed description of the anatomy of the human body and comprises 23 tissue compartments. The model structure is similar for men and women. Several changes were made to account for the specificities of pyrethroids (Figure 1). In the following, the quantities are in mg, the concentrations in mg/L, the volumes in L, and the blood flows in L/h.

Ingestion and inhalation were the exposure routes included in the initial model. Dermal contact was then added. Dermal absorption was modeled as a one-directional diffusive process across the stratum corneum and the viable epidermis. The skin compartment of the initial model was subdivided into two compartments representing the stratum corneum that is in contact with the skin's surface, and the

vascularized tissue (named *skin* in the following). The transfer of chemicals between the different layers is modelled by diffusion processes (Tornerio-Velez et al., 2012):

$$\frac{d(Q_{surf})}{dt} = Q_{cut}(t) - K_{ds} \times Q_{surf}(t) \quad (\text{Eq. 1})$$

$$\frac{d(Q_{sc})}{dt} = K_{ds} \times Q_{surf}(t) - K_{dv} \times Q_{sc}(t) \quad (\text{Eq. 2})$$

$$\frac{d(Q_{Sk})}{dt} = K_{dv} \times Q_{sc}(t) + F_{Sk} \times \left(C_{art}(t) - \frac{C_{Sk}(t)}{PC_{Sk:Bl}} \right) \quad (\text{Eq. 3})$$

where Q_{surf} is the amount on the skin's surface, Q_{cut} , Q_{sc} and Q_{Sk} are respectively the amounts applied on the skin, in the stratum corneum, and in the vascularized tissue (skin), F_{Sk} is the entering blood flow in skin, C_{art} and C_{Sk} are respectively the concentrations in arterial blood and skin, $PC_{Sk:Bl}$ is the skin:blood partition coefficient, and K_{ds} and K_{dv} (h^{-1}) are the uptake rates between the skin's surface and the stratum corneum and between the stratum corneum and the skin compartment respectively.

Experimental studies in rodents showed that the distribution of pyrethroids is blood flow-limited in most of the compartments except the ones with a physiological barrier or slowly perfused (*i.e.*, brain, fat and muscle) (Mirfazaelian et al., 2006; Tornerio-Velez et al., 2012; Willemin et al., 2016). These compartments were then subdivided into a vascularized compartment and an intracellular space. The exchanges between the two sub-compartments are governed by a permeability coefficient. In a compartment T , the quantities in the vascular (Q_{blT}) and the intracellular spaces (Q_T) are respectively:

$$\frac{d(Q_{blT})}{dt} = F_T \times (C_{art}(t) - C_{blT}(t)) - PA_T \times \left(C_{blT}(t) - \frac{C_T(t)}{PC_{T:Bl}} \right) \quad (\text{Eq. 4})$$

$$\frac{d(Q_T)}{dt} = PA_T \times \left(C_{blT}(t) - \frac{C_T(t)}{PC_{T:Bl}} \right) \quad (\text{Eq. 5})$$

where F_T is the entering blood flow in the tissue, C_{art} the concentration in the arterial blood, C_{blT} the concentration in the vascular space of the compartment, C_T the concentration in the tissue, PA_T (L/h) the permeability coefficient, and $PC_{T:Bl}$ the tissue:blood partition coefficient.

Absorbed pyrethroids are eliminated from the body by metabolism. Metabolism in humans is rapid with a half-life in blood of few hours; it occurs in the liver and the intestines (Crow et al., 2007; Godin et al.,

2007; Gotoh et al., 1998). Metabolism was described by a first order process. The total rate of metabolism (R_{PYR} , mg/h) is therefore:

$$R_{PYR}(t) = R_{liv_PYR}(t) + R_{GI_PYR}(t) \quad (\text{Eq. 6})$$

$$\text{with } R_{T_PYR}(t) = CL_{T_PYR} \times C_{T_PYR}(t) \quad (\text{Eq. 7})$$

where R_{T_PYR} (mg/h) is the metabolic rate of pyrethroids in the tissue T (here liver and GI tract), CL_{T_PYR} (L/h) the clearance in the tissue T , and C_{T_PYR} (mg/L) the concentration in the tissue T .

2.3 Model structure for metabolites

Simple one-compartment models were used to describe the toxicokinetics of the metabolites, *i.e.* their formation and urinary elimination. The formation of the metabolite MET from the pyrethroid PYR ($RoF_{PYRtoMET}$) was expressed as a fraction ($Frac_{PYRtoMET}$) of the global metabolic rate of PYR (R_{PYR} , Eq. 6) (Willemin et al., 2016):

$$RoF_{PYRtoMET}(t) = Frac_{PYRtoMET} \times R_{PYR}(t) \times \frac{MW_{MET}}{MW_{PYR}} \quad (\text{Eq. 8})$$

where MW_X is the molecular weight of the chemical X . The total formation rate of the metabolite MET was obtained by summing the formation rates from all its parent compounds. The resulting amount of the metabolite MET (A_{MET}) was then obtained by subtracting the urinary elimination:

$$\frac{dA_{MET}}{dt} = \sum_{X \in PYR} RoF_{XtoMET}(t) - K_{uri_MET} \times A_{MET}(t) \quad (\text{Eq. 9})$$

with K_{uri_MET} (h^{-1}) the urinary excretion rate constant. The concentration in urine was obtained by dividing the amount of metabolite formed with the urinary flow (F_{urine} , L/h).

2.4 Model parameterization for parent compounds

The values of the PBPK model's parameters are reported in Table 2. The physiological parameters of the PBPK models, *i.e.* bodyweight, and organ volumes and perfusion, were implemented as proposed by Beaudouin et al. (2010) for men and women. The additional parameters (the blood volume fractions, BV) were obtained from Brown et al. (1997) ($BV_{fat} = 0.02$; $BV_{brain} = 0.03$; $BV_{muscle} = 0.04$).

The compound-specific parameters were set using published experimental or computational studies. Because of the variety of the study designs (*e.g.* organisms (humans or rodents) and cells), a priority order was defined to select the study that would be used for setting a parameter's value: *in vivo* human data, *in vitro* human data, *in vivo* animal data, and QSAR predictions. Studies with separate isomers experiments were also preferred to experiments done with a combination of isomers.

Oral absorption and excretion parameters were set using animal data for deltamethrin and *cis*- and *trans*-permethrin (Godin et al., 2010; Willemin et al., 2016). The parameter estimates were obtained by calibrating a PBPK model with animal toxicokinetic data. As no data were available for cypermethrin and cyfluthrin, the values of permethrin (isomer specific) were used for these compounds. For dermal absorption, the empirical values estimated by Tornero-Velez et al. (2012) for permethrin were used for all the compounds.

Distribution in the tissues is governed by the tissue:blood partition coefficients and the permeability coefficients for diffusion-limited compartments. Similarly to absorption, estimates obtained from toxicokinetic experiments in rats were used for deltamethrin and permethrin (Godin et al., 2010; Willemin et al., 2016). Since no *in vivo* data for cypermethrin and cyfluthrin were available, the isomer specific estimates of permethrin were used for the permeability coefficients, and a QSAR model developed by Knaak et al. (2012) for the tissue:blood partition coefficients.

Metabolic clearances (CL_{T_PYR} in Eq. 7) were defined with human *in vitro* studies using hepatocytes (Willemin et al., 2015) or hepatic microsomes (Godin et al., 2006; Scollon et al., 2009). Because no isomer-specific data were available for cypermethrin and cyfluthrin, the same value was used for both isomers. Experiments with β -cyfluthrin were used, as no data were available for cyfluthrin and as β -cyfluthrin is an enriched isomeric form of the two biologically active diastereoisomeric pairs of isomers of cyfluthrin.

2.5 Model parameterization for metabolites

The parameters of the one-compartment model for the metabolites are the fractions formed from parent compounds ($Frac_{PYRtoMET}$ in Eq. 8), the urinary elimination rates (K_{uri_MET} in Eq. 9), and the urinary flow

(F_{urine}). Toxicokinetic studies with controlled exposure of human volunteers were used to set values to the compound-specific parameters (Leng et al., 1997b; Ratelle et al., 2015a, b; Sams and Jones, 2012; Woollen et al., 1992). The metabolite fractions ($Frac_{PYRtoMET}$) were computed using the percentage of the administered parent compound recovered as a metabolite corrected by the bioavailability (see Supplementary Data for details). The urinary elimination rates (K_{uri_X}) were computed with the apparent half-life ($t_{1/2}$) in urine obtained by the analysis of the elimination data provided in the experimental studies:

$$K_{uri_X} = \frac{\ln 2}{t_{1/2}} \quad (\text{Eq. 10})$$

When several values for $t_{1/2}$ were available, the average was used (see the Supplementary Data). The parameters values for the metabolites' models are reported in Table 3. The urine flow rate (F_{urine}) was set to 0.07 L/h for men and 0.05 L/h for women (ICRP, 2002).

2.6 Model evaluation

The global model was evaluated using all the human toxicokinetic studies. At least one study was available for each parent compound: permethrin (Gotoh et al., 1998; Ratelle et al., 2015b; Tomalik-Scharte et al., 2005), cypermethrin (Ratelle et al., 2015a; Woollen et al., 1992), cyfluthrin (Leng et al., 1997a; Leng et al., 1997b), and deltamethrin (Sams and Jones, 2012). The characteristics of the *in vivo* studies are presented in Table 4. The global model was applied and used to predict the measured data in each of these studies. Monte Carlo simulations (10,000) were performed to simulate inter-individual variability and uncertainty in parameters' values. Truncated normal distributions were assigned to the compound-specific parameters (absorption, metabolism, partition coefficients, permeability coefficients) with a variation of 30% of the mean value of the parameter and lower and upper bounds of 0.01% and 100% of the mean value of the parameter (except for fractions of metabolites that were truncated at 1). Bodyweight was set to the values of study volunteers. For each simulation, a vector of random parameter values was drawn from the probability distributions and was used as input of the global toxicokinetic model.

2.7 Sensitivity analyses

Sensitivity analyses (SA) were conducted on the global model to identify the parameters with the most impact on the blood concentrations of the parent compounds, and the urinary concentrations of the metabolites. SA were also performed for the brain concentrations regarding the neurotoxicity of pyrethroids under acute exposures. Continuous exposures similar for all parent compounds were assumed: 1 ng/kg/day for oral intakes, 1×10^{-3} ng/L for air concentration, and 1 ng/day for dermal contact. The sensitivity analyses were performed on concentrations at steady state.

We used two types of sensitivity analyses: first the Morris method to identify a subset of the most influential parameters among the 199 parameters of the global model, then the Sobol's method on this subset of parameters to quantify their impact on the concentrations of interest. The Morris method (Morris, 1991) is a one-factor-at-a-time (OAT) method where the impact of changing the values of input parameter is evaluated one by one in each run. It is a qualitative method providing a ranking of input parameters in order of importance. The method is particularly well-suited when the number of parameters is high. Each input factor may assume a discrete number of values, called levels (p), which are chosen within the parameter range of variation. Three sensitivity measures are proposed for each parameter: μ (the mean) and μ^* (the mean of the absolute values) that estimate the overall effect of the factor on the output, and σ (the standard deviation) that estimates the ensemble of the second- and higher-order effects in which the parameter is involved. Thus, a high value of μ^* means that the parameter contributes to the dispersion of the output, and σ measures the linearity of the effects or the interaction with the other parameters. The sample size is defined by a number, r . Uniform distributions were assigned to the parameters of the global model with a coefficient of variation of 10% around their mean values. The number of realizations (r) was set to 1,000 and number of levels (p) to 6.

Model parameters with the highest impact on the concentrations of interest were selected to run a global sensitivity analysis with the Sobol's method (Saltelli et al., 2008; Sobol et al., 2007). This is a global variance-based method, using the decomposition of the model output's variance into a sum of terms depending on single factors (model parameters) and on interaction terms of higher order. It can handle nonlinear and non-monotonic functions and models. Model output variances were estimated using

Monte Carlo integrals. Two independent input sample $n_I \times p_I$ matrices (the “sample” matrix M1 and the “resample” matrix M2), where n_I (100,000) is the sample size and p_I the number of parameters, were used to compute the Monte Carlo integrals. Every row in M1 and M2 represents a possible parameter combination. Two indices were computed: the first order index (FOI) that is the variance contribution of one parameter to the total model variance, and the total order index (TOI) that is the result of the main effect of the parameter and of its interactions with the other parameters.

2.8 Application of the global model to the exposure of the French population

The global model was used to link the external exposure of the four pyrethroids to the urinary metabolite concentrations of the French population. The following exposure routes were considered: the ingestion of contaminated food, the inhalation in indoor and outdoor environments, and the dermal contact via suspended particles in air and sedimented dust.

2.8.1 Calculation of the aggregated exposure

Food ingestion was estimated using the pyrethroid concentrations measured different food groups collected on the French market (ANSES, 2011) and the average consumption of food and liquids of the French population (ANSES, 2009). The following equation was used to calculate the daily intake (D_{oral} in mg/kg BW/day):

$$D_{oral} = \sum C_{food} \times IR_{food} \quad (\text{Eq. 11})$$

with C_{food} the pyrethroids’ concentration in a food group (mg/kg of food) and IR_{food} the intake rates for adults (kg of food/kg BW/day) of the food group.

The method proposed by Hermant et al. (2017) for estimating the exposure from inhalation and dust of permethrin was applied for all the pyrethroids of interest. Exposure from inhalation (C_{inh} in ng/m³) was estimated by combining exposure from indoor and outdoor contaminated air:

$$C_{inh} = (C_{in} \times T_{in}) + (C_{out} \times T_{out}) \quad (\text{Eq. 12})$$

where C_{in} and C_{out} (ng/m³) are the indoor and outdoor concentrations respectively, and T_{in} (0.85) and T_{out} (0.15) the fractions of the time spent indoors and outdoors respectively (Klepeis et al., 2001). The

indoor air concentrations were taken from Blanchard et al. (2014) and from The French Central Laboratory of Air Quality Monitoring for outdoor air (LCSQA, 2009).

Dermal exposure is also possible by contact with suspended particles and sedimented dust (Weschler and Nazaroff, 2008). The dermal contact with the airborne particles ($D_{dermal_particles}$ in ng/d) was calculated as follows (Shi and Zhao, 2014):

$$D_{dermal_particles} = (vp \times C_{in} \times S \times Frac_{exp} \times T_{in}) + (vp \times C_{out} \times S \times Frac_{exp} \times T_{out}) \quad (\text{Eq. 13})$$

where C_{in} and C_{out} (ng/m³) are the indoor and outdoor concentrations respectively, T_{in} (h/d) and T_{out} (h/d) are the length of time indoors and outdoors respectively, vp the deposition velocity of airborne particles onto the skin's surface (m/h), $Frac_{exp}$ the fraction of body exposed (-), and S the body surface area (m²). The dermal contact with dust (D_{dermal_dust} in ng/d) was given by (Beko et al., 2013):

$$D_{dermal_dust} = C_{dust} \times Frac_{exp} \times S \times Mp \times t \quad (\text{Eq. 14})$$

where C_{dust} (ng/g) is the concentration in dust, $Frac_{exp}$ the fraction of body exposed (-), S the body surface area (m²), Mp the is the amount of dust adhering to skin (g/m²) and t the daily exposure duration (h/d). The aggregate dermal dose (D_{dermal} in ng/d) is obtained by summing these two exposure pathways:

$$D_{dermal} = D_{dermal_dust} + D_{dermal_particles} \quad (\text{Eq. 15})$$

When a compound was not detected in food, outdoor or indoor air, or dust, the concentration was set to the limit of detection divided by two when it was known (food and outdoor air), otherwise to the limit of quantification divided by two (indoor air and dust) (EPA, 2000). None of the data used for the calculation of the exposure scenarios makes a distinction between the isomers of a pyrethroid. The ratios of *cis*- and *trans*-stereoisomers observed in the commercial formulations of the pyrethroids were then used to compute the dose of each isomer. The *cis:trans* ratios usually observed in the commercial formulations and used here are 40:60 for permethrin and cyfluthrin, and 42:58 for cypermethrin.

2.8.2 Study population and biomonitoring data

The French Nutrition & Health Survey (ENNS study) is a cross-sectional study carried out in the general French population. It was performed between February 2006 and July 2007. The study population included adults aged 18–74 years living in continental France in 2006–2007. About 400 adults (257 women and 139 men) participated in the pyrethroid pesticides study (Fréry et al., 2011). Questionnaires were used to collect individual characteristics. For instance, the bodyweight of each participant was recorded (65.49 ± 15.01 kg for women and 77.93 ± 12.69 kg for men). The Dubois and Dubois (1989) equation was used to compute the body surface area with the weight and height of participants (1.69 ± 0.18 m² for women and 1.92 ± 0.16 m² for men) that is used for the computation of the exposure via dermal contact. One spot sample of first morning urines was also collected for each participant in order to measure the major urinary metabolites of pyrethroids. The detection rates were 98.5% for 3-PBA, 83.1% for DBCA, 56.1% for *cis*-DCCA, 86.1% for *trans*-DCCA and 29.8% for F-PBA (LOD = 0.03 µg/L and LOQ = 0.1 µg/L). The geometric mean of the quantified urinary metabolite concentrations (µg/L) and the 95% interval of confidence were: 0.74 [3.41; 6.15] for 3-PBA, 0.37 [0.48; 4.20] for DBCA, 0.17 [0.67; 2.17] for *cis*-DCCA, 0.39 [2.44; 5.27] for *trans*-DCCA and 0.68 [0.64; 1.24] for F-PBA.

2.8.3 Exposure scenario and simulations

Monte Carlo simulations were performed to account for inter-individual variability and uncertainty. Truncated normal distributions were assigned to the compound-specific parameters (absorption, metabolism, partition coefficients, permeability coefficients, urinary excretion) with the mean value and a coefficient of variation of 30%. The lower and upper bounds were defined as 0.01% and 100% of the mean value (except for fractions of metabolites that are truncated at 1). The intakes were also affected by uncertainty and variability. Normal distributions were assigned to all intakes (diet intakes, inhaled concentration and applied dermal dose) with the mean value computed and a coefficient of variation of 500%. Normal distributions were also set to the bodyweight according to the actual distributions observed in the ENNS study. For each Monte Carlo simulation (10,000), a vector of random parameter values was drawn from the probability distribution functions and was used as input of the PBPK model.

309 A continuous scenario of exposure by inhalation, oral and dermal contact was considered, and the model
310 was run until steady-state in blood was achieved (1 month). The urinary concentrations of the five
311 metabolites were recorded after 1 month of exposure.

312 **2.9 Software**

313 GNU MC Sim v5.6.6 simulation software was used to implement the PBPK model (Bois, 2009). The R
314 package “sensitivity” was used (version 1.15.2) (Iooss et al., 2018): the “morris” method for the Morris
315 sensitivity analysis, and the “soboljansen” method for the Sobol sensitivity analysis.

316

3 Results

3.1 Model evaluation

We compared the experimental data observed in the human toxicokinetic studies with the corresponding model predictions (10,000 Monte Carlo simulations) (Figure 2). The data correspond to 189 measurements (concentrations or urinary excretion rates) related to five metabolites (3-PBA, F-PBA, *cis*-DCCA, *trans*-DCCA and DBCA) and one parent compound (permethrin). No human data were available to evaluate the toxicokinetics of the other three parent compounds predicted by the model. Figure 3 presents the comparison between the data and the model predictions, *i.e.* the average of the Monte Carlo simulations. Overall, the global model reproduced well the data: 98% of the predictions fall into the 10-fold interval with about 65% of the predictions in the 2-fold error interval, and 89% in the 3-fold one (Table S2 in Supplementary Data). The level of predictability is similar (about 60% in the 2-fold error interval) for the metabolites common to several pyrethroids (3-PBA, *cis*- and *trans*-DCCA) and is higher for the metabolites specific to one pyrethroid (DBCA and F-PBA), *i.e.* up to 90%. This could be explained by the fact that several studies were available for the common metabolites for model calibration and evaluation whereas only one study was available for DBCA and two studies, that were performed in the same laboratory, for F-PBA. The difference in predictability may then partly be a result of variability between studies. For permethrin (the only parent compound with data), only 9 data points were available for both isomers from one study (Gotoh et al., 1998). Most of the predictions were within the 3-fold error interval. It should be noted that, in this study, the exposure resulting from poisoning and was unknown. Moreover, only one person was involved whereas other studies involved several volunteers (except one study with cyfluthrin administered by ingestion).

Oral ingestion is the exposure route used in most of the studies (130 out of 189 data points). This route presents levels of predictability similar to the whole dataset, like the dermal contact route. For inhalation, predictability is better with almost all the predictions within the 2-fold interval (96%) but only one study for one parent compound (cyfluthrin) was available. The dermal route is the only route with predictions falling beyond the 10-fold error interval (about 11%), and they were all during the compound's absorption phase. We also compared the predictability between the absorption and

elimination phases (54 vs. 135 data points). Similar predictability levels were observed but all predictions falling beyond the 10-fold interval were all during absorption.

In general, the toxicokinetic profiles are well reproduced by the model. For each profile, a confidence interval calculated with the Monte-Carlo simulations was obtained. About 88% of the datapoints (165 over 189) are within the confidence intervals. The average profile is encompassed in the 95% confidence interval with an upper bound corresponding to a 2-fold factor and a lower bound to a 0.2-fold factor compared to the mean, but the width of the confidence interval tends to increase as time since administration increases. The graphs of the toxicokinetic profiles with the 95% confidence interval together and the experimental data are given in Figure S1 in the Supplementary Data for all studies.

Toxicokinetic parameters (maximum peak concentrations or excretion rates, time-to-peak levels and elimination half-lives) were computed from the predicted toxicokinetic profiles (Table 5). The maximum peak concentration or excretion rate and elimination half-life were well predicted by the model, and in general the time to peak was slightly over-estimated. Our analysis of different data sets also highlighted that the toxicokinetics of 3-PBA in urine observed in the study by Woollen et al. (1992) differ from other studies (Ratelle et al., 2015a, b; Sams and Jones, 2012). The measured excretion rate was very high and the elimination half-life quite low unlike the observations in the other studies and the model predictions. Overall, all our results show that the global model is able to reproduce adequately the urinary toxicokinetics of the metabolites with a high level of predictability.

3.2 Sensitivity analyses

The Morris method was used to select a subset of the 199 parameters that had the most influence on the parent compounds concentrations in blood and brain, and on the urinary metabolite concentrations. The Morris plots for all the model outputs of interest are provided in Figure S2 in the Supplementary Data. We observed that each model output is sensitive to a small number of parameters, and that the low standard deviation values indicate probably no interaction between parameters. We selected the 8 most influential parameters towards urinary metabolite concentrations and the 4 most influential parameters towards internal concentrations to run the variance-based Sobol's method. In the end, this selection includes a total of 46 parameters (list given in Table S3 in the Supplementary Data). For all compounds,

these parameters are related to partitioning into the liver and brain, to metabolism and to absorption of the parent compounds.

The first-order (FOI) and total order indices of the model parameters obtained by the Sobol analyses are presented in Figure 3 for metabolites and Figure S3 in the Supplementary Data for the parent compounds. For all outputs, the Sobol results confirmed the Morris analyses on the absence of interaction between the model parameters meaning that the effects of the parameter on the model outputs are independent. A relatively high uncertainty of the prediction of the FOI was observed that may be a result of a high number of non-sensitive parameters integrated into the analysis and/or of the correlations between the parameters. The parameters with a high influence on blood and brain concentrations were absorption and excretion parameters, partition coefficient between liver and blood, liver clearance and diffusion in brain. These results are in agreement with previous published sensitivity analyses on the toxicokinetics of permethrin and deltamethrin (Darney et al., 2018; Godin et al., 2010; Mirfazaelian et al., 2006; Wei et al., 2013).

For the urinary metabolites' concentrations, the results showed that urinary metabolite concentrations are mostly influenced by the fractions of the metabolic rates of parent compound that lead to each metabolite ($Frac_{PYRtoMET}$). Some parameters related to absorption (*i.e.* absorption from stomach, gut and stomach-gut transfer) also influenced urinary metabolite concentrations to a lesser extent. Furthermore, the sensitivity analyses allowed to classify the parent compounds in terms of influence on the urinary concentrations of the common metabolites. For *cis*- and *trans*-DCCA, the ranking is: permethrin, cypermethrin and cyfluthrin. For 3-PBA, we obtained: *trans*-permethrin, *trans*-cypermethrin, *cis*-permethrin and, to a lesser extent, *cis*-cypermethrin and deltamethrin. Finally, regarding F-PBA which is specific to cyfluthrin, the *trans* isomer appears to have a higher influence than the *cis* isomer.

3.3 Simulation of urinary levels in the French population

The exposure doses calculated for the French population for the three exposure routes are presented in Table 6. A large part of the calculated oral daily intakes comes from the fact that in samples where no pyrethroids were detected, the LOQ or LOD divided by 2 was used. That tends to smooth the daily intakes between the pyrethroids. Indeed the detection rates in food were very low (<1%) for pyrethroids

in all the food items and none of the investigated pyrethroids were detected in tap water (ANSES, 2011). That could be due to the rather high limits of detection (LOD) (5 µg/kg for cyfluthrin and cypermethrin and 3 µg/kg for permethrin and deltamethrin). Regarding the other routes, the frequency of quantification in dust was 84% for permethrin (n=25, LOQ = 0.09 µg/g) and 52% for cypermethrin (n=23, LOQ = 0.06 µg/g) (Blanchard et al., 2014). For airborne particles, the frequencies of quantification were 40% for permethrin (n = 30, LOQ = 0.002 ng/m³) and 3% for cypermethrin (n=30, LOQ = 0.2 ng/m³) (Blanchard et al., 2014). For outdoor air, the samples came from 12 French regions and were taken between 2001 and 2007. The sample sizes ranged from 42 for permethrin to 2,428 for cypermethrin, and the frequencies of quantification ranged from 0% (permethrin and cyfluthrin) to 0.3% (deltamethrin) (LOQ = 0.071 ng/m³) (LCSQA, 2009). According to our exposure estimates, the population is exposed mainly to permethrin and cypermethrin and to a lesser extent to cyfluthrin and deltamethrin for all the routes. Due to the use of commercial isomer formulations, the population is more exposed to the *trans* isomer than to the *cis* one.

The predictions of the urinary metabolite concentrations by the global PBPK model using the calculated exposures are consistent with the biomonitoring data of the ENNS study (Figure 4). The results were similar between men and women. Because of the low quantification rates of *cis*-DCCA and F-PBA in the study population (56.1% and 29.8% respectively), the predicted and measured distributions were represented either without accounting for the non-quantified samples, or by assigning the LOQ value (0.1 µg/L) to these samples and setting the model predictions below the LOQ to the LOQ. For all compounds, the predicted median is always higher than the measured one (except for F-PBA when the non-quantified samples are not considered). For men, the over-prediction factor is 3.5 for *trans*-DCCA, 3.3 for *cis*-DCCA, 1.4 for DBCA, 1.9 for 3-PBA, and 1.3 for F-PBA when the non-quantified samples are considered. When they are not, these factors are respectively 2.8, 1.4, 1.2, 1.8, and 0.4. Our results showed that the predictions are close to the measurements for metabolites specific to one compound, *i.e.* DBCA (deltamethrin) and F-PBA (cyfluthrin). For 3-PBA, the difference is less than two-fold but not all the pyrethroids parents forming that metabolite are taken into account in our analysis. Indeed, we considered three parent compounds (permethrin, cypermethrin and deltamethrin) among the eight parent

compounds that can form 3-PBA. For *cis* and *trans*-DCCA, all the parent compounds are considered and the difference between predictions and measurements are slightly higher than the 3-factor (median). The predicted distributions cover a large range of values that is a result of the inter-individual variability and the uncertainty in the exposure doses and in the PBPK parameters related to the physiology and biochemistry. However, we observed that the maximal values were always under-predicted by the model by a factor ranging from 0.7 for 3-PBA (pred: 5.2 µg/L; obs: 7.8 µg/L) to 0.1 for F-PBA (pred: 1.0 µg/L; obs: 12.3 µg/L) in men. In women, the under-prediction factor ranged from 0.4 for F-PBA (pred: 1.8 µg/L; obs: 4.5 µg/L) to 0.1 for *trans*-DCCA (pred: 5.5 µg/L; obs: 60.7 µg/L). We also observed that, unlike the predicted maximal value, the measured maximal value is highly variable between men and women.

According to our assumptions on the exposure doses, we assessed the contributions of the three exposure routes to the metabolite concentrations in urine. The oral exposure is the major route as the inhalation and dermal exposures account for less than 1% of urinary concentrations. The contributions of the different pyrethroids to the urinary concentrations are presented in Figure 5 for men (similar results for women, not shown). These results are the average of the contributions calculated with the 10,000 Monte Carlo simulations. The cumulative concentrations of *cis*- and *trans*-DCCA were formed by 45% of permethrin, 33% of cypermethrin, and 22% of cyfluthrin. These contributions are quite similar to the contributions to the global intake of parent compounds that could form *cis*- or *trans*-DCCA. Indeed, permethrin represents 42% of the global intake, cypermethrin 33%, and cyfluthrin 25%. The situation is different for 3-PBA, a metabolite common to permethrin, cypermethrin and deltamethrin. The contributions to the urinary concentrations were 61% for permethrin, 26% for cypermethrin and 13% for deltamethrin whereas the contributions to the global intake were, respectively, 40%, 30% and 30%. Deltamethrin contributes more to the global intake than to the 3-PBA concentrations, whereas it is the opposite for permethrin. F-PBA is generated from the two isomers of cyfluthrin whose contributions were 72% for the *trans* isomer and 28% for the *cis* isomer. The *trans* isomer has an increased contribution to the urinary concentrations compared to the intake (60% vs. 40%).

4 Discussion

The aim of our work was to propose a global toxicokinetic human model for four widely used pyrethroids (deltamethrin, permethrin, cypermethrin, and cyfluthrin including their *cis* and *trans* isomers) and their major urinary metabolites. This global model accounts for multi-route exposures (ingestion, inhalation and dermal contact) and for cumulative exposure to pyrethroids that share common metabolites.

4.1 Construction and evaluation of the global PBPK model

The PBPK models for the parent compounds were parameterized with numerous studies employing various methods (*in vitro*, *in vivo* and *in silico*). Previous studies in rats (Tornero-Velez et al., 2012; Willemin et al., 2016) showed that the permethrin isomers (*cis* and *trans*) exhibit slightly different toxicokinetic profiles, with a rapid absorption and a longer residence time for the *cis*-permethrin compared to the *trans* isomer. We therefore chose to build specific PBPK models for the *cis* and *trans* isomers of permethrin, cypermethrin and cyfluthrin. Among the four pyrethroids parent compounds studied, the toxicokinetics of permethrin and deltamethrin were well characterized as they have been studied in animals and then extrapolated to humans (Darney et al., 2018; Godin et al., 2010; Mirfazaelian et al., 2006; Tornero-Velez et al., 2012; Willemin et al., 2016). On the contrary, the toxicokinetics of cyfluthrin and cypermethrin have not been studied *in vivo*. Their PBPK model parameters were therefore informed using *in vitro* or *in silico* studies or set to the values of the other two pyrethroids, notably for the absorption or permeability in organs. Because there were no available data for cyfluthrin and cypermethrin, we assumed that their isomers behave similarly in terms of partitioning into the tissues (predicted by QSAR) (Knaak et al., 2012) and hepatic clearances (*in vitro* experiments) (Scollon et al., 2009). The performance of the QSAR model was checked by comparing its predictions to the *in vivo* data for permethrin and deltamethrin. A factor of about 3 was observed between the experimental and calculated values (except for brain for which the difference was much higher), that is an acceptable error for QSAR predictions. Since there were no data for absorption and permeability of cyfluthrin and cypermethrin, data related to the specific isomers *cis*- and *trans*-permethrin were used for these processes. Globally, the values of the model's parameters are of the same order for all the parent

compounds. For instance, the hepatic clearances are relatively close, between 1.56 L/h/kg for *cis*-permethrin and 9.72 L/h/kg for deltamethrin, as well as the partitioning into the tissues. As a result, the toxicokinetics of the parent compounds exhibit similar profiles. Even if the pyrethroids of interest are metabolized by the same enzymes (cytochromes P450 and carboxylesterases), we did not model metabolic interactions in the global model as we used it for environmental low doses. Moreover, as observed *in vitro* in human hepatocytes for permethrin (Willemin et al., 2015), the interaction between the *cis* and *trans* isomers was assumed negligible.

Unlike the parent compounds, the one-compartment models for metabolites were exclusively parametrized with *in vivo* data, most of them being observed in controlled human volunteer exposures (Leng et al., 1997a; Leng et al., 1997b; Ratelle et al., 2015a, b; Sams and Jones, 2012; Woollen et al., 1992). In most of these studies, the parent compound was administered as a mixture of isomers and the production of metabolites was reported as the percentage of the administered dose. For common metabolites of isomers (3-PBA, and F-PBA), it was therefore not possible to distinguish the proportion of the metabolite produced by each of the isomers. In a way similar to what Tornero-Velez et al. (2012) did, we used the study of Gaughan et al. (1977) to estimate these proportions. From that study, the parts of 3-PBA produced by the *cis* and *trans* isomers of permethrin were calculated, as the animals were exposed to each isomer separately. The same ratios (*cis/trans*) were then applied to the other parent compounds after correcting by the administered isomeric ratio. This method was applied to permethrin (3-PBA), cypermethrin (3-PBA) and cyfluthrin (F-PBA). Globally, the parameters' values of the one-compartment models for metabolites are in the same range. It can be noticed that the metabolite fraction of the *trans* isomers are always higher than the *cis* ones. Regarding the results of the sensitivity analyses, the fraction of the parent compound that is transformed into a metabolite greatly affects the model predictions of urinary metabolites' concentrations. The uncertainties lying in the extrapolation of the isomer ratios to common metabolites from one compound to another could be reduced by collecting new experimental data, and this will therefore improve the quality of the model predictions.

We chose to use most of all the human data available on the toxicokinetics of the pyrethroids and metabolites of interest. This enables to derive parameter's values, especially for the metabolic fractions,

accounting for the variability between the different studies. Only one incoherence between studies was revealed, which was the toxicokinetic of 3-PBA in urine observed in the study by Woollen et al. (1992) that differs from the other studies following that metabolite (Ratelle et al., 2015a, b; Sams and Jones, 2012). Nevertheless, some information is still missing, and assumptions had to be made. The model could be easily updated to include any new data that could refine quantitatively some processes or isomer-specific data, especially for cyfluthrin and cypermethrin. Our methodology for the parameterization of the compound-specific parameters has provided good predictability of the global model. Most of the toxicokinetic data (studies other than the one used for parameterization) were reasonably simulated given uncertainties of model parametrization data and data used to evaluate the model, i.e. 65% and 89% of the model predictions fall into the 2-fold and 3-fold error interval respectively. The development of our model fulfills the key principles and best practices for characterizing and applying PBPK models in risk assessment defined by the World Health Organization (IPCS, 2010), in terms of model documentation, evaluation, and statistical analyses performed.

4.2 Prediction of the urinary concentrations in the French adult population

We tested the global model to predict the urinary concentrations of the five pyrethroids' metabolites based on the estimation of the cumulative and aggregate exposure of the French adult population to the four pyrethroids of interest. This application aimed at demonstrating that the global model together with an adequate scenario of exposure was able to reproduce biomarkers of exposure commonly measured in biomonitoring studies, here the ENNS study (Fréry et al., 2011). To derive realistic exposure doses, we followed the methodology developed for permethrin by Hermant et al. (2017) for inhalation, dermal contact and dust, and by Darney et al. (2018) for food, but selected different datasets for the food and outdoor air contamination that are more representative of the French national exposure to be in concordance with the ENNS biomonitoring data. We then selected the outdoor air measured in 12 French regions between 2001 to 2007 (LCSQA, 2009). For food contamination, Darney et al. (2018) used data obtained by the French Ministry in charge of consumption (DGCCRF, 2008), the French Ministry in charge of agriculture (DGAL) and the French Ministry in charge of Health (DGS). These analyzes have been carried out within the framework of targeted controls for nonconformities observed

previously or during reinforced controls on imports. In this work, we chose to use Total Diet Studies 2 that aimed to measure numerous chemicals in different food samples taken from the French market (ANSES, 2011). Besides the sampling scheme, the main difference between the two studies was the levels of detection of pyrethroids in the food samples that was a bit higher for the first studies but still quite low (not superior to 3% in all media). The low detection rate of the Total Diet Studies 2, that we used, was a consequence of the choice of the analytical method that had to be suitable for a large number of chemicals and was therefore not very sensitive to pyrethroids, with LOD between 3 µg/kg and 100 µg/kg. As a comparison, Melnyk et al. (2014) obtained LOD between 0.05 µg/kg and 0.8 µg/kg in a similar study on pesticides only. This low detection had an impact on our diet intake estimates as we chose to replace the non-detected concentrations by the LOD divided by 2. This also explains why the computed diet intakes are rather similar between the pyrethroids of interest, with a maximum of 0.020 µg/kg/d for permethrin and minimum of 0.012 µg/kg/d for cyfluthrin. In the end, the choice of the studies on food and air contamination has a little impact on the calculated exposure doses as the ones we obtained for permethrin are quite similar to the intermediate exposures in France calculated in the previous works (Darney et al., 2018; Hermant et al., 2017). Despite the uncertainties in the French food contamination data, our exposure estimates are close to exposures calculated in other countries, the United States (Melnyk et al., 2014), Hong Kong (Wong et al., 2014) and Spain (Quijano et al., 2016). For instance, Melnyk et al. (2014) estimated diet intakes slightly lower than our estimates, *i.e.* 0.018 vs. 0.02 µg/kg/d for permethrin, 0.0095 vs. 0.015 µg/kg/d for cypermethrin, and 0.003 vs. 0.012 µg/kg/d for cyfluthrin. All our diet estimates are also well below the admissible daily intakes from World Health Organization are between 3 and 250 µg/kg/day (respectively cyfluthrin and permethrin) for most common used pyrethroids (IPCS, 2009).

The aim of this part of the work was to provide reasonable exposure estimates to test the behavior of our global model. The calculated exposures were then used as inputs of the global model to predict the urinary concentrations of the five metabolites. Our results show that the model's predictions are in good agreement with the measured concentrations in the ENNS study (Fréry et al., 2011). At maximum, a factor of 3 was observed between the medians of the predicted and observed distributions. The maximal

observed concentrations are not well reproduced. The predictions could be improved by refining and individualizing the exposure scenarios. Indeed, pyrethroids are non-persistent compounds whose urinary concentrations are expected to greatly vary over the day according to the contact with the chemical and the time of sampling (Aylward et al., 2017). Because no such data was available, we assumed a constant exposure throughout the day, which probably does not reflect real-life (diet) exposure. Other information such as diet, presence of animals at home, proximity to growing fields or the use of insecticides at home could be useful (Dereumeaux et al., 2018).

4.3 Application in biomonitoring studies

One of the utilities of our global model will be to facilitate the interpretation of the biomarkers of exposure collected in biomonitoring studies for pyrethroids. Such a model will be an adequate tool to study the toxicokinetic of several pyrethroids and metabolites at the same time. That is an improvement of the current practices that consist in dealing with each compound separately (Cote et al., 2014; Darney et al., 2018; Tornero-Velez et al., 2012; Wei et al., 2013). We performed several analyses to test the model behavior in that specific context. For instance, we identified the model parameters that influence the most the urinary concentrations under a constant exposure. It turned out that the toxicokinetics of the parent compounds have a little impact for this exposure scenario, and that the urinary concentrations were mainly driven by the metabolic fractions, that represent the fraction of the parent metabolism that is transformed in a specific metabolite. These results depend not only on the toxicokinetics but also on the chosen exposure scenario (steady-state at constant exposure). Under a real-life exposure scenario (several short exposures over the day), some other parameters, like the urinary excretion, will probably impact the urinary metabolites' concentrations. Another interesting result of the sensitivity analyses run with the global model was the ranking of the compounds in terms of impact on the urinary concentrations. For instance, the ranking order was: permethrin > cypermethrin > cyfluthrin for DCCA and permethrin > cypermethrin > deltamethrin for 3-PBA. As we assumed that the proportion of the *trans* isomer was always higher of the *cis* one in the administered doses, that ranking is also found in the sensitivity analyses results. Similarly, the ranking of the exposure routes was possible. As already observed with the ENNS study, our results highlighted that the oral exposure was the major route of

exposure and inhalation and dermal exposure seems to be minor pathways. Overall, these results highlight the most important parameters of the model for the analysis of the metabolite urinary concentrations. The refinement of the input data for the most sensitive parameters (through additional experimental data) can support an improvement of the model prediction capabilities.

4.4 Conclusions

In conclusion, we developed a global model for pyrethroids in humans using *in vivo*, *in vitro* and *in silico* data. This model will be a useful tool to interpret biomonitoring data for pyrethroids that are urinary concentrations of their metabolites that can be common to several pyrethroids (*e.g.*, 3-PBA and DCCA). The global model combined with realistic cumulative and aggregated exposures to permethrin, cypermethrin, cyfluthrin and deltamethrin was tested for the French population. The results and the possible related analyses are promising for the application of this model in the context of biomonitoring studies and more generally in risk assessment. While this study focused on adults, the model could be easily adapted to children that are a more sensitive population in terms of exposure (Barr et al., 2010; Egeghy et al., 2011; Schulz et al., 2009) and effects (Eskenazi et al., 2018; Farag et al., 2007; Shafer et al., 2005). The PBPK model already integrates the physiological and anatomical changes due to age. Recently, several works studied the *in vitro* metabolism and the toxicokinetics of few pyrethroids in immature animals (Amaraneni et al., 2017; Kim et al., 2010; Mortuza et al., 2018; Nallani et al., 2018; Song et al., 2019).

5 Acknowledgements

We are grateful to the Nutritional Surveillance and Epidemiology Unit (USEN) which conducted the ENNS study with support from the French Institute for Public Health Surveillance (InVS) and the University of Paris 13. We also thank Cleo Tebby for proofreading the manuscript.

6 Funding

This work was supported by the French Ministry of Ecology and Sustainable Development (Program 190).

7 References

- Amaraneni, M., Pang, J., Bruckner, J.V., Muralidhara, S., Mortuza, T.B., Gullick, D., Hooshfar, S., White, C.A., Cummings, B.S., 2017. Influence of Maturation on In Vivo Tissue to Plasma Partition Coefficients for Cis- and Trans-Permethrin. *J Pharm Sci-U* 106, 2144-2151.
- Andersen, M.E., Clewell, H.J., 3rd, Frederick, C.B., 1995. Applying simulation modeling to problems in toxicology and risk assessment--a short perspective. *Toxicology and applied pharmacology* 133, 181-187.
- ANSES, 2009. INCA2 (2006–2007). Report of the Individual and the National Study on Food Consumption no. 199. Agence française de sécurité sanitaire, alimentation, environnement, travail., Maisons-Alfort: French Food Safety Agency (AFSSA).
- ANSES, 2011. Second French Total Diet Study (TDS 2). Report 2: Pesticide residues, additives, acrylamide and polycyclic aromatic hydrocarbons. French agency for food, environmental and occupational health and safety (ANSES), Maisons-Alfort, France, p. 354.
- ATSDR, 2003. Toxicological profile for pyrethrins and pyrethroids. Agency for Toxic Substances and Disease Registry, U.S. Department of Health and Human Services, p. 279.
- Aylward, L.L., Hays, S.M., Zidek, A., 2017. Variation in urinary spot sample, 24h samples, and longer-term average urinary concentrations of short-lived environmental chemicals: implications for exposure assessment and reverse dosimetry. *J Expo Sci Env Epid* 27, 582-590.
- Barr, D.B., Olsson, A.O., Wong, L.Y., Udunka, S., Baker, S.E., Whitehead, R.D., Magsumbol, M.S., Williams, B.L., Needham, L.L., 2010. Urinary concentrations of metabolites of pyrethroid insecticides in the general U.S. population: National Health and Nutrition Examination Survey 1999-2002. *Environ Health Perspect* 118, 742-748.
- Beaudouin, R., Micallef, S., Brochot, C., 2010. A stochastic whole-body physiologically based pharmacokinetic model to assess the impact of inter-individual variability on tissue dosimetry over the human lifespan. *Regul Toxicol Pharm* 57, 103-116.
- Beko, G., Weschler, C.J., Langer, S., Callesen, M., Toftum, J., Clausen, G., 2013. Children's Phthalate Intakes and Resultant Cumulative Exposures Estimated from Urine Compared with Estimates from Dust Ingestion, Inhalation and Dermal Absorption in Their Homes and Daycare Centers. *Plos One* 8.
- Blanchard, O., Glorennec, P., Mercier, F., Bonvallot, N., Chevrier, C., Ramalho, O., Mandin, C., Bot, B.L., 2014. Semivolatile organic compounds in indoor air and settled dust in 30 French dwellings. *Environmental science & technology* 48, 3959-3969.
- Bois, F.Y., 2009. GNU MCSim: Bayesian statistical inference for SBML-coded systems biology models. *Bioinformatics* 25, 1453-1454.
- Brown, R.P., Delp, M.D., Lindstedt, S.L., Rhomberg, L.R., Beliles, R.P., 1997. Physiological parameter values for physiologically based pharmacokinetic models. *Toxicol Ind Health* 13, 407-484.
- Corbel, V., N'Guessan, R., 2013. Distribution, mechanisms, impact and management of insecticide resistance in malaria vectors : a pragmatic review. Manguin Sylvie (ed), Mouchet Jean (préf) *Anopheles mosquitoes : new insights into malaria vectors*.

650 Cote, J., Bonvalot, Y., Carrier, G., Lapointe, C., Fuhr, U., Tomalik-Scharte, D., Wachall, B., Bouchard,
651 M., 2014. A Novel Toxicokinetic Modeling of Cypermethrin and Permethrin and Their Metabolites in
652 Humans for Dose Reconstruction from Biomarker Data. *Plos One* 9.

653 Crow, J.A., Borazjani, A., Potter, P.M., Ross, M.K., 2007. Hydrolysis of pyrethroids by human and rat
654 tissues: Examination of intestinal, liver and serum carboxylesterases. *Toxicology and applied*
655 *pharmacology* 221, 1-12.

656 Darney, K., Bodin, L., Bouchard, M., Cote, J., Volatier, J.L., Desvignes, V., 2018. Aggregate exposure
657 of the adult French population to pyrethroids. *Toxicology and applied pharmacology* 351, 21-31.

658 Dereumeaux, C., Saoudi, A., Gorla, S., Wagner, V., De Crouy-Chanel, P., Pecheux, M., Berat, B.,
659 Zaros, C., Guldner, L., 2018. Urinary levels of pyrethroid pesticides and determinants in pregnant
660 French women from the Elfe cohort. *Environ Int* 119, 89-99.

661 DGCCRF, 2008. Rapport 2006 sur les plans de surveillance et de contrôles des résidus de pesticides
662 dans les denrées d'origine végétale, Note d'information n°2008-101. . Direction générale de la
663 concurrence, de la consommation et de la répression des fraudes., Paris : DGCCRF ; 2008.

664 Dubois, D., Dubois, E.F., 1989. Nutrition Metabolism Classic - a Formula to Estimate the Approximate
665 Surface-Area If Height and Weight Be Known (Reprinted from *Archives Internal Medicine*, Vol 17, Pg
666 863, 1916). *Nutrition* 5, 303-311.

667 Egeghy, P.P., Hubal, E.A.C., Tulse, N.S., Melnyk, L.J., Morgan, M.K., Fortmann, R.C., Sheldon, L.S.,
668 2011. Review of Pesticide Urinary Biomarker Measurements from Selected US EPA Children's
669 Observational Exposure Studies. *Int J Env Res Pub He* 8, 1727-1754.

670 EPA, U., 2000. Assigning values to non-detected/non-quantified pesticide residues in human health
671 food exposure assessments. Office of Pesticide Programs. U.S. Environmental Protection Agency,
672 Washington, DC 20460.

673 Eskenazi, B., An, S., Rauch, S.A., Coker, E.S., Maphula, A., Obida, M., Crause, M., Kogut, K.R.,
674 Bornman, R., Chevrier, J., 2018. Prenatal Exposure to DDT and Pyrethroids for Malaria Control and
675 Child Neurodevelopment: The VHEMBE Cohort, South Africa. *Environ Health Persp* 126.

676 Farag, A.T., Goda, N.F., Shaaban, N.A., Mansee, A.H., 2007. Effects of oral exposure of synthetic
677 pyrethroid, cypermethrin on the behavior of F1-progeny in mice. *Reprod Toxicol* 23, 560-567.

678 Feo, M.L., Eljarrat, E., Barcelo, D., 2010. Determination of pyrethroid insecticides in environmental
679 samples. *Trac-Trend Anal Chem* 29, 692-705.

680 Fréry, N., Saoudi, A., Garnier, R., Zeghnoun, A., Falq, G., 2011. Exposition de la population française
681 aux substances chimiques de l'environnement. Institut de veille sanitaire, Saint-Maurice, p. 151.

682 Gaughan, L.C., Unai, T., Casida, J.E., 1977. Permethrin Metabolism in Rats. *J Agr Food Chem* 25, 9-
683 17.

684 Godin, S.J., Crow, J.A., Scollon, E.J., Hughes, M.F., DeVito, M.J., Ross, M.K., 2007. Identification of
685 rat and human cytochrome P450 isoforms and a rat serum esterase that metabolize the pyrethroid
686 insecticides deltamethrin and esfenvalerate. *Drug Metab Dispos* 35, 1664-1671.

687 Godin, S.J., DeVito, M.J., Hughes, M.F., Ross, D.G., Scollon, E.J., Starr, J.M., Setzer, R.W., Conolly,
688 R.B., Tornero-Velez, R., 2010. Physiologically Based Pharmacokinetic Modeling of Deltamethrin:
689 Development of a Rat and Human Diffusion-Limited Model. *Toxicol Sci* 115, 330-343.

690 Godin, S.J., Scollon, E.J., Hughes, M.F., Potter, P.M., DeVito, M.J., Ross, M.K., 2006. Species
691 differences in the in vitro metabolism of deltamethrin and esfenvalerate: Differential oxidative and
692 hydrolytic metabolism by humans and rats. *Drug Metab Dispos* 34, 1764-1771.

693 Gotoh, Y., Kawakami, M., Matsumoto, N., Okada, Y., 1998. Permethrin emulsion ingestion: Clinical
694 manifestations and clearance of isomers. *J Toxicol-Clin Toxic* 36, 57-61.

695 Hedges, L., Brown, S., Vardy, A., Doyle, E., Yoon, M., Osimitz, T.G., Lake, B.G., 2018. Metabolism of
696 deltamethrin and cis- and trans-permethrin by rat and human liver microsomes, liver cytosol and plasma
697 preparations. *Xenobiotica*, 1-28.

698 Hermant, M., Blanchard, O., Perouel, G., Boulanger, G., Merlo, M., Desvignes, V., 2017.
699 Environmental Exposure of the Adult French Population to Permethrin. Risk analysis : an official
700 publication of the Society for Risk Analysis.

701 Heudorf, U., Butte, W., Schulz, C., Angerer, J., 2006. Reference values for metabolites of pyrethroid
702 and organophosphorous insecticides in urine for human biomonitoring in environmental medicine. *Int J*
703 *Hyg Envir Heal* 209, 293-299.

704 ICRP, 2002. Basic Anatomical and Physiological Data for Use in Radiological Protection Reference
705 Values. International Commission on Radiological Protection, ICRP Publication 89. *Ann. ICRP* 32 (3-
706 4).

707 Iooss, B., Janon, A., Pujol, G., 2018. Global Sensitivity Analysis of Model Outputs: R package
708 "sensitivity". p. 96.

709 IPCS, 2009. Inventory of IPCS and Other WHO Pesticide Evaluations and Summary of Toxicological
710 Evaluations Performed by the Joint Meeting on Pesticide Residues (JMPR) through 2009. Tenth
711 Edition. World Health Organization, International Programme on Chemical Safety., Geneva,
712 Switzerland., p. 56.

713 IPCS, 2010. Characterization and application of physiologically based pharmacokinetic models in risk
714 assessment. World Health Organization, International Programme on Chemical Safety., Geneva,
715 Switzerland, p. 97.

716 Kim, K.B., Anand, S.S., Kim, H.J., White, C.A., Fisher, J.W., Tornero-Velez, R., Bruckner, J.V., 2010.
717 Age, Dose, and Time-Dependency of Plasma and Tissue Distribution of Deltamethrin in Immature Rats.
718 *Toxicol Sci* 115, 354-368.

719 Klepeis, N.E., Nelson, W.C., Ott, W.R., Robinson, J.P., Tsang, A.M., Switzer, P., Behar, J.V., Hern,
720 S.C., Engelmann, W.H., 2001. The National Human Activity Pattern Survey (NHAPS): a resource for
721 assessing exposure to environmental pollutants. *J Expo Anal Env Epid* 11, 231-252.

722 Knaak, J.B., Dary, C.C., Zhang, X., Gerlach, R.W., Tornero-Velez, R., Chang, D.T., Goldsmith, R.,
723 Blancato, J.N., 2012. Parameters for pyrethroid insecticide QSAR and PBPK/PD models for human risk
724 assessment. *Reviews of environmental contamination and toxicology* 219, 1-114.

725 LCSQA, 2009. Observation des niveaux de concentration en pesticides dans l'air ambiant. Laboratoire
726 Central de Surveillance de la Qualité de l'Air.

727 Leng, G., Kuhn, K.H., Idel, H., 1997a. Biological monitoring of pyrethroids in blood and pyrethroid
728 metabolites in urine: applications and limitations. *The Science of the total environment* 199, 173-181.

729 Leng, G., Leng, A., Kuhn, K.H., Lewalter, J., Pauluhn, J., 1997b. Human dose-excretion studies with
730 the pyrethroid insecticide cyfluthrin: urinary metabolite profile following inhalation. *Xenobiotica* 27,
731 1273-1283.

732 Melnyk, L.J., Xue, J.P., Brown, G.G., McCombs, M., Nishioka, M., Michael, L.C., 2014. Dietary
733 intakes of pesticides based on community duplicate diet samples. *Science of the Total Environment* 468,
734 785-790.

735 Mirfazaelian, A., Kim, K.B., Anand, S.S., Kim, H.J., Tornero-Velez, R., Bruckner, J.V., Fisher, J.W.,
736 2006. Development of a physiologically based pharmacokinetic model for deltamethrin in the adult
737 male Sprague-Dawley rat. *Toxicol Sci* 93, 432-442.

738 Morgan, M.K., 2012. Children's Exposures to Pyrethroid Insecticides at Home: A Review of Data
739 Collected in Published Exposure Measurement Studies Conducted in the United States. *Int J Env Res*
740 *Pub He* 9, 2964-2985.

741 Morris, M.D., 1991. Factorial Sampling Plans for Preliminary Computational Experiments.
742 *Technometrics* 33, 161-174.

743 Mortuza, T., Chen, C., White, C.A., Cummings, B.S., Muralidhara, S., Gullick, D., Bruckner, J.V.,
744 2018. Toxicokinetics of Deltamethrin: Dosage Dependency, Vehicle Effects, and Low-Dose Age-
745 Equivalent Dosimetry in Rats. *Toxicol Sci* 162, 327-336.

746 Nallani, G.C., Chandrasekaran, A., Kassahun, K., Shen, L., ElNaggar, S.F., Liu, Z.W., 2018. Age
747 dependent in vitro metabolism of bifenthrin in rat and human hepatic microsomes. *Toxicology and*
748 *applied pharmacology* 338, 65-72.

749 Quijano, L., Yusa, V., Font, G., Pardo, O., 2016. Chronic cumulative risk assessment of the exposure to
750 organophosphorus, carbamate and pyrethroid and pyrethrin pesticides through fruit and vegetables
751 consumption in the region of Valencia (Spain). *Food Chem Toxicol* 89, 39-46.

752 Ratelle, M., Cote, J., Bouchard, M., 2015a. Time profiles and toxicokinetic parameters of key
753 biomarkers of exposure to cypermethrin in orally exposed volunteers compared with previously
754 available kinetic data following permethrin exposure. *J Appl Toxicol* 35, 1586-1593.

755 Ratelle, M., Cote, J., Bouchard, M., 2015b. Toxicokinetics of permethrin biomarkers of exposure in
756 orally exposed volunteers. *Toxicol Lett* 232, 369-375.

757 Saltelli, A., Chan, K., Scott, E.M., 2008. *Sensitivity Analysis*. New York.

758 Sams, C., Jones, K., 2012. Biological monitoring for exposure to deltamethrin: A human oral dosing
759 study and background levels in the UK general population. *Toxicol Lett* 213, 35-38.

760 Schulz, C., Angerer, J., Ewers, U., Heudorf, U., Wilhelm, M., Agcy, G.F.E., 2009. Revised and new
761 reference values for environmental pollutants in urine or blood of children in Germany derived from the
762 German Environmental Survey on Children 2003-2006 (GerES IV). *Int J Hyg Envir Heal* 212, 637-647.

763 Scollon, E.J., Starr, J.M., Godin, S.J., DeVito, M.J., Hughes, M.F., 2009. In Vitro Metabolism of
764 Pyrethroid Pesticides by Rat and Human Hepatic Microsomes and Cytochrome P450 Isoforms. *Drug*
765 *Metab Dispo* 37, 221-228.

766 Shafer, T.J., Meyer, D.A., Crofton, K.M., 2005. Developmental neurotoxicity of pyrethroid insecticides:
767 Critical review and future research needs. *Environ Health Persp* 113, 123-136.

768 Shi, S.S., Zhao, B., 2014. Modeled Exposure Assessment via Inhalation and Dermal Pathways to
769 Airborne Semivolatile Organic Compounds (SVOCs) in Residences. *Environmental science &*
770 *technology* 48, 5691-5699.

771 Sobol, I.M., Tarantola, S., Gatelli, D., Kucherenko, S.S., Mauntz, W., 2007. Estimating the
 772 approximation errors when fixing unessential factors in global sensitivity analysis. *Reliability*
 773 *Engineering & System Safety* 92, 957-960.

774 Song, G., Moreau, M., Efremenko, A., Lake, B.G., Wu, H., Bruckner, J.V., White, C.A., Osimitz, T.G.,
 775 Creek, M.R., Hinderliter, P.M., Clewell, H.J., Yoon, M., 2019. Evaluation of Age-related Pyrethroid
 776 Pharmacokinetic Differences in Rats: Physiologically-based Pharmacokinetic Model Development
 777 using In Vitro Data and In Vitro to In Vivo Extrapolation. *Toxicol Sci*.

778 Starr, J., Graham, S., Li, D.S., Andrews, K., Nishioka, M., 2008. Pyrethroid pesticides and their
 779 metabolites in vacuum cleaner dust collected from homes and day-care centers. *Environ Res* 108, 271-
 780 279.

781 Tomalik-Scharte, D., Lazar, A., Meins, J., Bastian, B., Ihrig, M., Wachall, B., Jetter, A., Tantcheva-
 782 Poor, I., Mahrle, G., Fuhr, U., 2005. Dermal absorption of permethrin following topical administration.
 783 *European Journal of Clinical Pharmacology* 61, 399-404.

784 Tornero-Velez, R., Davis, J., Scollon, E.J., Starr, J.M., Setzer, R.W., Goldsmith, M.R., Chang, D.T.,
 785 Xue, J.P., Zartarian, V., DeVito, M.J., Hughes, M.F., 2012. A Pharmacokinetic Model of cis- and trans-
 786 Permethrin Disposition in Rats and Humans With Aggregate Exposure Application. *Toxicol Sci* 130,
 787 33-47.

788 Ueyama, J., Saito, I., Kamijima, M., 2010. Analysis and evaluation of pyrethroid exposure in human
 789 population based on biological monitoring of urinary pyrethroid metabolites. *J Pestic Sci* 35, 87-98.

790 Wei, B.N.A., Isukapalli, S.S., Weisel, C.P., 2013. Studying permethrin exposure in flight attendants
 791 using a physiologically based pharmacokinetic model. *J Expo Sci Env Epid* 23, 416-427.

792 Weschler, C.J., Nazaroff, W.W., 2008. Semivolatile organic compounds in indoor environments. *Atmos*
 793 *Environ* 42, 9018-9040.

794 Willemin, M.E., Kadar, A., de Sousa, G., Leclerc, E., Rahmani, R., Brochot, C., 2015. In vitro human
 795 metabolism of permethrin isomers alone or as a mixture and the formation of the major metabolites in
 796 cryopreserved primary hepatocytes. *Toxicology in Vitro* 29, 803-812.

797 Willemin, M.E., Sophie, D.C., Le Grand, R., Lestremay, F., Zeman, F.A., Leclerc, E., Moesch, C.,
 798 Brochot, C., 2016. PBPK modeling of the cis- and trans-permethrin isomers and their major urinary
 799 metabolites in rats. *Toxicology and applied pharmacology* 294, 65-77.

800 Williams, M.K., Rundle, A., Holmes, D., Reyes, M., Hoepner, L.A., Barr, D.B., Camann, D.E., Perera,
 801 F.P., Whyatt, R.M., 2008. Changes in Pest Infestation Levels, Self-Reported Pesticide Use, and
 802 Permethrin Exposure during Pregnancy after the 2000-2001 US Environmental Protection Agency
 803 Restriction of Organophosphates. *Environ Health Persp* 116, 1681-1688.

804 Wong, W.W., Yau, A.T., Chung, S.W., Lam, C.H., Ma, S., Ho, Y.Y., Xiao, Y., 2014. Dietary exposure
 805 of Hong Kong adults to pesticide residues: results of the first Hong Kong Total Diet Study. *Food*
 806 *additives & contaminants Part A, Chemistry, analysis, control, exposure & risk assessment* 31, 852-871.

807 Woollen, B.H., Marsh, J.R., Laird, W.J., Lesser, J.E., 1992. The metabolism of cypermethrin in man:
 808 differences in urinary metabolite profiles following oral and dermal administration. *Xenobiotica* 22,
 809 983-991.

810 Xue, J.P., Zartarian, V., Tornero-Velez, R., Tulse, N.S., 2014. EPA's SHEDS-multimedia model:
 811 Children's cumulative pyrethroid exposure estimates and evaluation against NHANES biomarker data.
 812 *Environ Int* 73, 304-311.

8 List of figures

Figure 1. The global PBPK model for a pyrethroid and the urinary metabolites F-PBA, DBCA, 3-PBA and *cis*- and *trans*-DCCA.

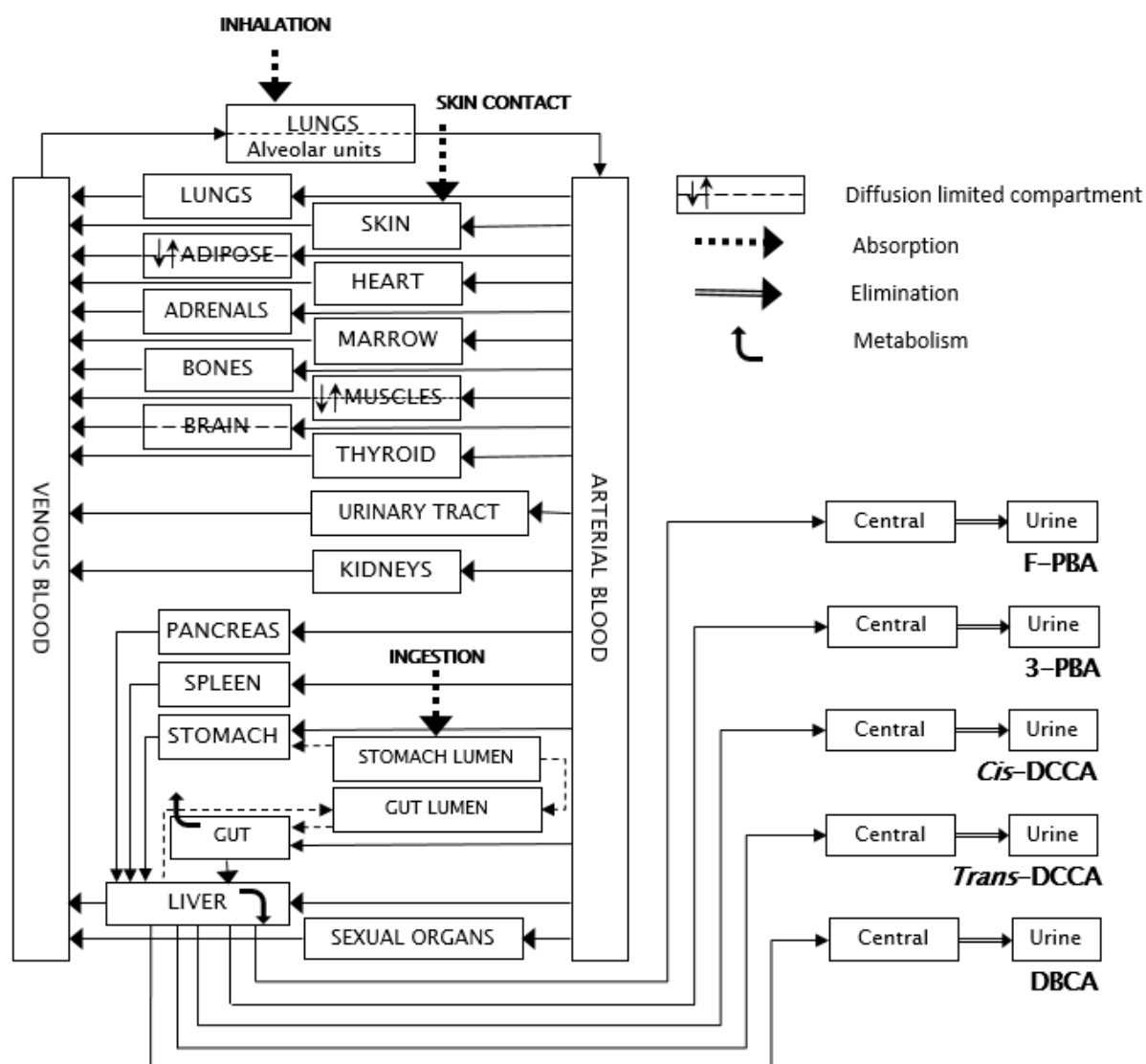
Figure 2. Comparison of the model predictions with experimental data obtained in humans after oral, dermal or inhalation exposure to one pyrethroid (Gotoh et al., 1998; Leng et al., 1997a; Leng et al., 1997b; Ratelle et al., 2015a, b; Sams and Jones, 2012; Tomalik-Scharte et al., 2005; Woollen et al., 1992). The five metabolites are represented (3-PBA, F-PBA, *cis*-DCCA, *trans*-DCCA, DBCA) and *trans*- and *cis*-permethrin. The plain line is the perfect correspondence between the predictions and the experimental data. The dashed lines represent the 5-fold error interval, and the dotted lines the 10-fold error interval.

Figure 3. First-order (light grey) and Total (dark grey) Sobol sensitivity indices for urinary concentrations of *cis*-DCCA, *trans*-DCCA, 3-PBA, F-PBA and DBCA following exposure to *cis*- and *trans*-permethrin, *cis*- and *trans*-cypermethrin, *cis*- and *trans*-cyfluthrin and deltamethrin.

Figure 4. Predictions of urinary concentrations after cumulative exposures to pyrethroids: comparison of simulated (white boxplot) and measured (grey boxplot) of urinary concentration of *cis*-DCCA, *trans*-DCCA, 3-PBA, F-PBA and DBCA for men and women. The black plain line is the limit of quantification (0.1 µg/L), and the dotted line the limit of detection (0.03 µg/L). The percentage of quantification of urinary metabolites were 98.5% for 3-PBA, 56.1% for *cis*-DCCA, 86.1% for *trans*-DCCA, 29.8% for F-PBA and 83.1% for DBCA. The left panels present the distributions of the measured metabolite concentrations without the non-quantified samples, whereas in the right panels the predicted and measured distributions were truncated to the LOQ, i.e. the LOQ was assigned to the measured and predicted concentrations that were below the LOQ.

Figure 5. Contributions of parent compounds to the urinary metabolite concentrations predicted by the global model following the oral, dermal and inhalation exposures calculated for the French population. The results are the average of 10,000 Monte Carlo simulations. DLM stands for deltamethrin, CYF for cyfluthrin, CYP for cypermethrin, and PM for permethrin.

839

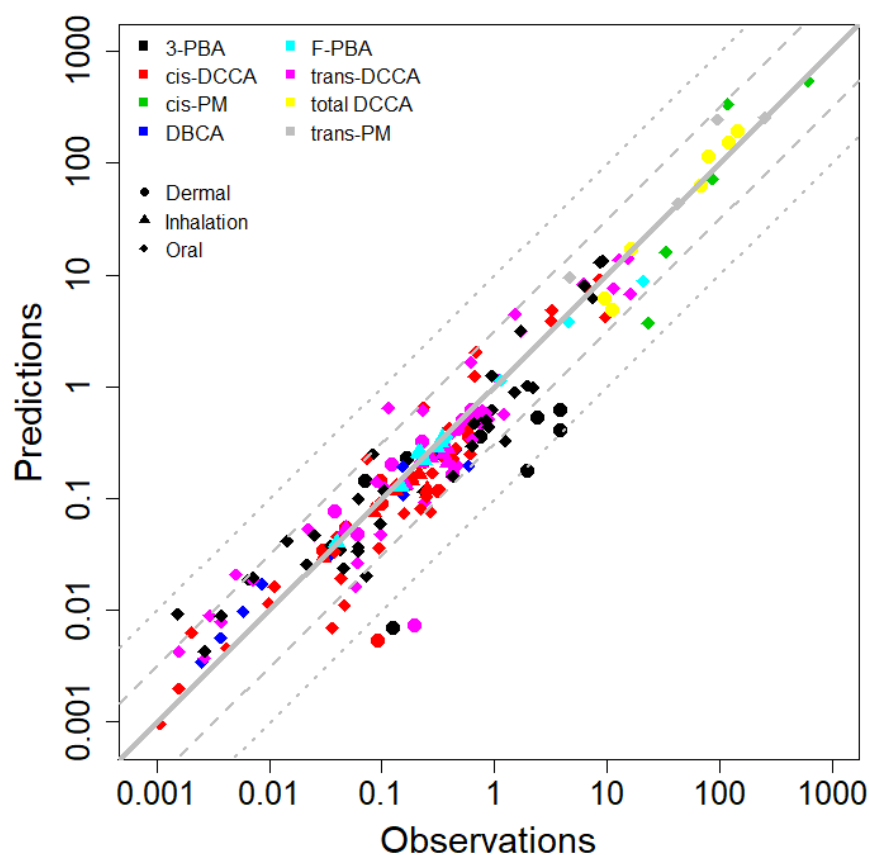


840

841 **Figure 1. The global PBPK model for a pyrethroid and the urinary metabolites F-PBA, DBCA, 3-**
 842 **PBA and *cis*- and *trans*-DCCA.**

843

844

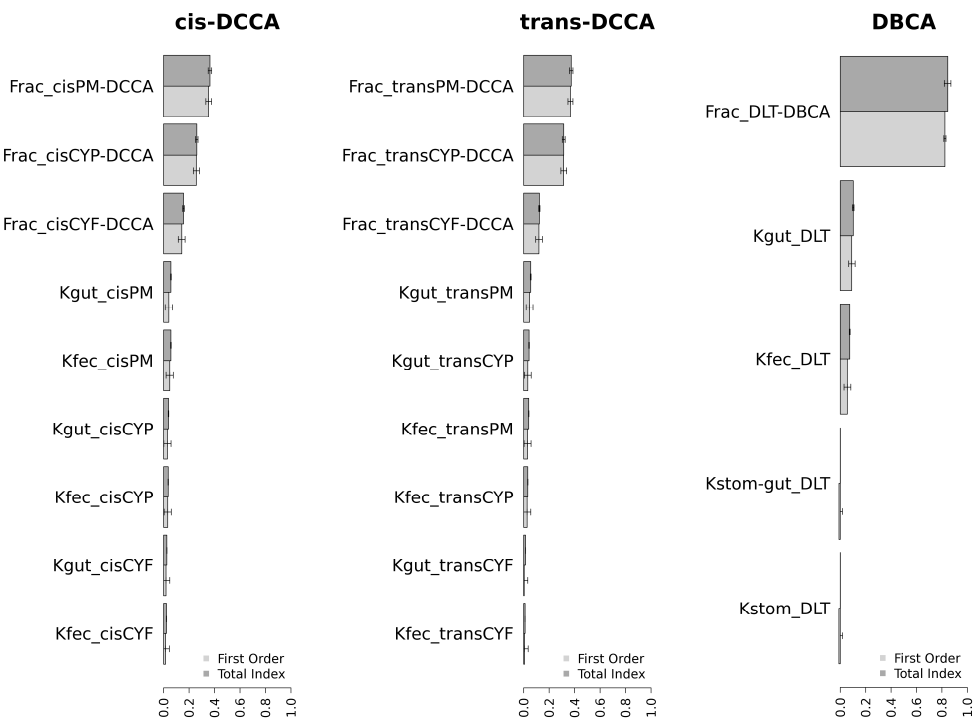


846

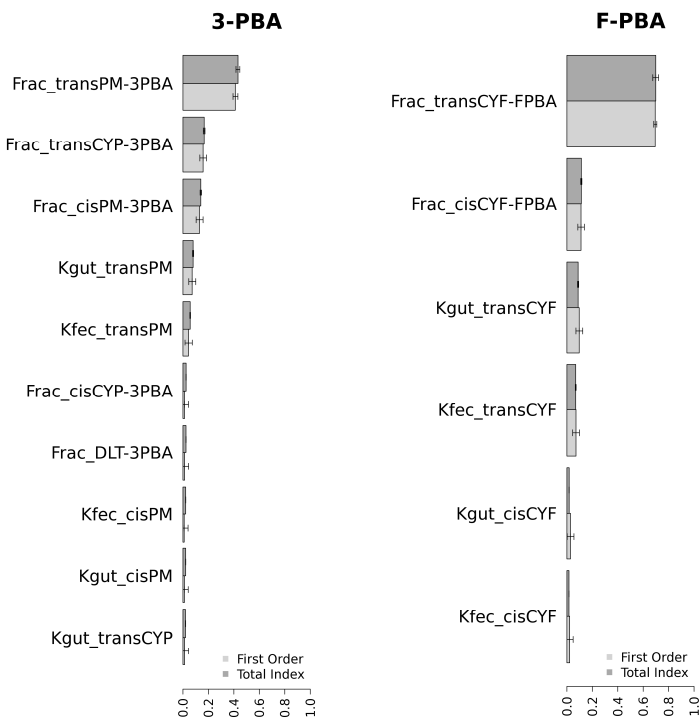
847 **Figure 2.** Comparison of the model predictions with experimental data obtained in humans after
 848 oral, dermal or inhalation exposure to one pyrethroid (Gotoh et al., 1998; Leng et al., 1997a; Leng
 849 et al., 1997b; Ratelle et al., 2015a, b; Sams and Jones, 2012; Tomalik-Scharte et al., 2005; Woollen
 850 et al., 1992). The five metabolites are represented (3-PBA, F-PBA, *cis*-DCCA, *trans*-DCCA,
 851 DBCA) and *trans*- and *cis*-permethrin. The plain line is the perfect correspondence between the
 852 predictions and the experimental data. The dashed lines represent the 5-fold error interval, and
 853 the dotted lines the 10-fold error interval.

854

855



856



857

858

859

860

861

Figure 3. First-order (light grey) and Total (dark grey) Sobol sensitivity indices for urinary concentrations of cis-DCCA, trans-DCCA, 3-PBA, F-PBA and DBCA following exposure to cis- and trans-permethrin, cis- and trans-cypermethrin, cis- and trans-cyfluthrin and deltamethrin.

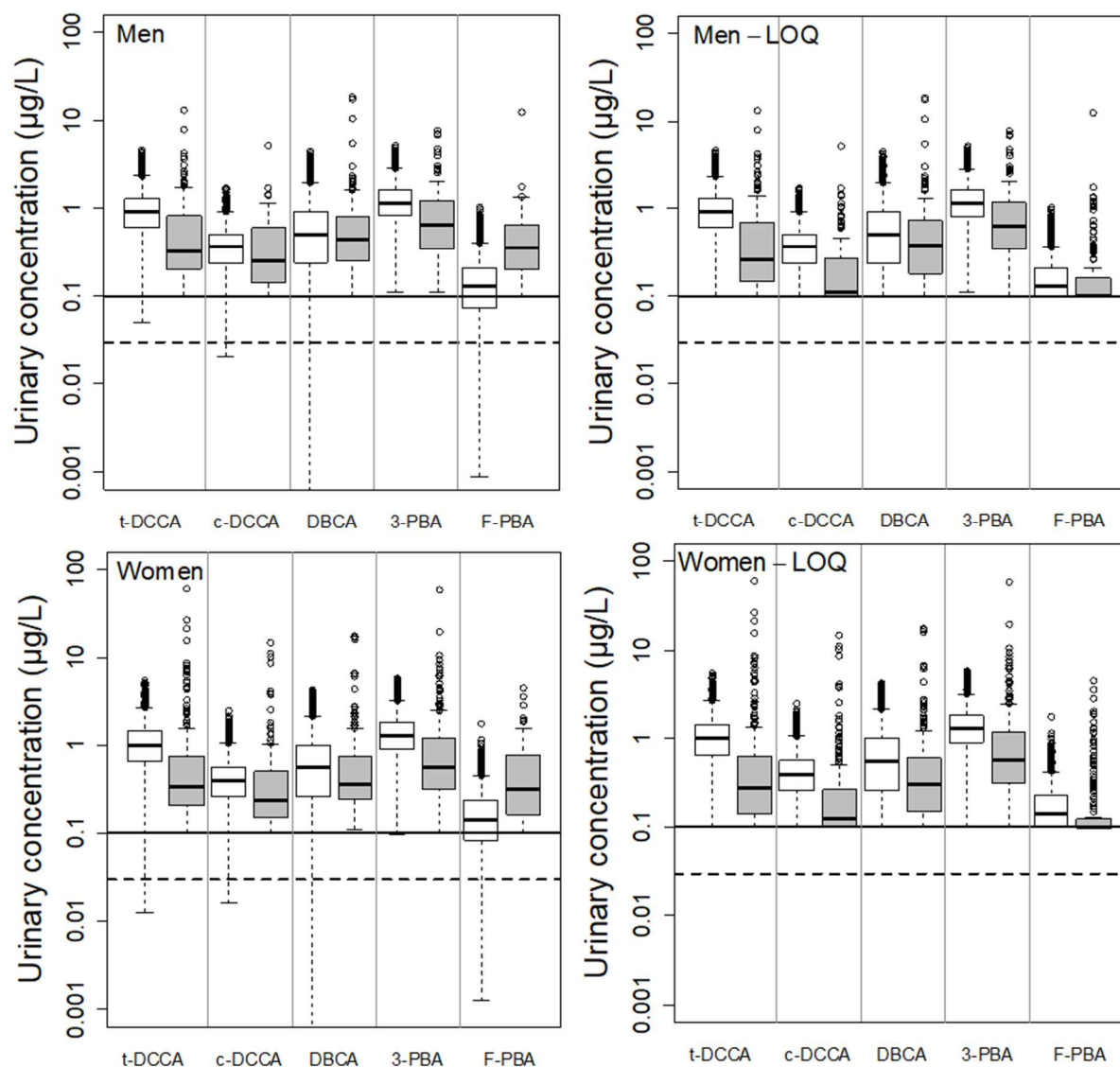


Figure 4 Predictions of urinary concentrations after cumulative exposures to pyrethroids: comparison of simulated (white boxplot) and measured (grey boxplot) of urinary concentration of *cis*-DCCA, *trans*-DCCA, 3-PBA, F-PBA and DBCA for men and women. The black plain line is the limit of quantification (0.1 µg/L), and the dotted line the limit of detection (0.03 µg/L). The percentage of quantification of urinary metabolites were 98.5% for 3-PBA, 56.1% for *cis*-DCCA, 86.1% for *trans*-DCCA, 29.8% for F-PBA and 83.1% for DBCA. The left panels present the distributions of the measured metabolite concentrations without the non-quantified samples, whereas in the right panels the predicted and measured distributions were truncated to the LOQ, i.e. the LOQ was assigned to the measured and predicted concentrations that were below the LOQ.

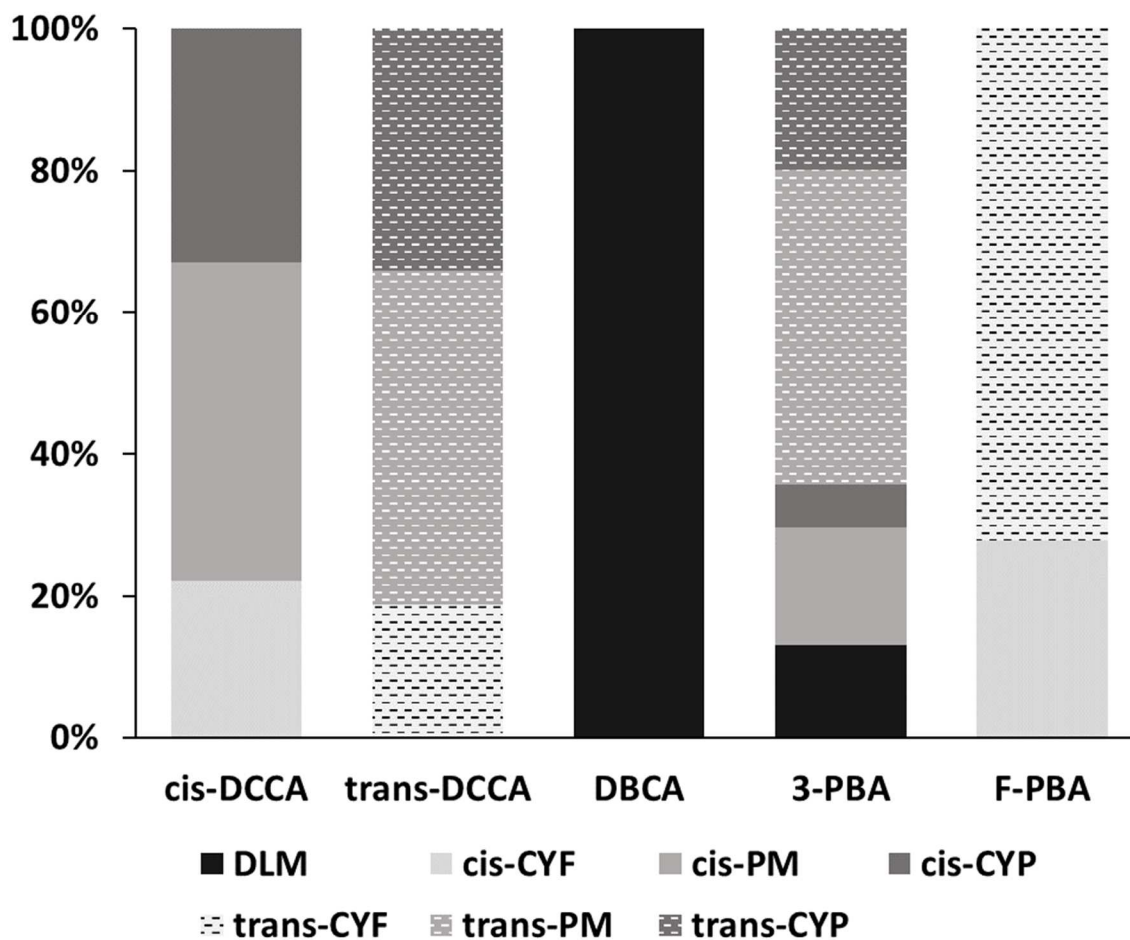


Figure 5. Contributions of parent compounds to the urinary metabolite concentrations predicted by the global model following the oral, dermal and inhalation exposures calculated for the French population. The results are the average of 10,000 Monte Carlo simulations. DLM stands for deltamethrin, CYF for cyfluthrin, CYP for cypermethrin, and PM for permethrin.

9 List of tables

Table 1. Pyrethroid compounds and their urinary metabolites

Table 2. Parameter values of the PBPK model for the seven pyrethroids and isomers.

Table 3. Parameter values for the metabolites' one-compartment models. The references for the urinary excretion rates are given in Supplementary Data.

Table 4. *In vivo* studies with different exposures to pyrethroids conducted in humans.

Table 5. Toxicokinetic parameters calculated from the *in vivo* studies with different exposures to pyrethroids conducted in humans. The predictions correspond to the mean and the 95% interval of confidence of 10,000 Monte Carlo simulations.

Table 6. Calculated exposures of the French adult population to pyrethroids by the three routes of exposure, *i.e.* ingestion, inhalation and dermal contact. The results are represented by the average value \pm SD.

893 **Table 1. Pyrethroid compounds and their urinary metabolites.**

Parent compounds	Metabolites
<i>cis</i> -permethrin	<i>cis</i> -DCCA, 3-PBA
<i>trans</i> -permethrin	<i>trans</i> -DCCA, 3-PBA
<i>cis</i> -cypermethrin	<i>cis</i> -DCCA, 3-PBA
<i>trans</i> -cypermethrin	<i>trans</i> -DCCA, 3-PBA
<i>cis</i> -cyfluthrin	<i>cis</i> -DCCA, F-PBA
<i>trans</i> -cyfluthrin	<i>trans</i> -DCCA, F-PBA
deltamethrin	DBCA, 3-PBA

894 DCCA: 3-(2,2-dichlorovinyl); 3-PBA: 3-phenoxybenzoic acid; F-PBA: 4-fluoro-3-phenoxybenzoic acid; DBCA: *cis*-3-(2,2-dibromovinyl)-2,2-

895 dimethylcyclopropane carboxylic acid

896

Table 2. Parameter values of the PBPK model for the seven pyrethroids and isomers.

Parameters	<i>cis</i> -CYF	<i>trans</i> -CYF	<i>cis</i> -CYP	<i>trans</i> -CYP	<i>cis</i> -PM	<i>trans</i> -PM	DLT
Absorption and excretion rates (h⁻¹)							
Absorption from stomach	0.01 ^c	0.01 ^c	0.01 ^c	0.01 ^c	0.01 ^c	0.01 ^c	0.01 ^c
Absorption from Gut	0.52 ^b	1.30 ^b	0.52 ^b	1.30 ^b	0.52 ^b	1.30 ^b	1.51 ^g
Stomach-gut transfer	0.35 ^b	0.20 ^b	0.35 ^b	0.20 ^b	0.35 ^b	0.20 ^b	0.42 ^g
Fecal excretion rate	0.39 ^b	0.85 ^b	0.39 ^b	0.85 ^b	0.39 ^b	0.85 ^b	0.59 ^g
Surface-SC transfer ^e	0.0025	0.0025	0.0025	0.0025	0.0025	0.0025	0.0025
SC-venous blood transfer ^e	0.25	0.25	0.25	0.25	0.25	0.25	0.25
Tissue:Blood partition coefficients							
Adipose	31.31 ^a	31.31 ^a	31.11 ^a	31.11 ^a	225.00 ^b	76.00 ^b	75.00 ^g
Adrenal	2.17 ^a	2.17 ^a	1.92 ^a	1.92 ^a	1.10 ^b	0.21 ^b	8.10 ^g
Bone	2.17 ^a	2.17 ^a	8.68 ^a	8.68 ^a	1.10 ^b	0.21 ^b	8.10 ^g
Brain	8.94 ^a	8.94 ^a	7.94 ^a	7.94 ^a	1.60 ^b	0.57 ^b	0.14 ^g
Breast	2.17 ^a	2.17 ^a	1.92 ^a	1.92 ^a	1.10 ^b	0.21 ^b	8.10 ^g
Heart	2.17 ^a	2.17 ^a	1.92 ^a	1.92 ^a	1.10 ^b	0.21 ^b	8.10 ^g
Marrow	2.17 ^a	2.17 ^a	1.92 ^a	1.92 ^a	1.10 ^b	0.21 ^b	8.10 ^g
Muscle	3.42 ^a	3.42 ^a	3.03 ^a	3.03 ^a	1.20 ^b	0.82 ^b	5.64 ^g
Sexual organs	2.17 ^a	2.17 ^a	1.92 ^a	1.92 ^a	0.63 ^b	0.21 ^b	8.10 ^g
Pancreas	2.17 ^a	2.17 ^a	1.92 ^a	1.92 ^a	1.10 ^b	0.21 ^b	8.10 ^g
Skin	4.18 ^a	4.18 ^a	3.71 ^a	3.71 ^a	19.00 ^b	8.40 ^b	8.10 ^g
Spleen	2.17 ^a	2.17 ^a	3.04 ^a	3.04 ^a	1.10 ^b	0.21 ^b	8.10 ^g
Thyroid	2.17 ^a	2.17 ^a	1.92 ^a	1.92 ^a	1.10 ^b	0.21 ^b	8.10 ^g
Urinary tract	2.17 ^a	2.17 ^a	1.92 ^a	1.92 ^a	1.10 ^b	0.21 ^b	8.10 ^g
Kidney	3.36 ^a	3.36 ^a	2.99 ^a	2.99 ^a	1.10 ^b	0.21 ^b	8.10 ^g
Lung	2.17 ^a	2.17 ^a	0.67 ^a	0.67 ^a	1.10 ^b	0.21 ^b	8.10 ^g
Gut	2.17 ^a	2.17 ^a	6.26 ^a	6.26 ^a	1.10 ^b	0.21 ^b	8.10 ^g
Stomach	2.17 ^a	2.17 ^a	1.92 ^a	1.92 ^a	1.10 ^b	0.21 ^b	8.10 ^g
Liver	5.57 ^a	5.57 ^a	4.95 ^a	4.95 ^a	0.89 ^b	0.89 ^{*b}	19.0 ^g
Permeability coefficients (L/h)							
Adipose	0.048 ^b	0.11 ^b	0.048 ^b	0.11 ^b	0.048 ^b	0.11 ^b	0.025 ^g
Brain	0.001 ^b	0.0012 ^b	0.001 ^b	0.0012 ^b	0.001 ^b	0.0012 ^b	0.002 ^g
Muscle	0.32 ^b	0.48 ^b	0.32 ^b	0.48 ^b	0.32 ^b	0.48 ^b	0.043 ^g
Metabolic clearance (L/h/kg BDW)							
Intestinal	-	-	-	-	0.00 ^e	0.78 ^e	-
Liver	5.34 ^f	5.34 ^f	6.24 ^f	6.24 ^f	1.56 ^d	3.97 ^d	9.72 ^h

898 ^aKnaak *et al.* (2012) ; ^bWillemin *et al.* (2016) ; ^cMirfazaelian *et al.* (2006) ; ^dWillemin *et al.* (2015) ;

899 ^eTornero-Velez *et al.* (2012) ^fScollon *et al.* (2009) ^gGodin *et al.* (2010); ^hGodin *et al.* (2006); ^{*}equal to

900 the *cis* isomer (not determined *in vivo*)

901

Table 3. Parameter values for the metabolite one-compartment models. The references for the urinary excretion rates are given in Supplementary Data.

Parameters	Cis-DCCA	Trans-DCCA	DBCA	3-PBA	F-PBA
Metabolite fractions ($F_{raCPYRioMET}$)					
<i>trans</i> -Permethrin	-	0.61 ^a	-	0.85 ^a	-
<i>cis</i> -Permethrin	0.37 ^a	-	-	0.37 ^a	-
<i>trans</i> -Cypermethrin	-	0.57 ^{b,c}	-	0.39 ^{b,c}	-
<i>cis</i> -Cypermethrin	0.32 ^{b, f}	-	-	0.16 ^{b, f}	-
<i>trans</i> -Cyfluthrin	-	0.35 ^d	-	-	0.23 ^d
<i>cis</i> -Cyfluthrin	0.27 ^d	-	-	-	0.10 ^d
Deltamethrin	-	-	0.73 ^e	0.15 ^e	-
Urinary excretion rates (K_{uri_X} , h ⁻¹)	0.107	0.107	0.192	0.093	0.137

^aRatelle et al. (2015b); ^bRatelle et al. (2015a); ^cWoollen et al. (1992); ^dLeng et al. (1997b); ^eSams and Jones (2012)

907 **Table 4. *In vivo* studies with different exposures to pyrethroids conducted in humans.**

Study	Molecule	Route	Dose	Data collected
(Gotoh et al., 1998)	Permethrin	Oral	630 mg (poisoning)	Permethrin in blood
(Ratelle et al., 2015b)	Permethrin	Oral	0.1 mg/kg	<i>cis</i> - and <i>trans</i> -DCCA, and 3-PBA in urine
(Woollen et al., 1992)	Cypermethrin	Oral	3.3 mg	<i>cis</i> - and <i>trans</i> -DCCA, and 3-PBA in urine
(Ratelle et al., 2015a)	Cypermethrin	Oral	0.1 mg/kg	<i>cis</i> - and <i>trans</i> -DCCA, and 3-PBA in urine
(Leng et al., 1997a)	Cyfluthrin	Oral	0.03 mg/kg	<i>cis</i> - and <i>trans</i> -DCCA, and F-PBA in urine
(Sams and Jones, 2012)	Deltamethrin	Oral	0.01 mg/kg	DBCA and 3-PBA in urine
(Tomalik-Scharte et al., 2005)	Permethrin	Dermal	3 g for 12 hours	Total DCCA in urine
(Woollen et al., 1992)	Cypermethrin	Dermal	31 mg for 8 hours	<i>cis</i> - and <i>trans</i> -DCCA, and 3-PBA in urine
(Leng et al., 1997b)	Cyfluthrin	Inhalation	160 µg/m ³ for 30 min	<i>cis</i> - and <i>trans</i> -DCCA, and F-PBA in urine

908

909

Table 5. Toxicokinetic parameters calculated from the *in vivo* studies with different exposures to pyrethroids conducted in humans. The predictions correspond to the mean and the 95% interval of confidence of 10,000 Monte Carlo simulations.

	Maximum peak concentration or excretion rate		Time-to-peak levels (h)		Elimination half-life (h)	
	Obs	Predictions	Obs	Predictions	Obs	Predictions
Permethrin oral						
Study by Gotoh et al. (1998) – blood concentration (mg/L)						
<i>cis</i> -PM	0.61	0.64 [0.21 – 1.64]	3	2.3 [1.7 – 3.5]	5.0	3.4 [2.1 – 6.5]
<i>trans</i> -PM	0.25	0.32 [0.10 – 0.86]	3	1.7 [1.2 – 2.5]	3.7	4.6 [2.6 – 9.2]
Study by Ratelle et al. (2015b) – urinary concentration (mg/L)						
<i>cis</i> -DCCA	0.61	0.29 [0.09 – 0.57]	[3 – 6]	7.3 [5.2 – 11.0]	6.2	7.8 [4.4 – 16.2]
<i>trans</i> -DCCA	1.22	0.66 [0.21 – 1.26]	[3 – 6]	8.1 [5.7 – 13.0]	6.5	8.0 [4.7 – 16.3]
3-PBA	2.20	1.04 [0.44 – 1.75]	[9 – 12]	8.1 [6.0 – 12.0]	6.7	8.9 [5.1 – 18.3]
Permethrin dermal						
Study by Tomalik-Scharte et al. (2005) – excretion rate (mg/h)						
Total DCCA	0.14	0.20 [0.06 – 0.41]	[18 – 24]	24.0 [19.5 – 32.0]	22.4	19.8 [11.1 – 40.9]
Cypermethrin oral						
Study by Woollen et al. (1992) – excretion rate (µg/h)						
<i>cis</i> -DCCA	9.8	9.3 [2.6 – 18.8]	[0 – 4]	6.7 [4.8 – 10.2]	7.6	8.4 [4.6 – 17.6]
<i>trans</i> -DCCA	16.2	14.7 [4.7 – 28.0]	[0 – 4]	8.1 [5.7 – 12.8]	8.8	10.3 [5.7 – 18.4]
3-PBA	9.3	13.9 [5.6 – 24.5]	[4 – 8]	7.8 [5.8 – 11.3]	9.4	11.1 [6.2 – 20.9]
Study by Ratelle et al. (2015a) – urinary concentration (mg/L)						
<i>cis</i> -DCCA	0.43	0.25 [0.07 – 0.51]	[3 – 6]	6.7 [4.8 – 10.0]	6.7	7.6 [4.1 – 16.4]
<i>trans</i> -DCCA	0.89	0.60 [0.19 – 1.13]	[3 – 6]	8.1 [5.7 – 13.0]	6.4	8.0 [4.6 – 16.5]
3-PBA	0.71	0.50 [0.20 – 0.91]	[12 – 24]	7.9 [5.8 – 12.0]	6.9	8.9 [5.1 – 18.1]
Cypermethrin dermal						
Study by Woollen et al. (1992) – excretion rate (µg/h)						
<i>cis</i> -DCCA	0.60	0.23 [0.05 – 0.50]	[24 – 36]	20.0 [15.2 – 30.0]	13.9	17.5 [10.0 – 37.2]
<i>trans</i> -DCCA	0.63	0.32 [0.08 – 0.68]	[12 – 24]	20.0 [15.3 – 30.0]	15.4	17.6 [10.0 – 37.2]
3-PBA	3.84	0.33 [0.10 – 0.68]	[12 – 24]	21.0 [15.8 – 31.0]	7.9	18.1 [10.3 – 37.6]
Cyfluthrin inhalation						
Study by Leng et al. (1997b) – excretion rate (µg/h)						
<i>cis</i> -DCCA	0.25	0.16 [0.05 – 0.31]	[0 – 1]	1.1 [0.7 – 2.0]	6.9	7.5 [4.1 – 15.8]
<i>trans</i> -DCCA	0.38	0.29 [0.08 – 0.55]	[0 – 1]	1.1 [0.7 – 2.0]	6.2	7.5 [4.2 – 15.6]
F-PBA	0.35	0.34 [0.12 – 0.61]	[1 – 2]	0.9 [0.5 – 1.7]	5.3	5.9 [3.3 – 12.1]
Cyfluthrin oral						
Study by Leng et al. (1997a) – excretion rate (µg/h)						
<i>cis</i> -DCCA	3.3	5.0 [1.5 – 10.0]	[0 – 12]	6.6 [4.8 – 10.0]	6.7	8.3 [4.6 – 17.1]
<i>trans</i> -DCCA	11.4	7.9 [2.2 – 15.4]	[0 – 12]	8.0 [5.5 – 12.8]	6.6	10.3 [5.7 – 18.1]
F-PBA	21.1	8.9 [3.5 – 15.9]	[0 – 12]	6.7 [5.0 – 9.8]	6.2	8.2 [4.6 – 16.5]
Deltamethrin oral (µg/L)						
Study by (Sams and Jones (2012)) – urinary concentration (mg/L)						
DBCA	0.59	0.28 [0.09 – 0.51]	[0 – 2]	4.5 [3.2 – 6.8]	4.0	4.7 [2.6 – 9.8]
3-PBA	0.06	0.04 [0.01 – 0.07]	[2 – 4]	5.7 [4.0 – 9.0]	8.3	8.9 [5.0 – 18.2]

915 **Table 6. Calculated exposures of the French adult population to pyrethroids by the three routes of exposure, *i.e.***
916 **ingestion, inhalation and dermal contact. The results are represented by the average value \pm SD.**

Compound	Oral ($\mu\text{g/kg/d}$)	Inhalation ($\mu\text{g/m}^3$)	Dermal ($\mu\text{g/d}$)
Permethrin			
total	0.020 ± 0.100	$7.3 \times 10^{-5} \pm 3.7 \times 10^{-4}$	0.486 ± 2.430
<i>cis</i> isomer	0.008 ± 0.040	$2.9 \times 10^{-5} \pm 1.5 \times 10^{-4}$	0.194 ± 0.970
<i>trans</i> isomer	0.012 ± 0.060	$4.4 \times 10^{-5} \pm 2.2 \times 10^{-4}$	0.292 ± 1.460
Cypermethrin			
total	0.015 ± 0.075	$1.9 \times 10^{-5} \pm 9.5 \times 10^{-5}$	0.093 ± 0.465
<i>cis</i> isomer	0.006 ± 0.030	$0.8 \times 10^{-5} \pm 4.0 \times 10^{-5}$	0.039 ± 0.195
<i>trans</i> isomer	0.009 ± 0.045	$1.1 \times 10^{-5} \pm 5.5 \times 10^{-5}$	0.054 ± 0.270
Cyfluthrin			
total	0.012 ± 0.060	$6.0 \times 10^{-6} \pm 3.0 \times 10^{-5}$	0.029 ± 0.145
<i>cis</i> isomer	0.005 ± 0.025	$2.0 \times 10^{-6} \pm 1.0 \times 10^{-5}$	0.012 ± 0.060
<i>trans</i> isomer	0.007 ± 0.035	$4.0 \times 10^{-6} \pm 2.0 \times 10^{-5}$	0.017 ± 0.085
Deltamethrin	0.015 ± 0.075	$7.0 \times 10^{-6} \pm 3.5 \times 10^{-5}$	0.029 ± 0.145

917

918