



**HAL**  
open science

## Resolving source mechanisms of microseismic swarms induced by solution mining

Jannes Kinscher, Simone Cesca, Pascal Bernard, Isabelle Contrucci, Anne Mangeney, Jack-Pierre Pigué, Pascal Bigarre

► **To cite this version:**

Jannes Kinscher, Simone Cesca, Pascal Bernard, Isabelle Contrucci, Anne Mangeney, et al.. Resolving source mechanisms of microseismic swarms induced by solution mining. *Geophysical Journal International*, 2016, 206 (1), pp.696-715. 10.1093/gji/ggw163 . ineris-01863835

**HAL Id: ineris-01863835**

**<https://ineris.hal.science/ineris-01863835>**

Submitted on 29 Aug 2018

**HAL** is a multi-disciplinary open access archive for the deposit and dissemination of scientific research documents, whether they are published or not. The documents may come from teaching and research institutions in France or abroad, or from public or private research centers.

L'archive ouverte pluridisciplinaire **HAL**, est destinée au dépôt et à la diffusion de documents scientifiques de niveau recherche, publiés ou non, émanant des établissements d'enseignement et de recherche français ou étrangers, des laboratoires publics ou privés.

**Resolving source mechanisms of microseismic swarms induced by solution mining**

J. Kinscher<sup>1\*</sup>, S. Cesca<sup>2</sup>, P. Bernard<sup>3</sup>, I. Contrucci<sup>1</sup>, A. Mangeney<sup>3,4</sup>, J.P. Piguet<sup>5</sup>, and P. Bigarré<sup>1</sup>

<sup>1</sup> L'Institut National de l'Environnement Industriel et des Risques INERIS, Nancy, France

<sup>2</sup> GFZ German Research Centre for Geosciences, Potsdam, Germany

<sup>3</sup> Institut de Physique du Globe de Paris IPGP, Sorbonne Paris Cité, UMR 7154 CNRS, Paris, France

<sup>4</sup> University Paris Diderot, Paris and ANGE Team, INRIA, CETMEF, J.-Louis Lions, Paris, France

<sup>5</sup> Université de Lorraine, GeoRessources lab., campus Artem, Nancy, F54042, France

\*Corresponding Author: J. Kinscher [j.l.kinscher@gmail.com](mailto:j.l.kinscher@gmail.com)

INERIS Nancy

c/o École des Mines de Nancy

Campus ARTEM

CS 14234, F-54042 Nancy Cedex

Telephone : (+33)3 55 66 28 81

**Abstract**

In order to improve our understanding of hazardous underground cavities, the development and collapse of a ~200 m wide salt solution mining cavity was seismically monitored in the Lorraine basin in northeastern France. The microseismic events show a swarm-like behaviour, with clustering sequences lasting from seconds to days, and distinct spatiotemporal migration. Observed microseismic signals are interpreted as the result of detachment and block breakage processes occurring at the cavity roof. Body wave amplitude patterns indicated the presence of relatively stable source mechanisms, either associated with dip-slip and/or tensile faulting. Signal overlaps during swarm activity due to short inter-event times, the high frequency geophone recordings, and the limited network station coverage often limit the application of classical source analysis techniques. To overcome these shortcomings, we investigated the source mechanisms through different procedures including modelling of observed and synthetic waveforms and amplitude spectra of some well located events, as well as modelling of peak-to-peak amplitude ratios for the majority of the detected events. We extended the latter approach to infer the average source mechanism of many swarming events at once, using multiple events recorded at a single three component station. This methodology is applied here for the first time and represents an useful tool for source studies of seismic swarms and seismicity clusters. The results obtained with different methods are consistent and indicate that the source mechanisms for at least 50% of the microseismic events are remarkably stable, with a predominant thrust faulting regime with faults similarly oriented, striking NW-SE and dipping around 35-55°. This dominance of consistent source mechanisms might be related to the presence of a preferential direction of pre-existing crack or fault structures. As an interesting by-product, we demonstrate, for the first time directly on seismic data, that the source radiation pattern significantly controls the detection capability of a seismic station and network.

## 1. INTRODUCTION

A series of catastrophic subsidence and ground failure events occurred in the 1990's in the iron-ore basin of the Lorraine region in northeastern France. Decades of intensive excavation mining activity have left vast underground rooms and pillars beneath urban areas some of which have collapsed (e.g. Didier 2008). To prevent these disasters in the Lorraine region and other post-mining districts, current research aims to better understand the governing failure mechanisms and dynamics and to improve the efficiency of local microseismic and geodetic monitoring, which represents a major instrument of the French post-mining risk management (e.g. [Contrucci et al. 2010](#); [Couffin et al. 2003](#); Didier 2008).

In this context, the "Cerville-Buissoncourt" multiparameter research project was carried out by the research Group for the Impact and Safety Of underground works (GISOS, <http://gisos.ensg.inplnancy.fr/gisos-info-en/gisos-info-en/>) in the Lorraine basin. During the period 2004-2009, an evolving, ~200 m wide salt solution mining cavity initiated by brine pumping (Fig. 1) was monitored until its final, controlled collapse in February 2009 ([Contrucci et al. 2011](#); [Kinscher et al. 2015](#); [Klein et al. 2008](#); [Jousset & Rohmer 2012](#); [Lebert et al. 2011](#); [Mercerat et al. 2010](#)). The salt deposit was exploited by solution mining using the channel and drilling technique along two exploitation profiles A and B (Fig. 1). The local geology is part of the Triassic salt formation of the Paris Basin, which consists of subhorizontal submarine sediments, including a thin and stiff Dolomite layer at 119 to 127.5 m depth (Fig. 1, Table 1), which is supposed to significantly control the mechanical stability of the salt cavity ([Daupley et al. 2005](#); [Mercerat 2007](#)). During the project period, a huge microseismic dataset of about 50,000 triggered event files, was recorded by a microseismic network containing nine 40 Hz geophones ([Contrucci et al. 2011](#)) mainly installed in boreholes (Fig. 1).

Understanding the source mechanisms associated with the microseismic data is of particular interest to evaluate existing mechanical models and to understand the governing ground failure dynamics. However, the application of adequate, full-waveform based source analysis tools, like automatic moment tensor inversion approaches (e.g. [Dahm et al. 1999](#); [Sen et al. 2013](#)), is challenging and limited for the Cerville dataset. The microseismic events appear preliminary in the form of swarms (~ 80 %), where individual

1  
2  
3 events often cannot be clearly isolated from each other (Fig. 2) (Kinscher et al. 2015). Moreover, the high  
4  
5 frequency data show the presence of strong propagation effects, in particular strong refractions at the  
6  
7 Dolomite layer (Kinscher 2015; Kinscher et al. 2015), which are difficult to model with sufficient  
8  
9 accuracy, and thus strongly affect the robustness of such inversion approaches. In addition, a stable source  
10  
11 inversion is hindered by the limited number and azimuthal coverage of three component stations (Fig. 1).

12  
13 We present a comprehensive and unconventional source analysis study constraining the governing source  
14  
15 mechanisms for almost the entire microseismic dataset. The analysis is a continuation of Kinscher et al.  
16  
17 (2015), who addressed the detection and location problem of microseismic swarms at Cerville. Kinscher  
18  
19 et al. (2015) analyzed a dataset corresponding to a microseismic crisis lasting from March to May 2008,  
20  
21 which was related to a significant upward migration of the cavity roof by about 50 m. The location results  
22  
23 showed that microseismic swarms represent systematic epicentre migration sequences (lasting from  
24  
25 seconds to days), which were interpreted as dynamic detachment and block breakage processes at the  
26  
27 cavity roof. In addition, they reported an apparent systematic source effect on the body wave amplitude  
28  
29 pattern, documenting an apparent similarity in source mechanisms for most recorded events, whose  
30  
31 detailed analysis is the main interest of this study.  
32  
33  
34

35  
36 The paper is organized as follows: first, we present the main features of the microseismic records, some  
37  
38 previous source analysis attempts, and the characteristics of the observed systematic source effect  
39  
40 (Section 2). Section 3 introduces the different used datasets. Section 4 provides details of the adopted  
41  
42 source inversion approach, and the inversion results. The multiple source inversion results are discussed  
43  
44 in Section 5, where we propose a preliminary model to explain the apparent stability in source  
45  
46 mechanisms.  
47  
48  
49  
50

## 51 **2. PREVIOUS SOURCE STUDIES AND INDICATIONS FOR A SYSTEMATIC SOURCE** 52 53 **EFFECT** 54

55 At the Cerville-Buissoncourt study site, microseismic swarming events have been classified in two major  
56  
57 event groups (Fig. 2): (i) isolated events, where single events are distinguishable and (ii) tremor-like  
58  
59  
60

1  
2  
3 events, which represent quasi-continuous signals formed by interlaced seismic events (Mercerat et al.  
4  
5 2010; Kinscher et al. 2015). Despite this formal difference in the signal appearance, the event location  
6  
7 results suggested that the two microseismic event types represent fracturing and breakage processes at the  
8  
9 cavity roof (Kinscher et al. 2015). Moreover, no differences in the spectral characteristics could be  
10  
11 observed among the two families of signals from the recordings of high frequency instruments. The  
12  
13 spectral content for both event types is dominated by frequencies in the range 10-150 Hz (Fig. 2), which  
14  
15 agrees with the expected range for shearing and detachment cracking at the cavity roof (Malovichko et al.  
16  
17 2010; Wust-Bloch & Joswig 2006).

18  
19  
20 Mercerat et al. (2010) studied the source spectra of eight events occurring in both isolated and tremor-like  
21  
22 swarming sequences in the project period 2005-2007, without finding any significant difference in source  
23  
24 parameters. Using an omega-squared ( $\omega^2$ ) model (Aki 1967) and Brune's scaling approach for S wave  
25  
26 spectra (Brune 1970), the authors found moment magnitudes in the range  $M_w$  -2 to 0, source radii of a  
27  
28 few to several tens of meters (6 - 31 m) and relatively low stress drops compared to natural earthquakes  
29  
30 ranging from  $10^{-3}$  to  $10^{-2}$  MPa. Furthermore, the authors suggested the presence of tensile source  
31  
32 components indicated by low S/P wave displacement spectral plateau ratios  $\Omega_S/\Omega_P$  of  $< 4$ , which are  
33  
34 inconsistent with the radiation pattern of a pure shear crack model (Walter & Brune 1993). In addition,  
35  
36 laboratory tests indicated extremely low tensile strengths with respect to some Marl samples, located at  
37  
38 the cavity roof (Mercerat et al. 2010; Souley et al. 2008).

39  
40  
41 Recently, Kinscher et al. (2015) suggested the presence of an apparent source effect by means of S/P  
42  
43 wave amplitude ratio inspection of 54 selected events of the 2008 crisis. They observed that S/P wave  
44  
45 amplitude ratios became systematically smaller for smaller station incidence angles, so that one observes  
46  
47 comparatively very strong P compared to S waves when the receiver is located directly above the event.  
48  
49 Here, we confirm this tendency for 20 more selected events of the 2008 crisis (Appendix A), all located  
50  
51 below stations 6.1-3 (Fig. 1a). The waveform example of "event 1" in Figure 3 shows a dominant P wave  
52  
53 amplitude on the vertical component, while significantly smaller S waves barely can be seen on the  
54  
55 horizontal components.  
56  
57  
58  
59  
60

1  
2  
3 This consistent finding suggests that analyzed events had very similar source mechanisms, which are in  
4 agreement with a source model of predominant tensile faulting with a horizontal plane, with dominant P  
5 wave upward and dominant SV-wave radiation at  $45^\circ$  (Kinscher et al. 2015) (Fig. 4). However, Kinscher  
6 et al. (2015) found also a clear evidence for the presence of significant SH wave energy, supporting the  
7 presence of shearing mechanisms, i.e. dip-slip faulting (Fig. 4). Most of the visually inspected events,  
8 including the 54 events of the training set (Kinscher et al. 2015) and the 20 events below stations 6.1-3  
9 (Appendix A), demonstrated clearly positive upward P wave polarities as shown for event 1 (Fig. 3). No  
10 event with clear negative P polarity was observed, which is consistent with the tensile source model with  
11 horizontal plane, but also fitting with a dip-slip mechanisms associated with thrust faulting.  
12 Consequently, when referring to a dip-slip mechanism, we generally refer to a pure thrust fault  
13 mechanism.  
14  
15  
16  
17  
18  
19  
20  
21  
22  
23  
24  
25  
26  
27  
28

### 29 **3. DATA**

30  
31 The microseismic event catalogue used in this study was generated by using the swarming adapted  
32 detection and location approaches of Kinscher et al. (2015). Automatic detection was performed by using  
33 a polarization approach providing P wave phase arrival detection and P wave polarization angles, i.e.  
34 incidence and backazimuth angle. The polarization approach is only applied to three component stations  
35 3, 5 and 6.2. Locations were then obtained by using the polarization angles and an amplitude based  
36 location approach (Fig. 1). While epicentre locations are well resolved, source depth estimations remain  
37 uncertain.  
38  
39  
40  
41  
42  
43  
44  
45

46 In total, the catalogue considered here contains ~35,000 events. Around 23,000 events have been detected  
47 in 2008 with ~15,000 events during the March to May microseismic crisis and ~8,000 events during the  
48 subsequent aftershock sequence lasting until the end of December 2008. From January 2009 to February  
49 12, 2009, 10:00 a.m., we detected further ~13,000 events which correspond to the initial phase of the  
50 induced cavity collapse and the failure of the stiff Dolomite layer in the overburden (Contrucci et al.  
51 2011; Jousset & Rohmer 2012; Lebert et al. 2010).  
52  
53  
54  
55  
56  
57  
58  
59  
60

1  
2  
3 We selected four different event datasets from this event catalogue, which were chosen for specific  
4 reasons associated with the performed source analysis (Fig. 1). *Dataset 1* represents the 74 classically  
5 located events which have more reliable source depth estimations (Fig. 1a,b). *Dataset 2* contains ~6,000  
6 events of the microseismic crisis in 2008 and the subsequent aftershock sequence. This dataset includes  
7 the strongest events of this period and include those events detected by all three component stations 3, 5,  
8 and 6.2 and thus where P wave polarization angle could be determined (Fig. 1). *Dataset 3* and *4* represent  
9 those events detected by station 6.2 in 2008 and 2009. *Dataset 3* contains ~15,000 events detected during  
10 the crisis and the aftershock sequence in 2008 (~ 66% of all events in 2008). *Dataset 4* contains all events  
11 of *dataset 3* plus ~7,500 events detected during the initial collapsing phase in 2009 (~ 57% of all events in  
12 2008 and 2009). Incidence angles measured at station 6.2 for *dataset 4* are in average higher as compared  
13 to *dataset 3* as probably due to the increasing microseismic activity in the overburden at shallower source  
14 depth. Datasets 2-4 sample both isolated and tremor-like event types (Fig. 2).  
15  
16  
17  
18  
19  
20  
21  
22  
23  
24  
25  
26  
27  
28  
29  
30

#### 31 4. SOURCE ANALYSIS AND RESULTS

32 We present a comprehensive source analysis, constraining the source mechanisms for the 2008 data. Our  
33 analysis is based on (i) qualitative observations (Section 4.2 and 4.5) and (ii) quantitative source  
34 inversions (Section 4.3 and 4.4) based on specific datasets (Section 3).  
35  
36  
37  
38  
39

40 In Section 4.2, we constrain the origin of the observed systematic source effect (Kinscher et al. 2015) by  
41 using different observed and synthetic peak-to-peak body wave amplitude ratios. We examine T/ZR ratios  
42 to assess the relative SH-wave energy compared to P and SV waves, which provides an appropriate  
43 criterion to distinguish between shear source, i.e. a double couple (DC) model, and non shear models,  
44 such as a tensile crack model or an isotropic source (Fig. 4). At vertical ray incidence, SH wave energy is  
45 zero for the tensile crack model and the dip-slip DC model, however it increases for the latter model for  
46 more horizontal incidence angles. For this reason, we analyze T/ZR ratios as a function of incidence  
47 angles. For this analysis we consider *dataset 1*, because the incidence angles for all three component  
48 stations are relatively well known from reliable source depth. Then, we discuss the distribution of T/ZR  
49  
50  
51  
52  
53  
54  
55  
56  
57  
58  
59  
60



1  
2  
3 ratios for *dataset 2*, where it is assumed that locations are homogeneously distributed over the cavity zone.  
4  
5 Another important reason for the choice of T/ZR instead of S/P ratios is that no incidence angle are  
6  
7 required for its calculation, which are uncertain for station 3, 5, and 63 (Kinscher et al. 2015).  
8  
9

10 As shown by Figure 4, P, SV and SH wave radiations are radially symmetric for the tensile crack model;  
11  
12 they change significantly for the dip-slip model, where they depend on the fault orientation. This  
13  
14 distinction provides another criterion to discriminate among these models. To this goal, we analyze SV/P  
15  
16 and SH/SV amplitude ratios at station 6.2 using *dataset 3*. Station 6.2 is the most appropriate for this  
17  
18 analysis, since it provides the full range of backazimuth angles (0-360°) and refracted signals are less  
19  
20 pronounced, so that estimated incidence angles approximate relatively well the true source-receiver  
21  
22 direction (Kinscher et al. 2015).  
23  
24

25 The quantitative source analysis relies on two inversion approaches. The first approach (Section 4.3)  
26  
27 models observed amplitude spectra at different stations to resolve the best source model. The inversion is  
28  
29 performed for a single, selected event (event 1, Fig. 3) of *dataset 1*, located directly below stations 6.1-6.3  
30  
31 (Fig. 1). It is then examined if the observed dominant vertical P wave radiation observed for low  
32  
33 incidence angles can be explained by one of the two source models, either DC or tensile crack. Our results  
34  
35 show that, in the given monitoring conditions, this approach is not robust and therefore not appropriate to  
36  
37 analyze source mechanisms for several events. Robustness and results stability are generally limited by  
38  
39 the poor azimuthal coverage of three component stations (Fig. 1), the fit of high frequency data (> 20 Hz)  
40  
41 and the presence of strong refraction effects (Kinscher et al. 2015).  
42  
43

44 A more convenient source inversion approach, used for ~66% of the entire 2008 catalogue, is provided by  
45  
46 *inversion 2* (Section 4.4), where peak-to-peak amplitude ratios of station 6.2 for *dataset 3* are modelled as  
47  
48 a function of backazimuth and incidence angles. The approach assumes that the source mechanism  
49  
50 remains constant for all considered events, which is supported by the systematic source effects observed  
51  
52 by Kinscher et al. (2015) for the March-May 2008 activity, and interpreted in terms of focal mechanism  
53  
54 similarity. We will show that, if this assumption holds, it is then theoretically feasible to use the  
55  
56 microseismic data of several events observed at one single station to constrain a common source  
57  
58  
59  
60

1  
2  
3 mechanism. This technique will provide the statistically dominant mechanism, if the latter is not the same  
4  
5 for all events.  
6

7  
8 Finally, we investigated the ability of using the single station P-wave detection capability to determine the  
9  
10 predominant source mechanism (Section 4.5). For this analysis station 6.2 and *dataset 4* were used. The  
11  
12 inclusion of the data of the collapsing period in 2009 improves the resolution of the detection  
13  
14 performance for high incidence angles.  
15  
16

#### 17 18 **4.1 Velocity model and synthetic seismogram calculation** 19

20  
21 Prior to our inversion attempts, Green's functions and synthetic seismograms were calculated using the  
22  
23 QSEIS code (Wang 1999). To get reliable source mechanisms from the comparison of observed and  
24  
25 synthetic data, it is important to use a well constrained 1-D velocity model. Inclusion of signals strongly  
26  
27 affected by 3-D propagation effects, such as scattering, and multipathing at the 3-D cavity structure  
28  
29 should be avoided. We used the velocity model shown in Table 1, which is based on the Mercerat et al.  
30  
31 (2010) model and includes improved shallow structure estimation due to inclusion of new, precise  
32  
33 estimates of P and S wave velocities and  $Q$  factors for the sedimentary units located between stations 6.1-  
34  
35 3 (Fig. 1). The elastic parameters ( $V_P$ ,  $V_S$ ,  $Q_P$  and  $Q_S$ ) were estimated using a cross-correlation and  
36  
37 spectral amplitude ratio approach for the 20 events from *dataset 1* located below receivers 6.1-3 (Fig. 1a).  
38  
39 S wave velocities and  $Q$  factors have only been determined for the sedimentary layer between station 6.2  
40  
41 and 6.3. Resulting  $V_P/V_S$  and  $Q_P/Q_S$  ratios have then been used to determine S wave parameters for the  
42  
43 shallower layers between station 6.1 and 6.2. Elastic parameters for the Dolomite layer and deeper  
44  
45 sedimentary units have been adapted from the model of Mercerat et al. (2010). Details of this procedure  
46  
47 can be found in Appendix A.  
48  
49

50  
51 As shown below, observed and synthetic waveforms, amplitude spectra and peak-to-peak amplitudes are  
52  
53 systematically compared for each station. In this context, a Green's function database computed using the  
54  
55 Kiwi tools (Heimann 2011; Heimann et al. 2014) allowed a quick computation of synthetic seismograms  
56  
57 for different receiver depths (Fig. 1).  
58  
59  
60

#### 4.2 Constrains from peak-to-peak amplitude ratios

Previous studies showed that the fit of body wave amplitude ratios is an appropriate method to determine source parameters of weak and moderate earthquakes associated with short source durations (e.g. [Hardebeck & Shearer 2003](#); [Julian & Foulger 1996](#); [Kisslinger 1980](#); [Rau et al. 1996](#)). This approach was already applied to microseismicity related to solution mining ([Godano et al. 2012](#)). We used the amplitude ratios to investigate the apparent consistency among source mechanisms by examining the four elementary source models shown in Figure 4.

Peak-to-peak amplitudes (Fig. 3) were measured for a fixed frequency range of 30 - 90 Hz, where signals are most energetic (Fig. 2), and in accordance with the frequency range proposed by [Malovichko et al. \(2010\)](#). Synthetic peak-to-peak amplitudes were estimated from full wave form synthetic seismogram for the same frequency band. T/ZR amplitude ratios were calculated from horizontally rotated seismograms (RTZ radial-coordinate system). SH amplitudes are estimated from the T components. P and SV amplitudes are contained in the R and Z components. P/SV and SV/SH ratios were calculated by full ray oriented component rotation into the LQT coordinate system (e.g. [Plesinger et al. 1986](#)).

The synthetic T/ZR ratios were calculated for four elementary source models (Fig. 4 and 5b): a strike-slip fault (*ss*), a dip-slip fault (*ds*), a tensile source (*tc*) with horizontal crack geometry, and an explosion (*iso*). Before ratio calculation we added Gaussian noise to the synthetic seismograms to simulate a S/N-ratio equal to ten, which correspond to the minimum S/N-ratio observed for *dataset 1* and *2* (Fig.5). As a result, for source models where SH wave energy is zero (generally for *tc*, *iso* but also in some cases for *ds* and *ss*), the T component peak-to-peak amplitude is not exactly zero, but equal to the level of background noise.

For each of the four source models and each three component station the synthetic T/ZR ratios were calculated for a 20 m grid of epicentre source locations covering homogeneously the entire cavity zone, while keeping the source depth fixed at 150 m (Fig. 5). In this way, synthetic ratios can be consistently compared to both *datasets 1* and *2*. Strike for the *ds* and *ss* model was assumed to be constant at  $0^\circ$  (Fig.

1  
2  
3 5). The influence of constant strike on the results is negligible for stations 6.2 and 6.3, where backazimuth  
4 angle range from 0-360° for each considered incidence angle. Results for stations 3 and 5 are more  
5 sensitive to the choice of strike, since only a limited backazimuth angle range of < 90° is provided for  
6 each incidence angle. Nonetheless, using a strike of 0°, synthetic T/ZR ratio generally provide the  
7 maximum expected SH wave radiation compared to P and SV waves at both stations for the *ss* and the *ds*  
8 model, being at a backazimuth of 135° at station 3 and at 305° at station 5 (e.g. Fig. 4).  
9

10 Figure 5 shows the observed and synthetic T/ZR ratios for *dataset 1* (Fig. 1). The observed T/ZR-ratios  
11 are relatively stable with values between -1 and 1 over the entire range of station incidence angles (Fig.  
12 5a). The comparison with the synthetics shows that the *ds* model reproduces best the observed amplitude  
13 ratio distribution. To show that these results are also valid for the strongest events in 2008, Figure 6  
14 shows the T/ZR ratios for the *dataset 2*. Figure 6a-d shows that the range of T/ZR ratios for all events also  
15 falls in the range from -1 to 1. Again, the comparison to the synthetic T/ZR ratios for the four investigated  
16 source models supports a simple *ds* DC source model. The *tc* and *iso* source models only explain some of  
17 the lowest observed T/ZR ratios, but do not explain well the majority of observed events. The *ss* model  
18 agrees well with T/ZR ratios for stations 3 and 5, but most of the T/ZR ratios observed at stations 6.2 and  
19 6.3 cannot be explained by this model.  
20

21 Further evidence for a *ds* mechanism comes from an increase in the averaged T/ZR ratio with increasing  
22 average incidence angles (Fig. 6e,f), as partially observed by Kinscher et al. (2015) for *dataset 1*. A  
23 relative increase of SH wave energy with increasing incidence angle indicates a *ds* mechanism, as shown  
24 by the relation of source radiation coefficients  $R_{P,SV,SH}$  (e.g. [Boore & Boatwright 1984](#)) for P, SV, SH  
25 waves in Figure 6f. For smaller incidence angles, the wave-field is dominated by P and SV waves, while  
26 SH wave energy becomes more important for higher incidence angles as it is mainly radiated in the  
27 horizontal plane, where SV wave radiation is smallest (Fig. 4).  
28

29 The highest average T/ZR amplitude ratio is observed for station 3, for which the average incidence angle  
30 is larger than for the other three component stations (Fig. 6e,f). Conversely, the lowest average T/ZR ratio  
31 is observed for station 6.2, where the average incidence angle is smallest (Fig. 6e,f), since it is located  
32  
33  
34  
35  
36  
37  
38  
39  
40  
41  
42  
43  
44  
45  
46  
47  
48  
49  
50  
51  
52

1  
2  
3 right above the centre of the cavity structure (Fig. 1a). We note that the absolute incidence angles in  
4  
5 Figure 6e,f may have large uncertainties because the estimated source depths are highly uncertain (e.g.  
6  
7 Kinscher et al. 2015). Nonetheless, the relative difference of the average incidence angles observed at  
8  
9 each station is likely to be well represented by the distributions shown in Figure 6e.

10  
11 In contrast to stations 3, 5 and 6.2, observations from station 6.3 deviate from this trend: T/ZR ratios and  
12  
13 SH wave energies are lower compared to the other stations, although the average incidence angle is  
14  
15 higher. This behaviour is due to significant refraction effects at the Dolomite layer interface, which can  
16  
17 lead to a decrease in the T/ZR wave amplitude ratio (Kinscher 2015). In addition, near-field effects might  
18  
19 also play a role.  
20  
21

22  
23 The incidence-angle dependence of peak-to-peak amplitudes suggests a dominant *ds* source model. To  
24  
25 examine azimuthal dependent *ds* radiation pattern, in Figure 7, we projected the P/SV and SH/SV ratios  
26  
27 of *dataset 3* to the lower station hemisphere of station 6.2. The SV/P and SH/SV ratios are distributed in a  
28  
29 systematic manner, consistent with the source radiation pattern of a pure *ds* fault striking approximately  
30  
31 N150° – 330° (Fig. 7).  
32

33  
34 The observed SV/P and SH/SV amplitude ratios qualitatively reproduce the trend predicted by the  
35  
36 synthetics. However, observed extreme ratios underestimate theoretical prediction for a pure *ds* model  
37  
38 (Fig. 7), likely due to errors and limited resolution in the estimated polarization angles ( $\pm 10^\circ$ ). Moreover,  
39  
40 the observed amplitude ratios probably do not represent distinct ray phases directly comparable to the ray-  
41  
42 theoretical radiation pattern, but consist of several seismic phases and rays, as well as scattering effects,  
43  
44 which are not reproduced by the synthetics. Smoothing to the synthetic amplitude ratios was applied to  
45  
46 10° steps (from 2° grid points) to reduce extreme values for the synthetics to the same range as the  
47  
48 observed ones (Fig. 7).  
49

50  
51 Both amplitude ratio investigations indicate that the Cerville-Buissoncourt sources consists of remarkably  
52  
53 stable NW-SE striking *ds* mechanisms. However, a mixed source model, combining a dominant DC  
54  
55 component with minor *tc* and/or *iso* components, cannot be excluded. A dominant DC component seems  
56  
57 to contradict results by Mercerat et al. (2010), which reported the presence of significant tensile source  
58  
59  
60

1  
2  
3 components suggested from very low P/S wave displacement spectra ratios. However, our new  
4  
5 estimations for the elastic parameters (Table 1, Appendix A) suggest that seismic wave velocities and  $Q$   
6  
7 factors for S waves are less than half of the P wave values, which implies that Mercerat et al. (2010)  
8  
9 significantly underestimated S wave attenuation in their spectral analysis, assuming  $Q_S = Q_P$  and  $V_P/V_S =$   
10  
11 1.73. Assuming an exponential attenuation law for body waves (e.g. Kinscher et al. 2015), a signal  
12  
13 frequency of 30 Hz and a hypocentral distance of 200 m (corresponding to the average distance at  
14  
15 Cerville), the amplitude loss of S relative to P waves is two times smaller when using the parameters of  
16  
17 Mercerat et al. (2010) rather than our new parameters. Using the new elastic parameters would increase  
18  
19 the  $\Omega_S/\Omega_P$  ratio found by Mercerat et al. (2010) by a factor of two and make them compatible with a DC  
20  
21 source model (Walter & Brune 1993). Source mismodelling is unfortunately common in microseismic  
22  
23 high frequency studies where S attenuation is often poorly known (e.g. Eisner et al. 2011).  
24  
25  
26  
27  
28

#### 29 ***4.3 Inversion 1: using conventional event-receiver configuration and amplitude spectra***

30  
31 We perform a full waveform moment tensor inversion for the microseismic event 1 (Fig. 1a and 3),  
32  
33 assuming a DC constraint (Fig. 4). The selected event is part of *dataset 1* and one of the 20 events directly  
34  
35 located below stations 6.2 and 6.3 (Appendix A) as well as one of the largest events with  $M_w \sim 0$  in the  
36  
37 beginning of the 2008 microseismic crisis (Kinscher 2015).  
38  
39

40 The inversion was performed by fitting full waveform displacement amplitude spectra in the frequency  
41  
42 range 20 - 90 Hz. Amplitude displacement spectra are computed for four three component stations (3, 5,  
43  
44 6.2, and 6.3) as well as three one component stations (2, 7, 8) (e.g. Fig 1). Station 6.1 was not used as data  
45  
46 was affected by significant site effects (Kinscher et al 2015); its data does not provide crucial  
47  
48 supplementary information compared to the data of stations 6.2 and 6.3. Since the difference in S-P travel  
49  
50 times are generally very small ( $\leq 0.02$  s), P and S waves were not separated for the inversion: we fitted  
51  
52 whole waveforms amplitude spectra for the Z, N, E components. Amplitude spectra fits are independent  
53  
54 of phase shifts between calculated Greens functions and observed seismograms due to potential errors in  
55  
56  
57  
58  
59  
60

1  
2  
3 travel times, source time origin and mislocation ([Cesca et al. 2006](#); [Dahm et al. 1999](#); [Dahm & Krüger](#)  
4 [1999](#); [Domingues et al. 2013](#)).

5  
6  
7 We find the best DC model by a direct grid search over strike, dip and rake with  $10^\circ$  grid intervals. For  
8 each focal mechanism we first invert for the scalar moment and then compute the misfit between  
9 observed and synthetic amplitudes using the  $l_2$ -norm. To correct for surface amplification effects,  
10 significant at surface stations 7 and 8 ([Kinscher et al. 2015](#)), the best fitting scalar moment was  
11 determined for each station separately. For each focal mechanism, we obtain an overall misfit, by  
12 summing station misfits upon the best fitting scalar moments. Station dependent apparent scalar moments  
13 were used to assess the spectral fit at different stations. In the results we found that the average moment  
14 scalars estimated for all considered focal mechanisms differed in average by a factor two among deeper  
15 stations. However, scalar moments at surface stations 7 and 8 were respectively seven and ten times  
16 higher compared to deeper stations. This result is consistent with the magnitude of ground amplification  
17 as observed from average spectra in [Kinscher et al \(2015\)](#). The inversion results are summarized in Figure  
18 8. To estimate solution uncertainty we show the misfit contours for 2-D model subspaces of the entire  
19 model space spanned by the grid of strike, dip, and rake (Fig. 8a). Contours present the misfit increase of  
20 5 %, 10 % and 25 % from the minimum misfit relative to the entire misfit range. For each grid point of  
21 the shown 2-D model spaces, the best misfit value was considered for contour calculation. Gray colours  
22 of the grid points itself represent the mean misfit value for each grid point.

23  
24  
25 Figure 8a shows that the inversion result converges towards a *ds* faulting mechanism with two preferred  
26 solutions (Fig. 8a-b). The minimum misfit is found for a source depth of 180 m; it increases significantly  
27 for deeper sources (Fig. 8c). The preferred source depth of 180 m slightly differs from the source depth of  
28 216 m found from S minus P wave arrival times (Fig. 1a and 8c, Appendix A). The first solution (*solution*  
29 *1*) indicates a *ds* faulting with a NE-SW strike of  $50^\circ$  and  $230^\circ$ , while the second one (*solution 2*) is  
30 striking NW-SE with  $130^\circ - 310^\circ$ , which is consistent with the "trial" *ds* mechanism of Figure 7.

31  
32  
33 Both solutions do not differ significantly in terms of misfit; hence, both solutions reproduce the  
34 observations similarly well. The quality of the fit for amplitude spectra and waveforms for *solution 1* is

1  
2  
3 shown in Figure 9a and b, respectively. Visual fits for *solution 2* are of the same quality as for *solution 1*,  
4 and are therefore not shown here. The best fit with respect to waveforms and amplitude spectra is  
5  
6 and are therefore not shown here. The best fit with respect to waveforms and amplitude spectra is  
7  
8 obtained for the Z components of stations 6.2 and 6.3, where the largest amplitudes are dominated by P  
9  
10 wave energy. The fit of these components becomes significantly worse when using the *ss* models shown  
11  
12 in Figure 8c for source depths  $\leq 150$  m, supporting the preferences for a *ds* DC model documented in the  
13  
14 previous Section. Waveform and amplitude spectra at the other stations fit less well illustrating the  
15  
16 challenges of inverting local, high frequency data. The ambiguity in the strike direction of the *ds* source  
17  
18 model (Fig. 8a) likely results from high frequency noise, uncertainties in the assumed propagation model,  
19  
20 and the limited azimuthal coverage of three component stations.  
21

22  
23 Our results show that the dominant P wave radiation in the vertical direction can be explained by a *ds*  
24  
25 source model. Moreover, it is demonstrated that the “trial” *ds* mechanism observed for most of the  
26  
27 considered events in 2008 (Fig. 7) is confirmed when analyzing one single event observed from different  
28  
29 station observations. Accordingly, we consider *solution 2* as the preferred model. In supplementary  
30  
31 modelling we tried to improve amplitude spectra fit of solution 1 and 2 by adding a minor tensile source  
32  
33 component, which however could not improve the fit. Also a pure tensile source model (0% DC) was  
34  
35 tested, but led to a higher misfit of  $\sim 0.69$  as for *solution 1* and 2 ( $\sim 0.61$ ). These results are consistent with  
36  
37 observation from Section 4.2, indicating that tensile source components represent only a minor  
38  
39 component for the considered events. Nonetheless, regarding the limited quality of amplitude spectra we  
40  
41 think that the exact quantity of the tensile component cannot be precisely determined from this data.  
42  
43  
44  
45  
46

#### 47 ***4.4 Inversion 2: using a reversed event-receiver configuration and peak-to-peak amplitudes***

48  
49 We propose a new approach, which uses the observations of several events at one station in order to  
50  
51 derive a common focal mechanism based on the theorem of seismic reciprocity (Fig. 10). We assume that  
52  
53 seismicity is characterized by a common focal mechanism (Section 4.2 and 4.3, respectively). If this  
54  
55 condition holds, the observed signal patterns for one event A at a single station (see Fig. 10, right panel)  
56  
57 will depend on the scalar moment, the focal mechanism, and their relative location. If we only consider  
58  
59  
60



1  
2  
3 relative observations, e.g. the amplitude ratio among different components, we remove the dependency of  
4 the observation on scalar moment, which is different for each event. Since we have removed moment  
5 dependency and the mechanism is the same for all sources, we can consider the true source locations as  
6 that of fictive stations, and the true station locations as the location of one single fictive source recorded at  
7 these fictive stations. Indeed, each fictive couple source-station has the same geometry as the real  
8 geometrical station-source pair configuration. While in the starting setup, we had the problem of  
9 retrieving the source model with data from a single station, in the final setup we have a much improved  
10 network geometry and azimuthal coverage, potentially having as many receivers as recorded similar  
11 events.

12  
13  
14 Figure 11 shows observed amplitude ratios for *dataset 3* at station 6.2 as a function of incidence and  
15 backazimuth angles used for source inversion. Shown are the N/E, the T/ZR, and the R/ZT amplitude  
16 ratios. The amplitude ratios have been chosen, since systematic dependencies on the backazimuth and  
17 incidence angles could be observed, with local minima and maxima at distinct backazimuths, indicating  
18 the presence of a statistically dominant source mechanism (Fig. 11).

19  
20  
21 The significant dependence of the N/E ratio on the backazimuth angle indicates a predominance of radial  
22 wave field components, i.e. P and SV waves, for low incidence angles ( $\leq 30^\circ$ ) (Fig. 11) which is  
23 consistent with a *ds* model radiation pattern (e.g. Fig. 4). A more randomly distributed N/E ratio with  
24 backazimuth would be expected for strike slip radiation pattern associated with dominant SH waves in the  
25 horizontal components.

26  
27  
28 The T/ZR ratio reflects the relative energy of SH compared to P and SV waves, while the R/ZT ratio  
29 reflects the relative quantities of P and SV wave amplitudes in the radial and vertical components. The  
30 inclusion of the T component in the R/ZT provided slightly better results as compared to a simpler R/Z  
31 ratio. We suggest that the inclusion of the T component allows for more accurate simulation of the  
32 observed amplitude ratio, since it contains valuable information on the refraction related propagation  
33 effects which significantly affects the SH/SV,P ratio, as found from synthetic seismogram modelling  
34 (Kinscher 2015).

1  
2  
3 The inversion is set up to fit the coloured points in Figure 11, which represent the average of 4 incidence  
4 angles at 0°, 10°, 20° and 30° and 36 distinct average backazimuth angles for the range 0 – 350° using  
5 10° intervals and  $\pm 10^\circ$  overlap as consistent with uncertainty in polarization angle determination. As a  
6 result, each observed amplitude ratio dataset (N/E, T/ZR, R/ZT) is represented by 144 mean amplitude  
7 ratios. Synthetic amplitude ratios were then determined from full waveform synthetic seismograms for the  
8 grid of DC models defined in Section 4.3, while for each of these models the theoretical source was  
9 placed at 144 different locations, corresponding to the binned backazimuths and incidence angles for a  
10 fixed source depth of 150 m. Source depth was defined based on sonar data measurements conducted  
11 before and after the crisis in 2008, documenting a cavity roof growth of 50 m with final roof heights  
12 ranging from 120 m to 200 m and a mean height of around 150 m (Kinscher et al. 2015). Other source  
13 depths in this range have been tested, but had no significant impact on the results.

14  
15  
16  
17  
18  
19  
20  
21  
22  
23  
24  
25  
26  
27 The fit between the observed and synthetic amplitude ratios was estimated by using the  $l_1$ -norm. Before  
28 misfit calculation, we normalized each of the three observed and synthetic amplitude ratios by division of  
29 the absolute maximum value before misfit calculation (Fig. 11). The aim of this normalization was to  
30 secure the identification of the mechanism that best fits the observed relative trends in amplitude ratio as a  
31 function of backazimuth and incidence angle. Modelling and misfit calculation based on the true ratios  
32 did not always provide stable results, since observed extreme ratios are smaller than synthetics. The lower  
33 extreme ratios in the observed data are due to errors and limited resolution in the estimated polarization  
34 angles, the presence of scattering and multi-pathing effects and to the presence of events that differ in  
35 source mechanism.

36  
37  
38  
39  
40  
41  
42  
43  
44  
45  
46 The grid search results (Figure 12) are consistent with the results of *inversion 1* (Fig. 8), and the "trial" *ds*  
47 solution (Fig. 7). The misfit contours indicate, similarly to *inversion 1* (Fig. 8), the preference for a dip  
48 slip faulting mechanism (Fig. 12). Again, two possible solutions representing almost pure *ds* faulting with  
49 NE-SW and NW-SE striking are found. However, in contrast to *inversion 1*, the shape of misfit contours  
50 and the 25 best solutions show a clear preference to the NW-SE striking model (Fig. 8).

1  
2  
3 To check the stability of these results and examine possible violations of the a priori assumption of a  
4 consistent source mechanism, we applied a Jack-knife approach. We divided *dataset 3* into four subsets  
5 that provide the calculation of all 144 ratios. The subsets correspond to the four classified periods of  
6 microseismic activity in 2008 as defined by Kinscher et al. (2015), with three periods in the crisis from  
7 March to May and one long lasting aftershock period from May to December. Subsets contain a total of  
8 2708, 3803, 4209 and 4499 events, respectively. All subsets have been analyzed in the same manner as  
9 *dataset 3* and showed very similar misfit contours to the ones shown in Figure 12, with a minimum misfit  
10 for *solution 1*. This analysis further underlines the robustness and reliability of the performed inversion  
11 and that the a priori assumption seems to be valid independent of time.  
12  
13  
14  
15  
16  
17  
18  
19  
20  
21  
22

23 The comparison of observed and synthetic ratios, for both solutions, explains the observed trends and  
24 dependencies with backazimuth and incidence angle, while the qualitative fit seems better reproduced for  
25 *solution 1* (Fig.13). For both solutions, the ratio fit is slightly worse for lower incidence angle  $\leq 10^\circ$ ,  
26 which results from erroneous backazimuth angle determination and amplitude ratio calculation at vertical  
27 incidence angle (Kinscher et al. 2015). Additional tests showed that weighting or excluding these ratios  
28 during inversion does not affect the results.  
29  
30  
31  
32  
33  
34

35 *Solution 1* is clearly in better agreement with the “trial” *ds* model and the P/SV and SH/SV amplitude  
36 ratios presented in Figure 7, and is thus our preferred model. Quantitatively, we estimated that about 80%  
37 of *dataset 3* agrees well with the NW-SE striking *ds* model (Fig. 12), if we allow for a  $20^\circ$  uncertainty in  
38 strike. These results were found in a supplementary modelling approach, where we analysed the data-  
39 model misfit for *solution 1* combined with different quantities of random *ds* mechanisms. The misfit  
40 significantly decreased when assuming a proportion of 20 % of random *ds* mechanisms, instead of a  
41 unique *solution 1 ds* mechanism or higher proportions of random *ds* mechanisms. In contrast, the misfit  
42 for *solution 2* could not be improved from analogue modelling attempts and remained more than twice as  
43 large as the improved misfit obtained for *solution 1*. Consequently, we suggest that solution 1 (NW-SE) is  
44 the dominant *ds* faulting mechanism while random strikes mixed with some unknown proportion of  
45 *solution 2* (NE-SW) would represent the remaining 20% of mechanisms.  
46  
47  
48  
49  
50  
51  
52  
53  
54  
55  
56  
57  
58  
59  
60

1  
2  
3 In summary, we showed that events of *dataset 3* can be explained by a common source mechanism using  
4 peak-to-peak amplitude estimates from a single three component station. The approach might be an  
5 efficient alternative to event-wise source inversion procedures, when studying source mechanisms of  
6 seismic clusters and swarms from sparse networks and very local, high frequency recordings. Instead of  
7 using amplitude ratios, Kinscher (2015) showed that also multiple event amplitude spectra of the  
8 components of one single station can be used to infer the common source mechanism. Results of this  
9 approach are consistent with the results found in this study, but required a seismic moment normalization  
10 procedure making it more inconvenient compared to the usage of amplitude ratios. It should be noted that  
11 the current approach is designed for the usage of one single station only, which might be a drawback,  
12 when more than one station and data is available. One solution of this problem might be the  
13 implementation of probability density function conjunctions for all involved stations.  
14  
15  
16  
17  
18  
19  
20  
21  
22  
23  
24  
25  
26  
27  
28

#### 29 ***4.5 Influence on the detection capability***

30  
31 For automatic event detection a trigger value was used to detect well polarized P wave energy. Assuming  
32 a constant seismic noise level, the detection performance is controlled by the P wave amplitude, and an  
33 event is detected only when the P wave amplitude exceeds a given threshold at different stations. The  
34 recorded P wave amplitude depends on source location, the event magnitude and its focal mechanism. If  
35 the station is located close to a nodal plane, even a relatively large event could be missed. The large  
36 Cerville dataset and the characteristic repeated focal mechanisms provide an opportunity to investigate  
37 whether the detection capacity is affected by the source radiation pattern.  
38  
39  
40  
41  
42  
43  
44  
45

46 Figure 14 shows the radiation coefficient for P waves ( $R_p$ ) (Boore & Boatwright 1984), calculated for the  
47 *ds* mechanisms striking NW-SE and NE-SW using a Poisson's ratio of  $\nu = 0.379$  (calculated from elastic  
48 parameters of Table 1), and compares it to the number of detected P wave phases as a function of the  
49 backazimuth and incidence angles observed from station 6.2. The detected P wave phases correspond to  
50 the events of *dataset 4*. The number of detected P wave phases increases with decreasing incidence angles  
51 as consistent with the  $R_p$  values of both *ds* models (Fig. 14a,c). The number of P wave detections and  $R_p$   
52  
53  
54  
55  
56  
57  
58  
59  
60

1  
2  
3 values correlate also well as function of backazimuth angle when using the *ds* mechanisms striking NW-  
4 SE, but are anti-correlated for the NE-SW *ds* model (Fig. 14b,d). Effects from attenuation or spatially  
5 confined zones of seismicity can widely explain the correlation with incidence angles, but are rather  
6 unlikely to produce the obvious correlation with backazimuth angles. Hence, these results demonstrates  
7 that the NW-SE striking *ds* mechanism controls the number of detected P wave phases at the considered  
8 station as a function of backazimuth and incidence angle, what in turn supports the hypothesis of source  
9 mechanisms consistency for the microseismic events. The anti-correlated pattern observed for the NE-SW  
10 *ds* model further supports our preference to the NW-SE *ds* model.

11  
12 These results highlight that the detection capability of single sensors, and consequently of a seismic  
13 network, can be significantly affected by the source mechanisms. This observation might be of significant  
14 relevance for methods used to assess the performance of (micro)seismic monitoring networks but also to  
15 evaluate the quality and representativeness of seismic catalogs. The analysis of seismic catalogues are  
16 often based on determining the magnitude of completeness ( $M_C$ ), which is the lowest magnitude at which  
17 100% of the events in a space-time volume are detected (e.g. Rydelek & Sacks 1989; Woessner &  
18 Wiemer 2005). Usually the most important parameters for  $M_C$  seem to be event-receiver distance and  
19 event magnitude (e.g. [Schorlemmer & Woessner 2008](#)). The simplified model may not always hold, since  
20 the detection probability may additionally depend on the direction of incoming wave, mostly depending  
21 on the cavity geometry and structural heterogeneities (Plenkers et al. 2011; Maghsoudi et al. 2013).  
22 However, few studies (e.g. [Stabile et al. 2013](#)) have considered the influence of source radiation pattern  
23 so far. Our results support the notion that radiation pattern may in some cases significantly impact  
24 detection performance, and that  $M_C$  may depend on faulting style and source-receiver geometry.

## 51 **5. DISCUSSION**

52  
53 We demonstrated that the microseismic events recorded in 2008 have similar source mechanisms. The  
54 results of the two independent inversion approaches (Fig. 8 and 12) are remarkably consistent and  
55 indicate dominant *ds* faulting with dips ranging from  $35^\circ$  to  $55^\circ$  and slip directions (rake) from  $80^\circ$  -  $100^\circ$ ,

1  
2  
3 while two dominant strike directions trending NE-SW and NW-SE exists. P/SV and SH/SV amplitude  
4 ratios (Fig. 7), the results of *inversion 2* (Fig. 12) and the number of detected P wave phases as a function  
5 of backazimuth (Fig. 14) suggested a preference to the NW-SE ( $\pm 20^\circ$ ) striking *ds* model, which explains  
6 the amplitude ratios for  $\sim 80\%$  of *dataset 3*, and thus 53% of the entire event catalogue recorded in 2008.

7  
8  
9  
10  
11  
12 The hypothesis that the entire 2008 microseismic data set is dominated by thrust faulting implies that the  
13 minimal principal stress is vertically oriented ( $\sigma_3 = S_V$ ). The dominance of thrust faulting above  
14 underground openings is not new and was frequently observed in shallow mines (e.g. [Horner &](#)  
15 [Hasegawa 1978](#)), but also in fluid-filled underground cavities at larger depth ( $\sim 2000$  m). For instance,  
16 Godano et al. (2012) found evidence for thrust faulting induced from solution mining in the Arkema-  
17 Vauvert salt field (France), which occurred mostly along pre-existing fault structures. In addition,  
18 [Bardainne et al. \(2008\)](#) documented dominant thrust faulting above a gas filled anticline structure in the  
19 Lacq gas field (France).

20  
21  
22  
23  
24  
25  
26  
27  
28  
29 In contrast, the role of NW-SE oriented thrust faulting at Cerville is not clear. Even though we cannot  
30 fully resolve the orientation, we suggest that the observed consistent thrust fault orientation results from  
31 the presence of pre-existing fault structures at the study site (Fig. 15). A regional tectonic map (Fig. 15a)  
32 shows two major families of fault structures, oriented NW-SE (green lines) and NE-SW (reddish lines),  
33 consistent with the orientation of our two *ds* fault models, with the NW-SE fault family dominating in the  
34 study region, consistent with our preferred NW-SE oriented *ds* fault model. In addition, one local fault  
35 segment, oriented NW-SE, has been reported about 1 km SE from the Cerville cavity structure (Xavier  
36 Daupley, personal communication). We suggest that the vertical-to-horizontal differential stress before  
37 the exploitation start at Cerville was probably very small (Byerlee law), which was then significantly  
38 increased by the creation of the salt cavity, activating pre-existing fault structure (Fig. 15b-c). Thus, the  
39 dominant compressive stress is horizontal compression, whose main axis depends more on the structure  
40 of the cavity than on the orientation of the pre-cavity stresses. In other words, the activated fault  
41 structures seem to be due to the inherited structures and the growth of the cavity rather than to the present  
42 regional stress field.

1  
2  
3 The dominance of the NW-SE striking *ds* model thus might indicate that either the NW-SE fault  
4 population dominates at the study site or the cavity generates a strongly NE-SW directed horizontal stress  
5 field. However, considering the complex 3-D shape of the fluid filled cavity, which is significantly  
6 evolving with time (Kinscher et al. 2015), it seems unlikely that the cavity geometry alone can produce a  
7 distinct alignment of the local maximal compressive stress  $S_H$  in agreement with one or both observed *ds*  
8 fault models. Consequently, we suggest that the distribution of pre-existing structures is the determining  
9 factor of predominantly NW-SE oriented thrust faulting.  
10  
11  
12  
13  
14  
15  
16  
17  
18  
19

## 20 21 **6. CONCLUSION**

22 We analyzed the source mechanisms of microseismic swarms at the Cerville-Buissoncourt study site and  
23 presented innovative approaches to overcome difficulties in source analysis arising from event waveforms  
24 overlapping in swarms, high frequency geophone recordings of weak events, and a limited network  
25 station coverage.  
26  
27  
28  
29  
30

31 Source mechanisms were investigated in three steps. First, distinct trends in observed waveform  
32 amplitude ratios were discussed and compared to synthetics. The results showed that the mechanisms for  
33 at least 50 % of the detected events can be approximated by a *ds* DC source model. Second a DC  
34 constrained moment tensor inversion was performed through modelling of amplitude spectra for one well  
35 located event. Third, we introduced a new method to investigate the common source mechanisms of  
36 swarm events, using peak-to-peak amplitude ratios observed from only one single three component  
37 station. Under the hypothesis that focal mechanisms are very similar, we show that the inverse problem is  
38 equivalent to a single event with multiple recordings. This approach may be useful for future source  
39 studies of local seismic swarms and clusters.  
40  
41  
42  
43  
44  
45  
46  
47  
48  
49  
50

51 The three procedures provide independent results that are consistent with a stable source mechanism for  
52 most microseismic events. The mechanism is dominated by a thrust faulting regime with faults oriented  
53 NW-SE, and dipping around 35-55°, likely related to a preferential orientation of pre-existing fault  
54  
55  
56  
57  
58  
59  
60

1  
2  
3 structures. As an interesting by-product, we show that the source radiation pattern significantly controls  
4  
5 the detection capability of a seismic station.  
6  
7

## 8 9 10 **ACKNOWLEDGEMENTS**

11 This work was undertaken with the financial support of the French Ministry of Mines, the Lorraine  
12 Region, and the French Ministry of Environment. S.C. was funded by the German BMBF MINE project  
13 (Grant of project BMBF03G0737A). We thank Solvay for cooperation and making available the technical  
14 and human resources involved. The authors also thank their GISOS partners for their collaboration. For  
15 many processing and imaging steps, the Kiwi tools (Heimann 2011; Heimann et al. 2014) and the OBSPY  
16 tools ([Beyreuther et al. 2010](#)) were used. Radiation pattern imaging was done by means of the Matlab  
17 codes provided by Kwiatek & Ben-Zion (2013) and SEIZMO (<http://epsc.wustl.edu/~ggeuler/codes/m/seizmo/>).  
18  
19  
20  
21  
22  
23  
24  
25  
26  
27  
28  
29  
30

## 31 **REFERENCES**

- 32  
33 [Aki, K., 1967. Scaling law of seismic spectrum, Journal of Geophysical Research, 72\(4\), 1217-1231.](#)  
34  
35  
36  
37  
38 [Andre, G., 2003. Characterisation of the meso-cenozoic deformations and fluid circulations in the eastern](#)  
39 [Paris basin, Applied geology. Universite Henri Poincare - Nancy I, 2003. French., Nancy, France.](#)  
40  
41  
42  
43  
44 [Bardainne, T., Dubos-Sallee, N., Senechal, G., Gaillot, P., & Perroud, H., 2008. Analysis of the induced](#)  
45 [seismicity of the Lacq gas field \(southwestern France\) and model of deformation, Geophysical Journal](#)  
46 [International, 172\(3\), 1151-1162.](#)  
47  
48  
49  
50  
51  
52  
53 [Beyreuther, M., Barsch, R., Krischer, L., Megies, T., Behr, Y., & Wassermann, J., 2010. Obspy: A python](#)  
54 [toolbox for seismology, Seismological Research Letters, 81\(3\), 530-533.](#)  
55  
56  
57  
58  
59  
60



1  
2  
3 [Boore, D. M. & Boatwright, J., 1984. Average body-wave radiation coefficients, Bulletin of the](#)  
4 [Seismological Society of America, 74\(5\), 1615-1621.](#)

5  
6  
7  
8  
9  
10 [Brune, J. N., 1970. Tectonic stress and the spectra of seismic shear waves from earthquakes, Journal of](#)  
11 [Geophysical Research, 75\(26\), 4997-5009.](#)

12  
13  
14  
15  
16 [Cesca, S., Buforn, E., & Dahm, T., 2006. Moment tensor inversion of shallow earthquakes in Spain,](#)  
17 [Geophysical Journal International. 166, 839-854.](#)

18  
19  
20  
21  
22  
23 [Contrucci, I., Klein, E., Bigarré, P., Lizeur, A., Lomax, A. & Bennani, M., 2010. Management of Post-](#)  
24 [mining Large-scale Ground Failures: Blast Swarms Field Experiment for Calibration of Permanent](#)  
25 [Microseismic Early-warning Systems. Pure and applied Geophysics, 167, 43-62.](#)

26  
27  
28  
29  
30  
31 [Contrucci, I., Klein, E., Cao, N., Daupley, X., & Bigarré, P., 2011. Multi-parameter monitoring of a](#)  
32 [solution mining cavern collapse: First insight of precursors, Comptes Rendus Geoscience, 343\(1\), 1-10.](#)

33  
34  
35  
36  
37  
38 [Cornet, F. H. & Rockel, T., 2012. Vertical stress profiles and the significance of stress decoupling,](#)  
39 [Tectonophysics, 581, 193-205.](#)

40  
41  
42  
43  
44 [Couffin, S., Bigarré, P., Bennani, M. & Josien, J.P., 2003. Permanent real time microseismic monitoring](#)  
45 [of abandoned mines for public safety. in Field Measurements. In Geomechanics eds Frank, M. & Francis,](#)  
46 [T., Oslo, Norway, pp. 437-444.](#)

47  
48  
49  
50  
51  
52  
53 [Dahm, T., & Krüger, F., 1999. Higher-degree moment tensor inversion using far-field broad-band](#)  
54 [recordings: theory and evaluation of the method with application to the 1994 Bolivia deep earthquake.](#)  
55 [Geophysical Journal International 137, 35–50.](#)

1  
2  
3  
4  
5 Dahm, T., Manthei, G., & Eisenblatter, J., 1999. Automated moment tensor inversion to estimate source  
6 mechanisms of hydraulically induced micro-seismicity in salt rock, *Tectonophysics*, 306(1), 1-17.  
7  
8

9  
10  
11 Daupley, X., Cuche, H., Ghoreychi, M., 2005. Typology of strata movement related to old solution  
12 mining of salt at Sarralbe (Lorraine, France), in *Proceedings of the symposium Post mining 2005*.  
13  
14

15  
16  
17  
18 Didier, C., 2008. The french experience of post-mining management, in *Symposium Post-Mining 2008*.  
19 Feb 2008, Nancy, France.  
20  
21

22  
23  
24 Domingues A., Custodio, S., & Cesca, S., 2013. Waveform Inversion of Small to Moderate Earthquakes  
25 Located Offshore Southwest Iberia, *Geophysical Journal International*. 192, 248-259.  
26  
27

28  
29  
30  
31 Eisner, L., Thornton, M., Griffin, J., et al., 2011. Challenges for microseismic monitoring, in 2011 SEG  
32 Annual Meeting, Society of Exploration Geophysicists.  
33  
34

35  
36  
37  
38 Feustel, A. J., 1998. Seismic attenuation in underground mines : a comparative evaluation of methods and  
39 results, *Tectonophysics*, 289, 31-49.  
40  
41

42  
43  
44 Godano, M., Bardainne, T., Regnier, M., Deschamps, A., & Valette, M., 2012. Spatial and temporal  
45 evolution of a microseismic swarm induced by water injection in the Arkema-Vauvert salt field (southern  
46 France), *Geophysical Journal International*, 188(1), 274-292.  
47  
48

49  
50  
51  
52  
53 Gunzburger, Y. & Magnenet, V., 2014. Stress inversion and basement-cover stress transmission across  
54 weak layers in the Paris basin, France, *Tectonophysics*, 617, 44-57.  
55  
56

1  
2  
3 [Hardebeck, J. L., & Shearer, P. M., 2003. Using S/P amplitude ratios to constrain the focal mechanisms](#)  
4 [of small earthquakes. Bulletin of the Seismological Society of America. 93, 2434-2444.](#)  
5  
6

7  
8  
9  
10 [Heidbach, O., Tingay, M., Barth, A., Reinecker, J., Kurfess, D., & Muller, B., 2010. Global crustal stress](#)  
11 [pattern based on the world stress map database release 2008, Tectonophysics, 482\(1\), 3-15.](#)  
12  
13

14  
15  
16 Heimann, S., 2011. A robust method to estimate kinematic earthquake source parameters, Ph.D. thesis,  
17 Department of Geoscience, University Hamburg, Germany.  
18  
19

20  
21  
22 Heimann, S., Cesca, S., Kriegerowski, M., & Dahm, T., 2014. Synthetic seismogram web service and  
23 python tools, in EGU General Assembly Conference Abstracts, vol. 16, p. 10466.  
24  
25  
26

27  
28  
29 [Horner, R. & Hasegawa, H., 1978. The seismotectonics of southern Saskatchewan, Canadian Journal of](#)  
30 [Earth Sciences, 15\(8\), 1341-1355.](#)  
31  
32

33  
34  
35  
36 [Jousset, P. & Rohmer, J., 2012. Evidence for remotely triggered microearthquakes during salt cavern](#)  
37 [collapse. Geophysical Journal International, 191, 207-223.](#)  
38  
39

40  
41  
42 Julian, B. R., & G. R. Foulger, 1996. Earthquake mechanisms from linear-programming inversion of  
43 seismic-wave amplitude ratios. Bulletin of the Seismological Society of America. 86, 972–980.  
44  
45  
46

47  
48  
49 Kinscher, J., 2015. The analysis and interpretation of microseismicity induced by a collapsing solution  
50 mining cavity. A contribution for progress in hazard assessment of underground cavities, Ph.D. thesis,  
51 Universite Lorraine, Nancy, France.  
52  
53  
54  
55  
56  
57  
58  
59  
60

1  
2  
3 Kinscher, J., Bernard, P., Contrucci, I., Mangeney, A., Piguet, J., & Bigarré, P., 2015. Location of  
4  
5  
6  
7  
8  
9  
10  
11  
12  
13  
14  
15  
16  
17  
18  
19  
20  
21  
22  
23  
24  
25  
26  
27  
28  
29  
30  
31  
32  
33  
34  
35  
36  
37  
38  
39  
40  
41  
42  
43  
44  
45  
46  
47  
48  
49  
50  
51  
52  
53  
54  
55  
56  
57  
58  
59  
60

microseismic swarms induced by salt solution mining, *Geophysical Journal International*, 200, 337-362.

Kisslinger, C., 1980. Evaluation of S to P amplitude ratios for determining focal mechanisms from regional network observations. *Bulletin of the Seismological Society of America*. 70, 999–1014.

Klein, E., Contrucci, I., Daupley, X., Hernandez, O., Bigarré, P., Nadim, C., & Cauvin, L., 2008. Experimental monitoring of a solution-mining cavern in salt: Identifying and analyzing early-warning signals prior to collapse, in SMRI Fall Technical Conference, Galveston (Austin), Texas, USA, pp. 135-146.

Kosecki, A., Piwakowski, B., & Driad-Lebeau, L., 2010. High resolution seismic investigations in salt mining context, *Acta Geophysica*, 58(1), 15-33.

Kwiatek, G. & Ben-Zion, Y., 2013. Assessment of p and s wave energy radiated from very small shear-tensile seismic events in a deep south african mine, *Journal of Geophysical Research: Solid Earth*, 118(7), 3630-3641.

Lebert, F., Bernardie, S. & Mainsant, G., 2011. Hydroacoustic monitoring of a salt cavity: an analysis of precursory events of the collapse, *Natural Hazards and Earth System Sciences*, 11(9).

Maghsoudi, S., S. Cesca, S. Hainzl, D. Kaiser, D. Becker, & T. Dahm, 2013. Improving the estimation of detection probability and magnitude of completeness in strongly heterogeneous media, an application to AE emission, *Geophysical Journal International*, 193, 3, 1556-1569.

1  
2  
3 Malovichko, D., Kadebskaya, O., Shulakov, D. Y., & Butyrin, P., 2010. Local seismologic observations  
4 of karst processes, *Izvestiya, Physics of the Solid Earth*, 46(1), 57-73.  
5  
6  
7

8  
9  
10 Mercerat, E., 2007. Sismicite induite et modelisation numerique de l'endommagement dans un context  
11 salin, Ph.D. thesis, LAEGO, Institut National Polytechnique de Lorraine, France.  
12  
13

14  
15  
16 Mercerat, E., Driad-Lebeau, L., & Bernard, P., 2010. Induced seismicity monitoring of an underground  
17 salt cavern prone to collapse, *Pure and Applied Geophysics*, 167(1), 5-25.  
18  
19  
20

21  
22  
23 Plenkers, K., Schorlemmer, D. & Kwiatak, G. the JAGURAS Group, 2011. On the probability of  
24 detecting Picoseismicity, *Bulletin of the Seismological Society of America*, 101, 2539–2591.  
25  
26  
27

28  
29 Plesinger, A., Hellweg, M. & Seidl, D., 1986. Interactive high-resolution polarization analysis of  
30 broadband seismograms. *J. Geophysics*, 59, 129-139.  
31  
32  
33

34  
35  
36 Rau, R.-J., F. T. Wu, & T.-C. Shin (1996). Regional network focal mechanism determination using 3D  
37 velocity model and SH/P amplitude ratio. *Bulletin of the Seismological Society of America*. 86, 1270–  
38 1283.  
39  
40  
41

42  
43  
44 Rydelek, P. & Sacks, I., 1989. Testing the completeness of earthquake catalogues and the hypothesis of  
45 self-similarity, *Nature*, 337(6204), 251-253.  
46  
47  
48

49  
50  
51 Schaff, D. P. & Waldhauser, F., 2005. Waveform cross-correlation-based differential travel-time  
52 measurements at the Northern California Seismic Network. *Bulletin of the Seismological Society of*  
53 *America*, 95, 2446-2461.  
54  
55  
56

1  
2  
3 [Schorlemmer, D. & Woessner, J., 2008. Probability of detecting an earthquake Bulletin of the](#)  
4 [Seismological Society of America, 98, 2103–2117.](#)  
5  
6

7  
8  
9  
10 Sen, A. T., Cesca, S., Bischof, M., Meier, T., & Dahm, T., 2013. Automated full moment tensor  
11 inversion of coal mining-induced seismicity, *Geophysical Journal International*, pp. 1267-1281.  
12  
13

14  
15  
16 [Souley, M., Mercerat, D., Driad-Lebeau, L., Bernard, P., et al., 2008. A large scale continuum discrete](#)  
17 [numerical modelling: Application to overburden damage of a salt cavern, in Post-Mining 2008.](#)  
18 [Symposium Proceedings.](#)  
19  
20  
21

22  
23  
24 [Stabile, T., Iannaccone, G., Zollo, A., Lomax, A., Ferulano, M., Vetri, M., & Barzaghi, L., 2013. A](#)  
25 [comprehensive approach for evaluating network performance in surface and borehole seismic monitoring,](#)  
26 [Geophysical Journal International, 192, 793-806.](#)  
27  
28  
29

30  
31  
32  
33 Vavrycuk, V., 2001. Inversion for parameters of tensile earthquakes, *Journal of Geophysical Research:*  
34 *Solid Earth*, 106, 16339-16355.  
35  
36

37  
38  
39  
40 [Walter, W. R. & Brune, J. N., 1993. Spectra of seismic radiation from a tensile crack, Journal of](#)  
41 [Geophysical Research: Solid Earth. 98\(B3\), 4449-4459.](#)  
42  
43  
44

45  
46 [Wang, R., 1999. A simple orthonormalization method for stable and efficient computation of Green's](#)  
47 [functions, Bulletin of the Seismological Society of America, 89\(3\), 733-741.](#)  
48  
49

50  
51  
52  
53 [Wileveau, Y., Cornet, F., Desroches, J., & Blumling, P., 2007. Complete in situ stress determination in an](#)  
54 [argillite sedimentary formation, Physics and Chemistry of the Earth, 32\(8\), 866-878.](#)  
55  
56  
57  
58  
59  
60

1  
2  
3 Woessner, J. & Wiemer, S., 2005. Assessing the quality of earthquake catalogues: Estimating the  
4 magnitude of completeness and its uncertainty, *Bulletin of the Seismological Society of America*, 95,  
5 684-698.  
6  
7  
8  
9

10  
11 Wust-Bloch, G. H. & Joswig, M., 2006. Pre-collapse identification of sinkholes in unconsolidated media  
12 at Dead Sea area by nanoseismic monitoring (graphical jackknife location of weak sources by few, low-  
13 SNR records), *Geophysical Journal International*, 167(3), 1220-1232.  
14  
15  
16  
17  
18  
19  
20  
21  
22  
23  
24  
25  
26  
27  
28  
29  
30  
31  
32  
33  
34  
35  
36  
37  
38  
39  
40  
41  
42  
43  
44  
45  
46  
47  
48  
49  
50  
51  
52  
53  
54  
55  
56  
57  
58  
59  
60

## APPENDIX A: CONSTRAINTS ON SEISMIC VELOCITIES AND $Q$ FACTORS

20 events of *dataset 1* were used to determine seismic velocities and attenuation factors for P and S waves. Precise estimation of the elastic parameters is important for accurate Green's functions, required for seismic source inversion. The 20 events occurred throughout the March-May 2008 microseismic crisis and were located directly below stations 6 1-3 (Fig. 1a). Their location was inferred using P wave polarization angles and manually picked S minus P travel time differences.

The major benefit of choosing these events is that their P and S waveforms are remarkably similar among stations 6.1-3 (Fig. A1), where P waves are most dominant on the vertical components and S waves on the horizontal ones (Fig. 3). The waveform similarity allows a precise estimate on travel time differences using cross-correlation (e.g. Schaff & Waldhauser, 2005). Then, seismic velocities for P and S waves between the stations 6 1-3 were calculated using the differential travel times and the differences in receiver depth for each station pair. The seismic velocities are calculated as the mean for all 20 events, with uncertainty estimated by the standard deviation (Table A1).

The velocities were then used to constrain the  $Q$  factors, assuming an attenuation law accounting for intrinsic attenuation and geometric spreading ( $1/r$ ) (e.g. Kinscher et al. 2015) and by applying the spectral amplitude ratio technique (e.g. Feustel 1998).  $Q$  factors were determined from the slope of the linear regression of the logarithmic amplitude spectral ratios for P and S waves for the 20 events. The final  $Q_P$  and  $Q_S$  values and uncertainties (Table A1) are average and standard deviation, respectively.

The elastic parameters show interesting features. (i) The resolved P wave velocity of 1.69 km/s between 6.1 and 6.2 is consistent with results from high resolution seismic tomography (Kosecki et al. 2010), which is very low for the uppermost sedimentary layers (0- 62 m depth). Such a low P velocity is likely related to the presence of a groundwater aquifer at  $\sim 30$  m depth (e.g. Kinscher 2015). (ii) The S wave velocities and  $Q$  factors are almost two times smaller than for P waves at each depth (Table A1), documenting abnormally high S wave attenuation. Abnormally strong S attenuation was already suggested by Kinscher et al. (2015), who observed a significant decrease in S/P amplitude ratios for higher frequencies. (iii) Even though the cavity structure was about to change during the 2008



1  
2  
3  
4  
5  
6  
7  
8  
9  
10  
11  
12  
13  
14  
15  
16  
17  
18  
19  
20  
21  
22  
23  
24  
25  
26  
27  
28  
29  
30  
31  
32  
33  
34  
35  
36  
37  
38  
39  
40  
41  
42  
43  
44  
45  
46  
47  
48  
49  
50  
51  
52  
53  
54  
55  
56  
57  
58  
59  
60

microseismic crisis , no systematic velocity nor  $Q$  factor changes were observed in the overburden from analysis of the 20 events.

1  
2  
3  
4  
5  
6  
7  
8  
9  
10  
11  
12  
13  
14  
15  
16  
17  
18  
19  
20  
21  
22  
23  
24  
25  
26  
27  
28  
29  
30  
31  
32  
33  
34  
35  
36  
37  
38  
39  
40  
41  
42  
43  
44  
45  
46  
47  
48  
49  
50  
51  
52  
53  
54  
55  
56  
57  
58  
59  
60

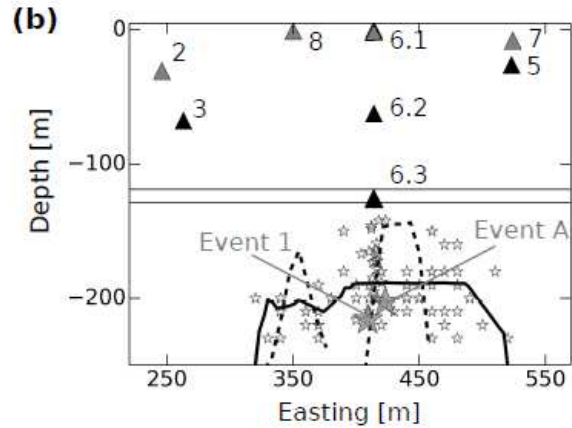
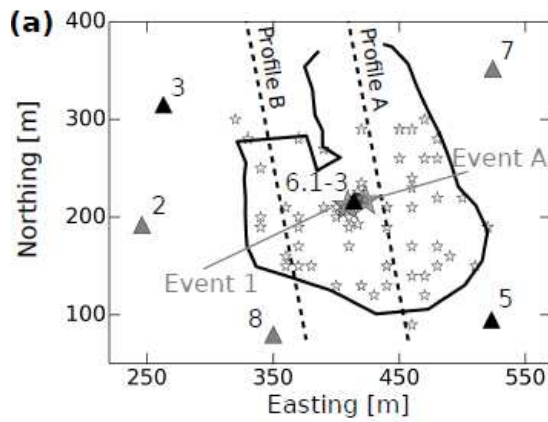
**Table 1.** Improved version of the velocity model introduced by Mercerat et al. (2010), used for synthetic seismogram calculations. See Appendix A for the procedure of elastic parameter estimation.

Geological layers	Depth	VP	VP/VS	QP	QS	$\rho$
	[m]	[km/s]				[g/cm <sup>3</sup> ]
Marls and sands	0 - 60	1.69	2.3	10	10	2.5
Marls and sands	60 - 118	2.9	2.3	40	20	2.5
Dolomite	118 - 130	5.0	1.73	40	20	2.89
Anhydritic marls	130 - 185	4.0	1.83	40	20	2.657
Salt	185 - 300	4.2	1.8	40	20	2.15

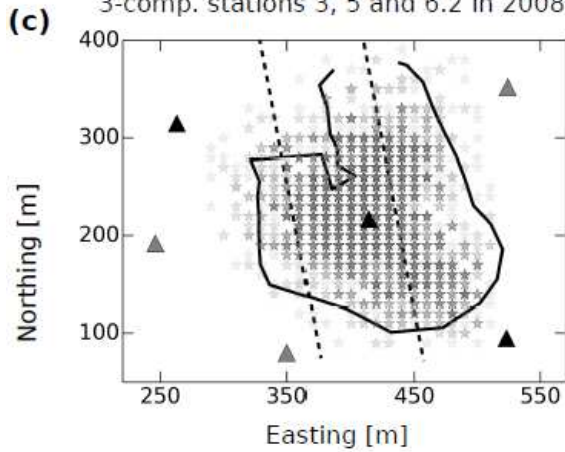
1  
2  
3  
4  
5  
6  
7  
8  
9  
10  
11  
12  
13  
14  
15  
16  
17  
18  
19  
20  
21  
22  
23  
24  
25  
26  
27  
28  
29  
30  
31  
32  
33  
34  
35  
36  
37  
38  
39  
40  
41  
42  
43  
44  
45  
46  
47  
48  
49  
50  
51  
52  
53  
54  
55  
56  
57  
58  
59  
60

**Dataset 1:**

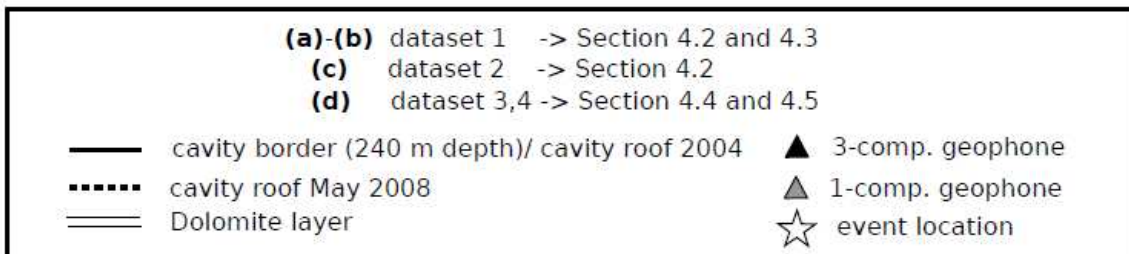
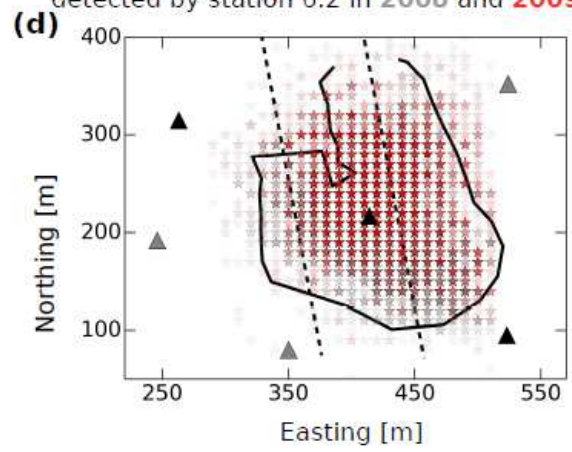
74 events (classically located)



**Dataset 2:** ~6000 events detected by 3-comp. stations 3, 5 and 6.2 in 2008

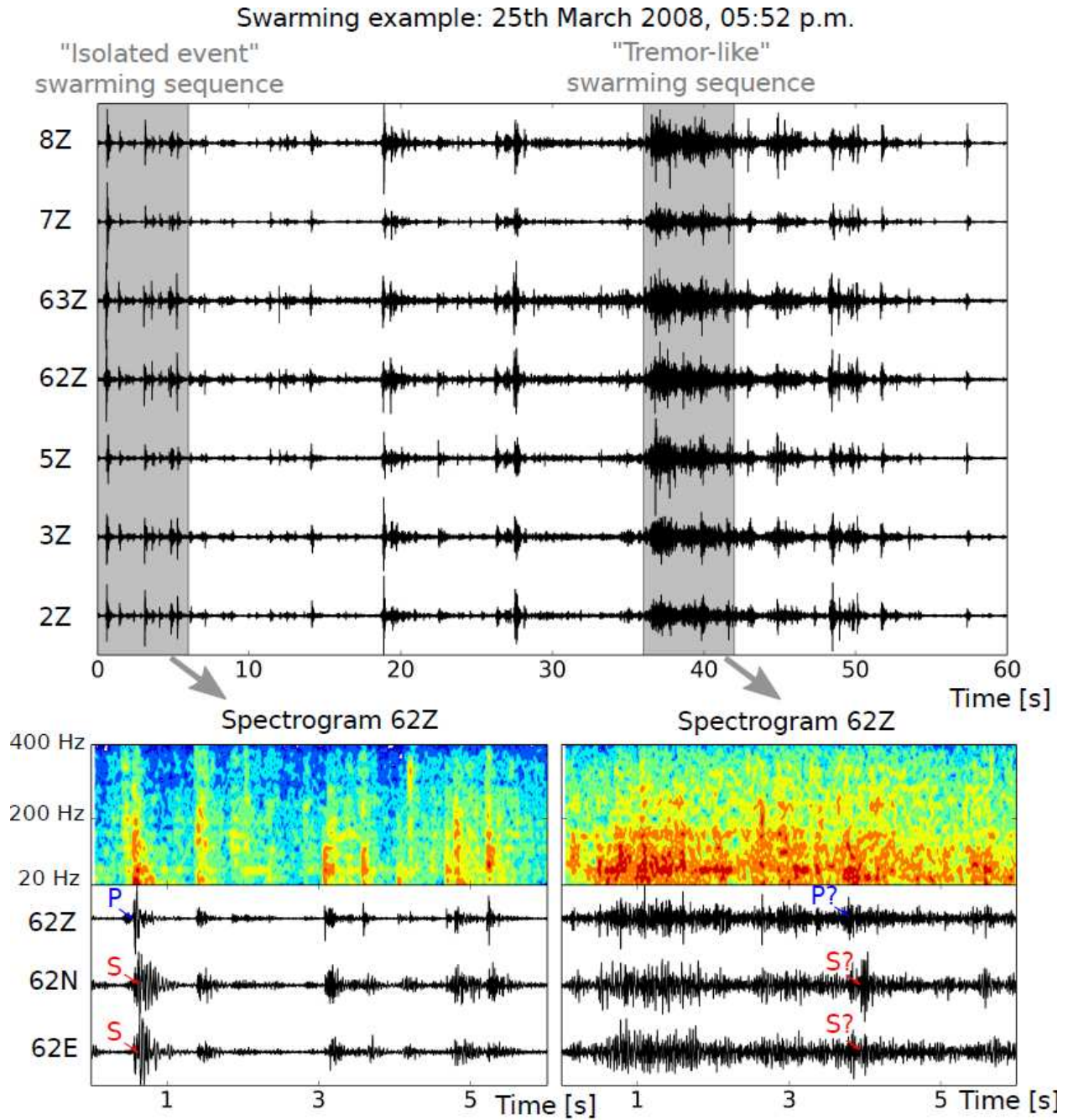


**Dataset 3 and 4:** ~15,000 and ~7,500 events detected by station 6.2 in 2008 and 2009



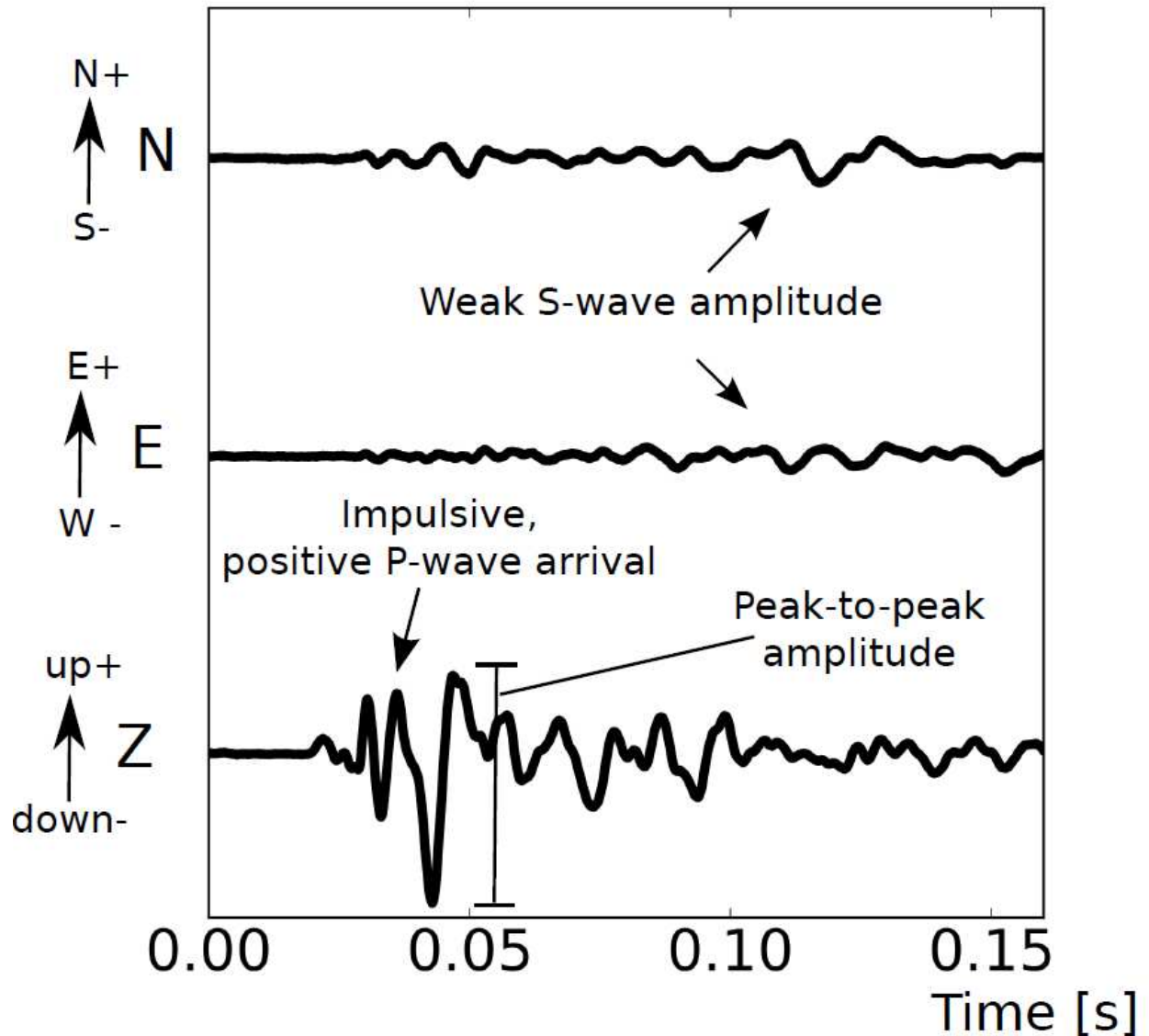
1  
2  
3 **Figure 1.** Study site setting and databases used in this study. (a)-(d) Eight of nine stations are shown;  
4  
5 Location of missing station 1 can be seen in Kinscher et al. (2015). (a)-(b) Dataset of 74 classically  
6  
7 located microseismic events examined in Section 2, and 4.1-3. 54 events were taken from Kinscher et al.  
8  
9 (2015) and 20 events were selected in this study (Appendix A), which have exclusively hypocenters  
10  
11 below stations 6 1-3. Profiles A and B represent the exploitation well profiles of the “channel and  
12  
13 drilling” solution mine where along fresh water is injected and brine extracted (e.g. Kinscher et al. 2015).  
14  
15 Northing and easting are given in meters relative to a reference point  $X = 892900$  and  $Y = 116000$  defined  
16  
17 by the Lambert 1 Nord (NTF, Paris) coordinate system. (c) Dataset of ~ 6,000 microseismic events of the  
18  
19 2008 crisis examined in Section 4.2. All events have been detected by three component stations 3, 5 and  
20  
21 6.2. (d) Dataset of ~15,000 events (~ 66%) of the 2008 crisis (gray stars) and ~7,500 events (~ 57%) of  
22  
23 the collapsing period in 2009 (red stars) (see text) detected by station 6.2. Locations in (c)-(d) were  
24  
25 determined by using the swarming adapted location approach of Kinscher et al. (2015).  
26  
27  
28  
29  
30  
31  
32  
33  
34  
35  
36  
37  
38  
39  
40  
41  
42  
43  
44  
45  
46  
47  
48  
49  
50  
51  
52  
53  
54  
55  
56  
57  
58  
59  
60

1  
2  
3  
4  
5  
6  
7  
8  
9  
10  
11  
12  
13  
14  
15  
16  
17  
18  
19  
20  
21  
22  
23  
24  
25  
26  
27  
28  
29  
30  
31  
32  
33  
34  
35  
36  
37  
38  
39  
40  
41  
42  
43  
44  
45  
46  
47  
48  
49  
50  
51  
52  
53  
54  
55  
56  
57  
58  
59  
60



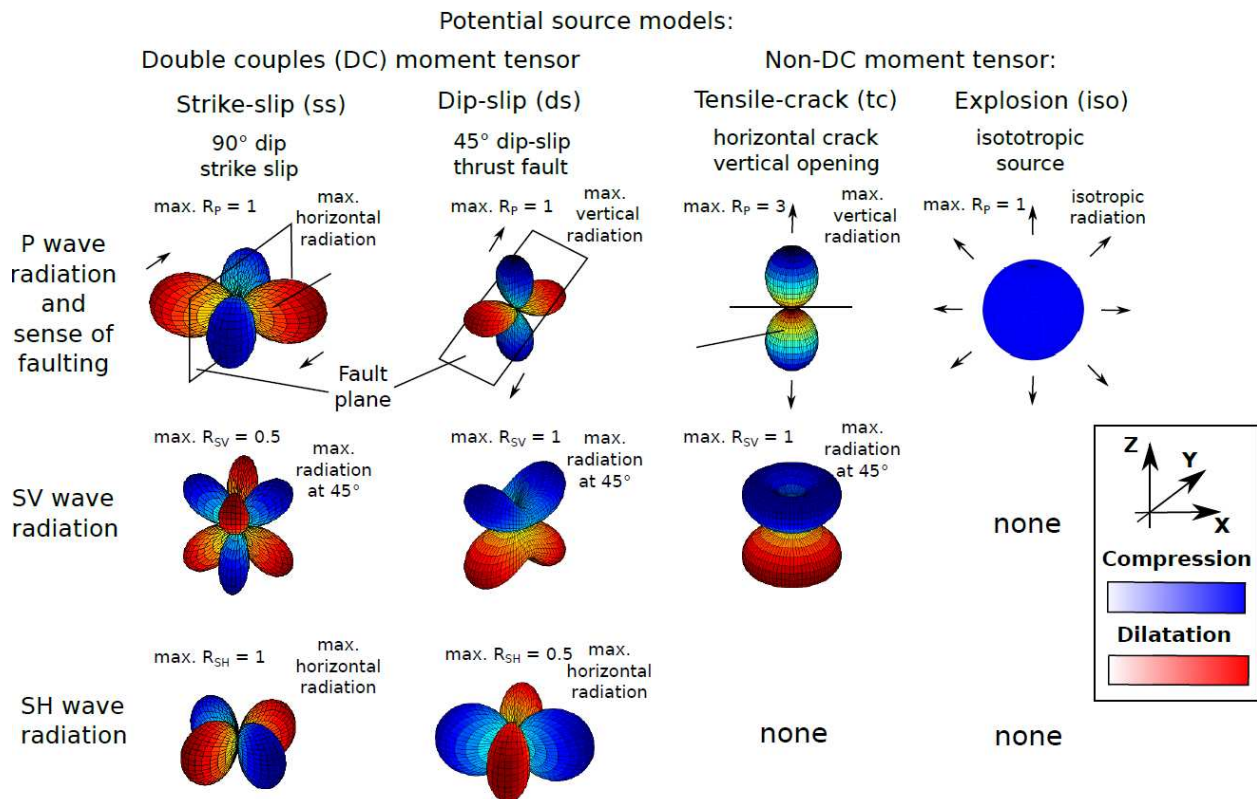
**Figure 2.** Example of a typical microseismic swarm example recorded during the microseismic crisis of 2008. The figure is taken from Kinscher et al. (2015).

## Microseismic event 1 below Station 6.2 (15th March 2008 01:09:10.31 a.m. UTC)

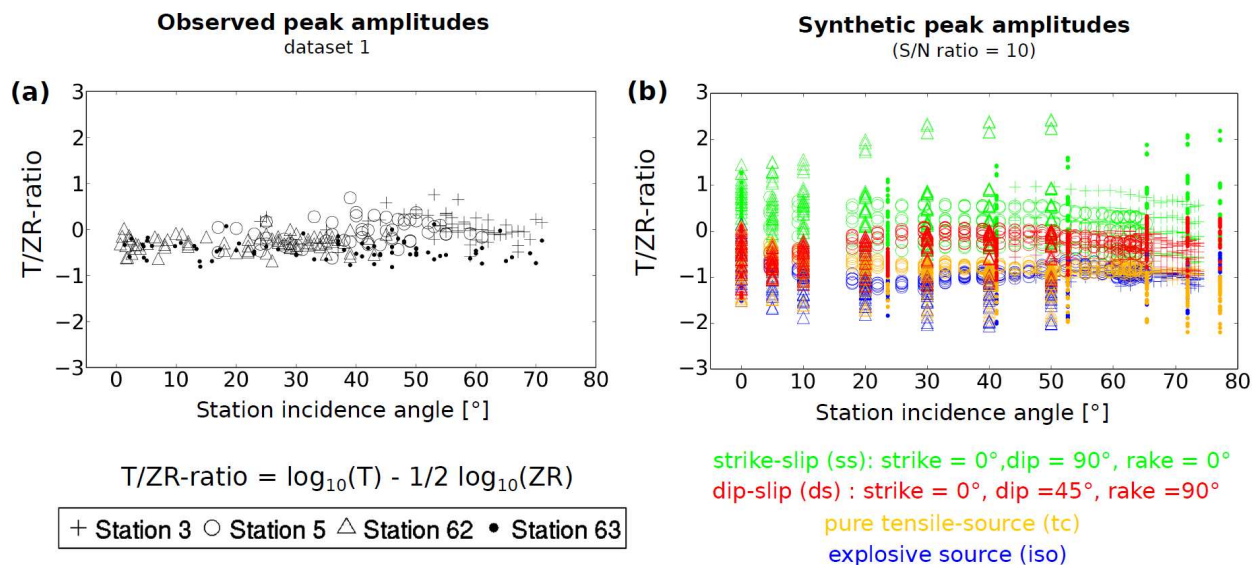


**Figure 3.** Event example called event 1 located below stations 6.1-3. Event 1 is associated with a short duration and a dominant P wave amplitude compared to S waves, what is consistently observed for all the 20 events located below stations 6 1-3 (Fig. 1, Appendix A).



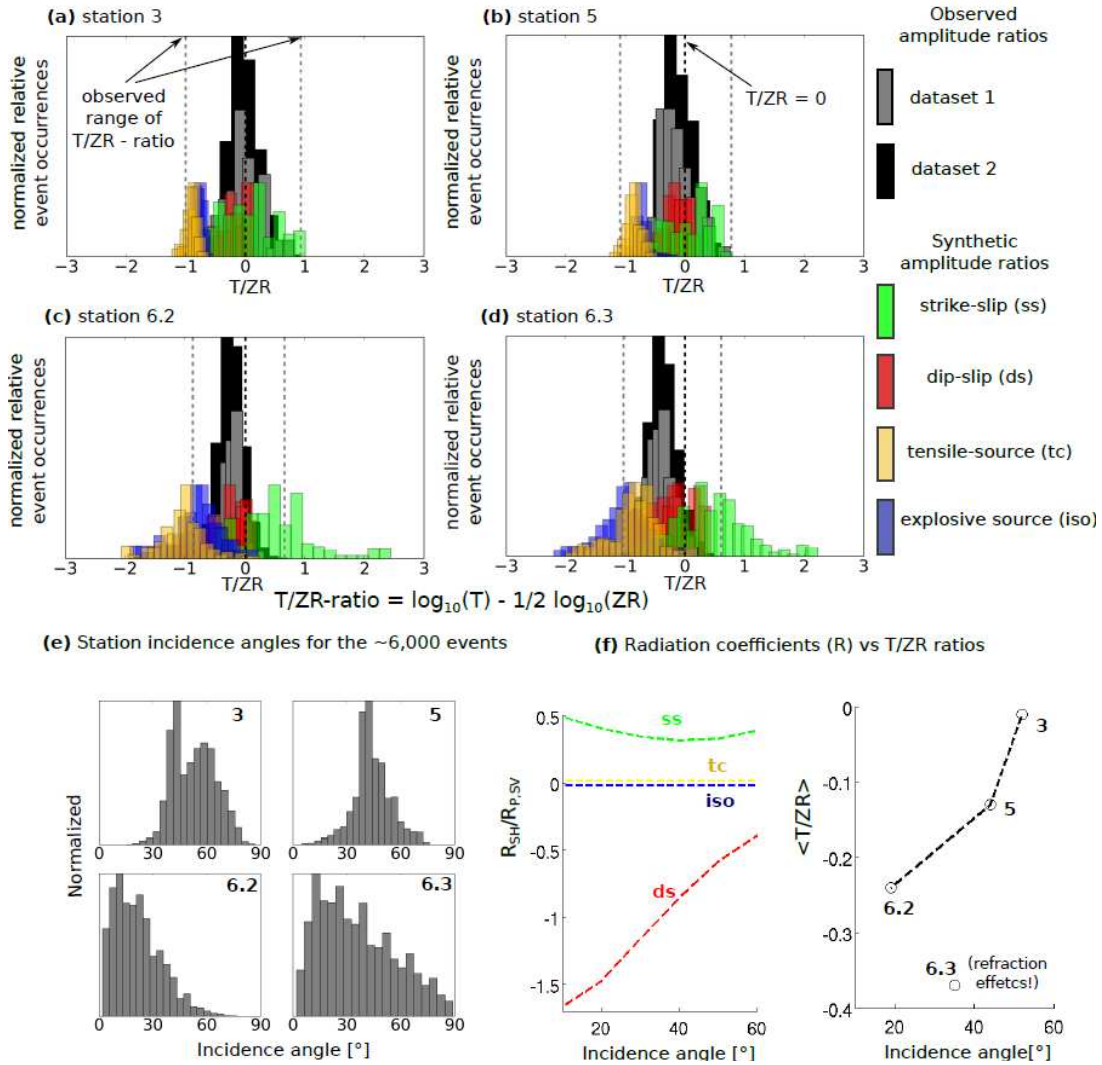


**Figure 4.** Radiation pattern and maximum radiation coefficients for SH ( $R_{SH}$ ), P ( $R_P$ ) and SV ( $R_{SV}$ ) waves for four potential source models following Boore & Boatwright (1984) for DC sources and Vavrycuk (2001) for a pure tensile source with a tensile angle of 90°.



**Figure 5.** Observed T/ZR peak-to-peak amplitude ratios. (a) Observed ratios for *dataset 1*. Station incidence angle were calculated based on the estimated source depths, which are relatively uncertain and need to be regarded with caution (Kinscher et al. 2015). (b) Synthetic T/ZR ratios calculated for four potential source models (Fig. 4), assuming 0° strike for the two DC models. Selected source locations considered for the synthetic T/ZR calculation were defined by a 20 m grid covering homogenously the entire cavity zone (Fig. 1) for a fixed source depth of 150 m, providing the full range of expected incidence angles 0 – 70° and backazimuth angles with 0-360° at stations 62 and 63.

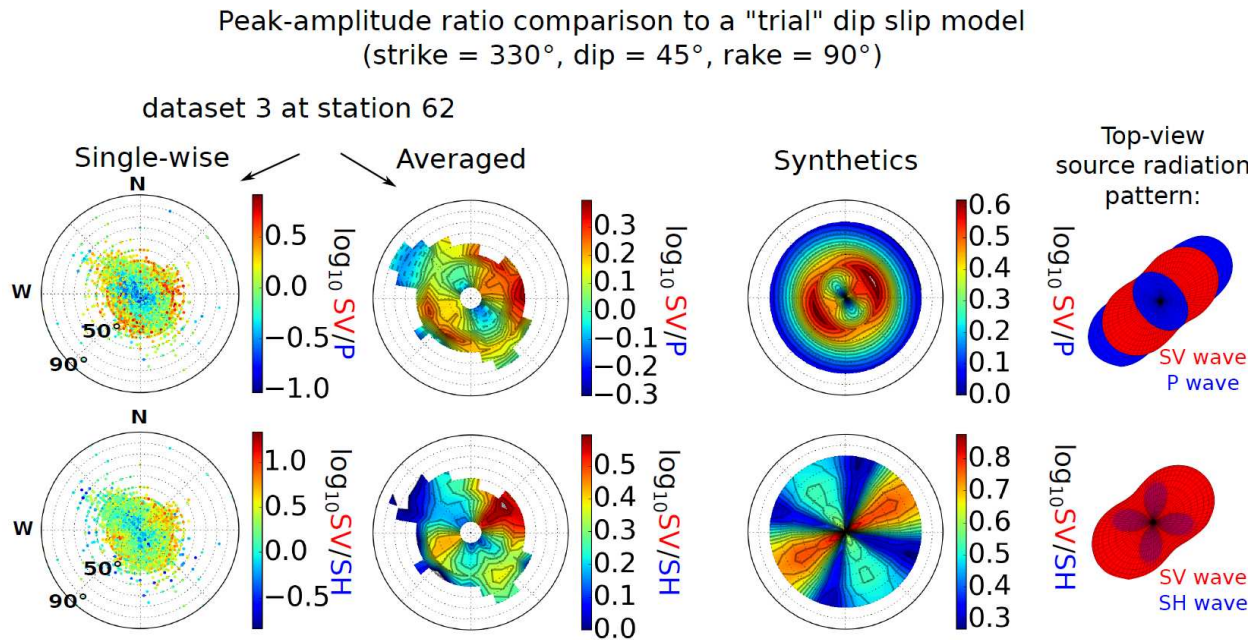




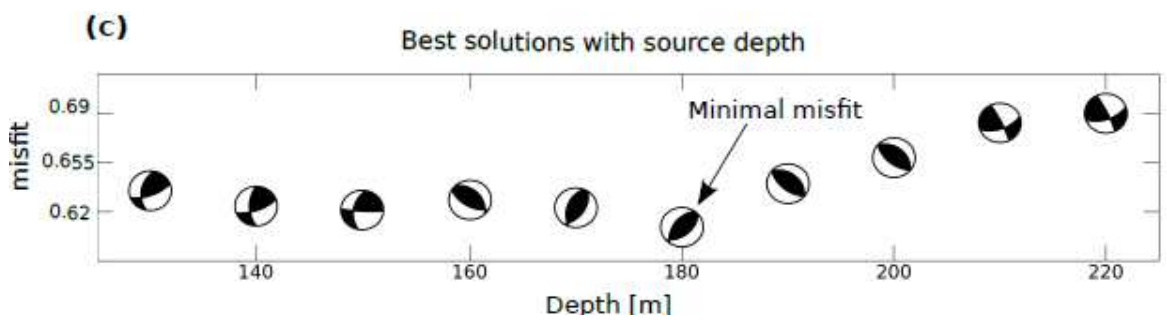
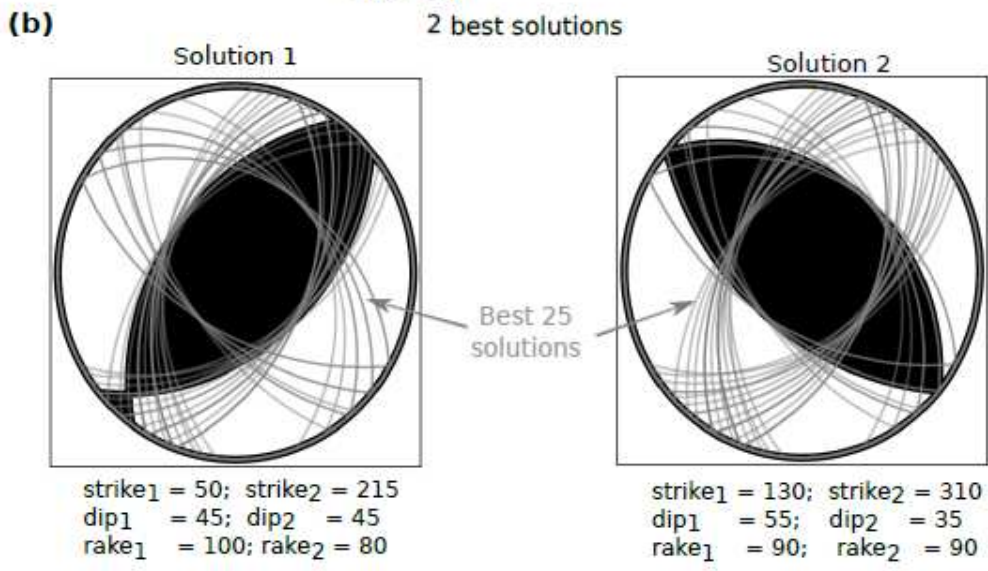
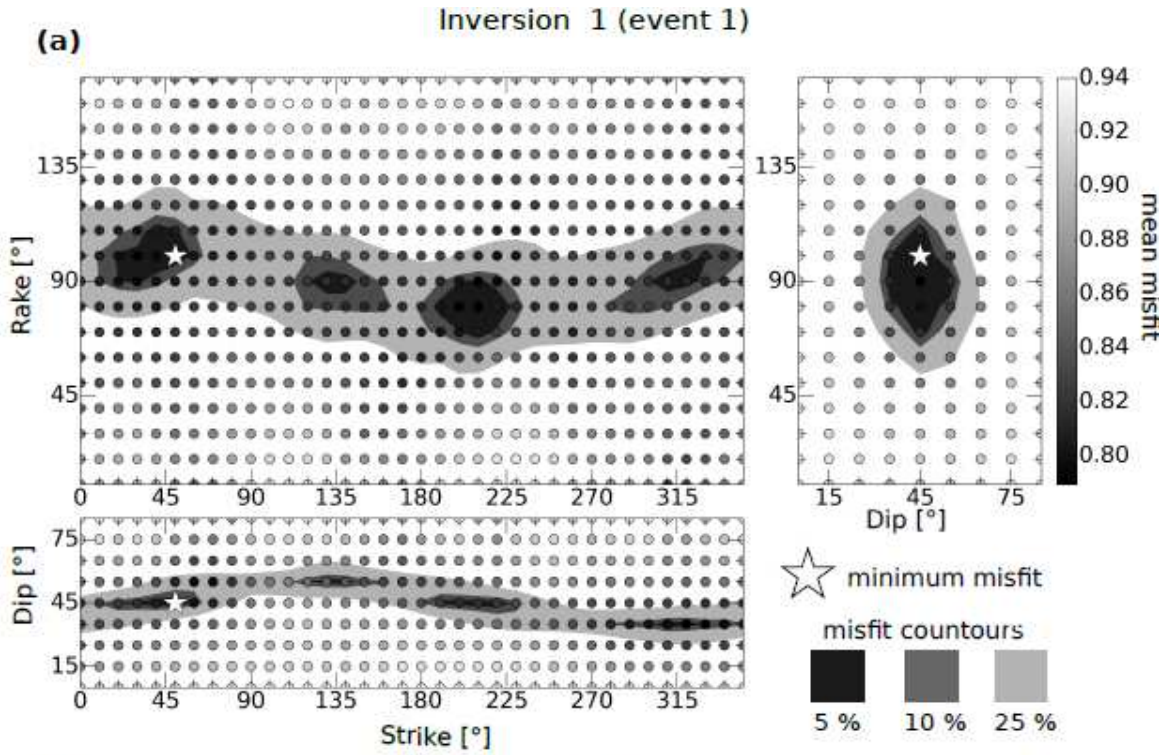
**Figure 6.** Observed and synthetic T/RZ amplitude ratios for station 3 (a) 5 (b) 62 (c) 63 (d) and the four potential source models (Fig. 4 and 5). Synthetic T/RZ ratios are the same as shown in Fig. 5. Backazimuth angles obtained from station 62 were generally used for the T/ZR amplitude ratio calculation at station 63. (e) Station incidence angles for the *dataset 2* (Fig. 1b) corresponding to source depths determined by Kinscher et al. (2015), which are uncertain (see text). (f) (left panel) The ratio  $R_{SH}/R_{P,SV}$  of the radiation coefficients for SH waves to P and SV waves (Boore & Boatwright 1984) is shown as a function of incidence angle for all four tested source models (thick dashed lines). The ratio was calculated by  $R_{SH}/R_{P,SV} = \log_{10}(R_{SH}) - 1/2 \log_{10}(R_P R_{SV})$  where bold marked radiation coefficients

1  
2  
3  
4  
5  
6  
7  
8  
9  
10  
11  
12  
13  
14  
15  
16  
17  
18  
19  
20  
21  
22  
23  
24  
25  
26  
27  
28  
29  
30  
31  
32  
33  
34  
35  
36  
37  
38  
39  
40  
41  
42  
43  
44  
45  
46  
47  
48  
49  
50  
51  
52  
53  
54  
55  
56  
57  
58  
59  
60

represent the average over the full backazimuth angle range (0-360°) for each incidence angle. (f) (right panel) The average T/ZR amplitude ratios for all stations (a)-(d) shown as a function of the average incidence angle (e).



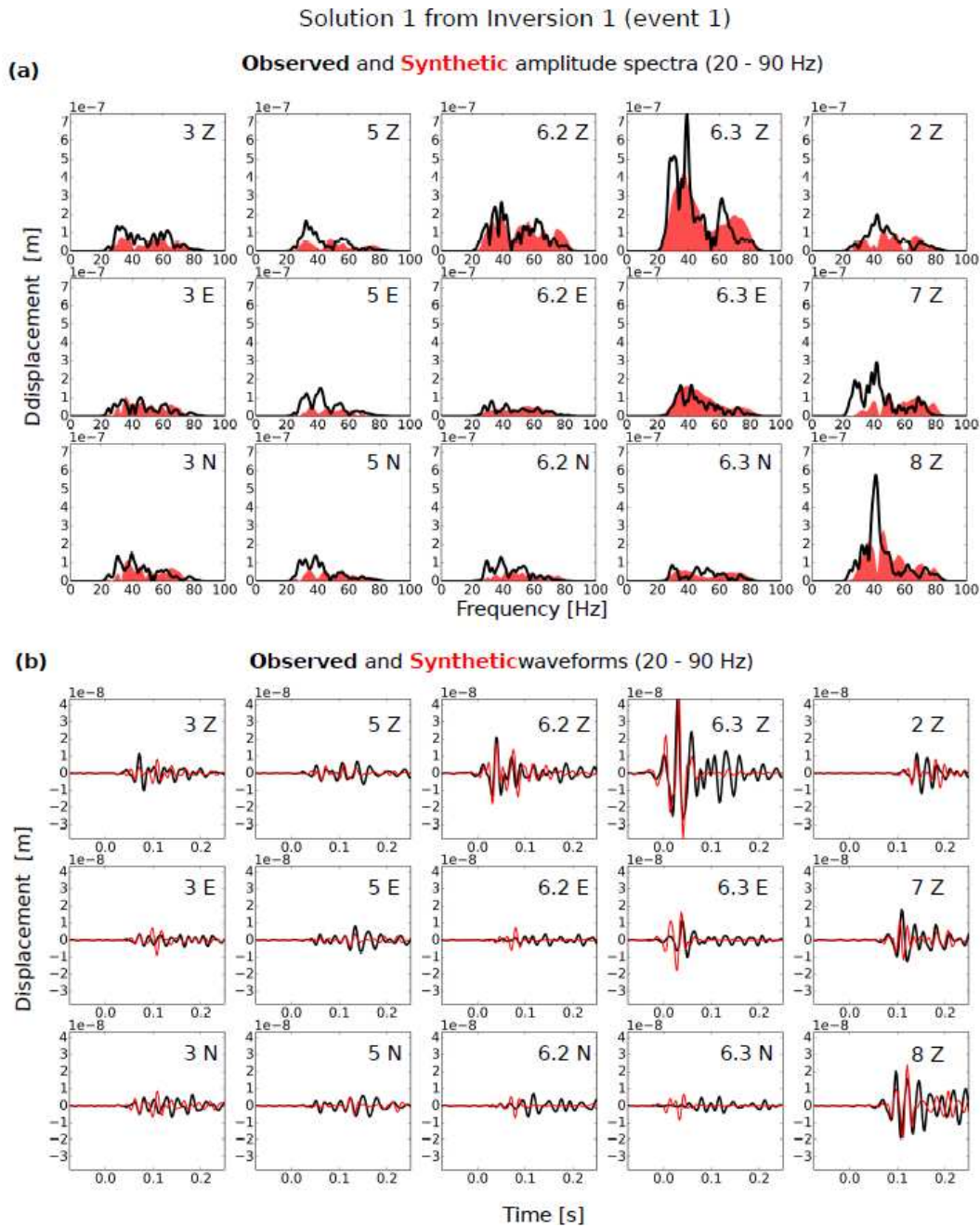
**Figure 7.** Body wave amplitude ratios for station 62 for the *dataset 3* compared to synthetic ratios calculated for a "trial" *ds* model. Station lower hemisphere plots and SV/P and SV/SH amplitude ratios shown as a function of the incidence and backazimuth polarization angles. From left to right, (i) observed individual amplitude ratios for each event (coloured points), contours of the observed (ii) and (iii) synthetic averaged amplitude ratios (colour shaded contours) smoothed for discrete incidence and backazimuth angles in 10° steps (see text). To simulate multipathing effects in the observed ratios as well as limited resolution of the used polarization angles ( $\pm 10^\circ$ ), the synthetic ratios were smoothed by averaging the amplitude ratios for 2° grid points to 10° grid points. Observed averaged amplitude ratios have been calculated for incidence angles  $\geq 10^\circ$  only, since backazimuth estimation is uncertain at these angles (Kinscher et al. 2015), and thus component rotation and wave amplitude determination becomes erroneous. (iv) The top view of radiation pattern (Fig. 4) for the "trial" *ds* model.



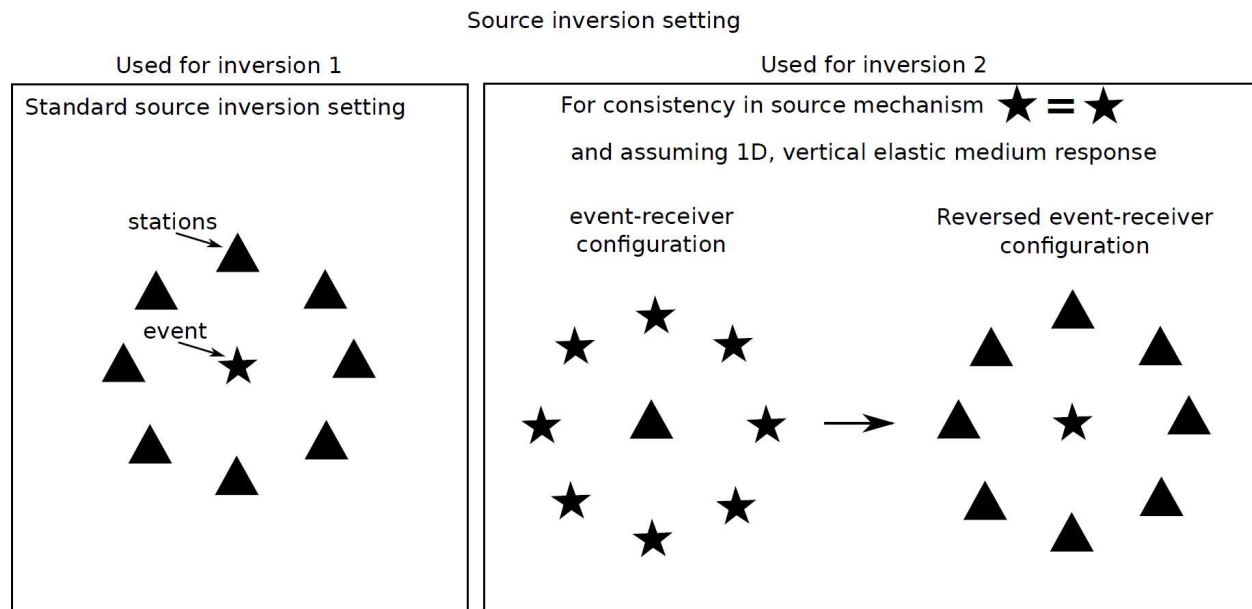
1  
2  
3  
4 **Figure 8.** Results for *inversion 1*. (a) Misfit contours represent the misfit increase in percentage for strike-  
5 rake (upper left panel), strike-dip (lower left panel) and dip-rake (upper right panel) 2-D modelling  
6 subspaces (see Section 4.3). Gray colours of grid points indicate the mean misfit (colorbar) for each grid  
7 point. (b) Two best solutions (beach-ball: compression = black, dilation = white) and 25 next best  
8 solutions (gray lines). (c) Misfit and best DC solutions as a function of assumed source depth. Misfits in  
9  
10 (a) and (b) are shown for the best fitting source depth of 180 m.  
11  
12  
13  
14  
15  
16  
17  
18  
19  
20  
21  
22  
23  
24  
25  
26  
27  
28  
29  
30  
31  
32  
33  
34  
35  
36  
37  
38  
39  
40  
41  
42  
43  
44  
45  
46  
47  
48  
49  
50  
51  
52  
53  
54  
55  
56  
57  
58  
59  
60

1  
2  
3  
4  
5  
6  
7  
8  
9  
10  
11  
12  
13  
14  
15  
16  
17  
18  
19  
20  
21  
22  
23  
24  
25  
26  
27  
28  
29  
30  
31  
32  
33  
34  
35  
36  
37  
38  
39  
40  
41  
42  
43  
44  
45  
46  
47  
48  
49  
50  
51  
52  
53  
54  
55  
56  
57  
58  
59  
60



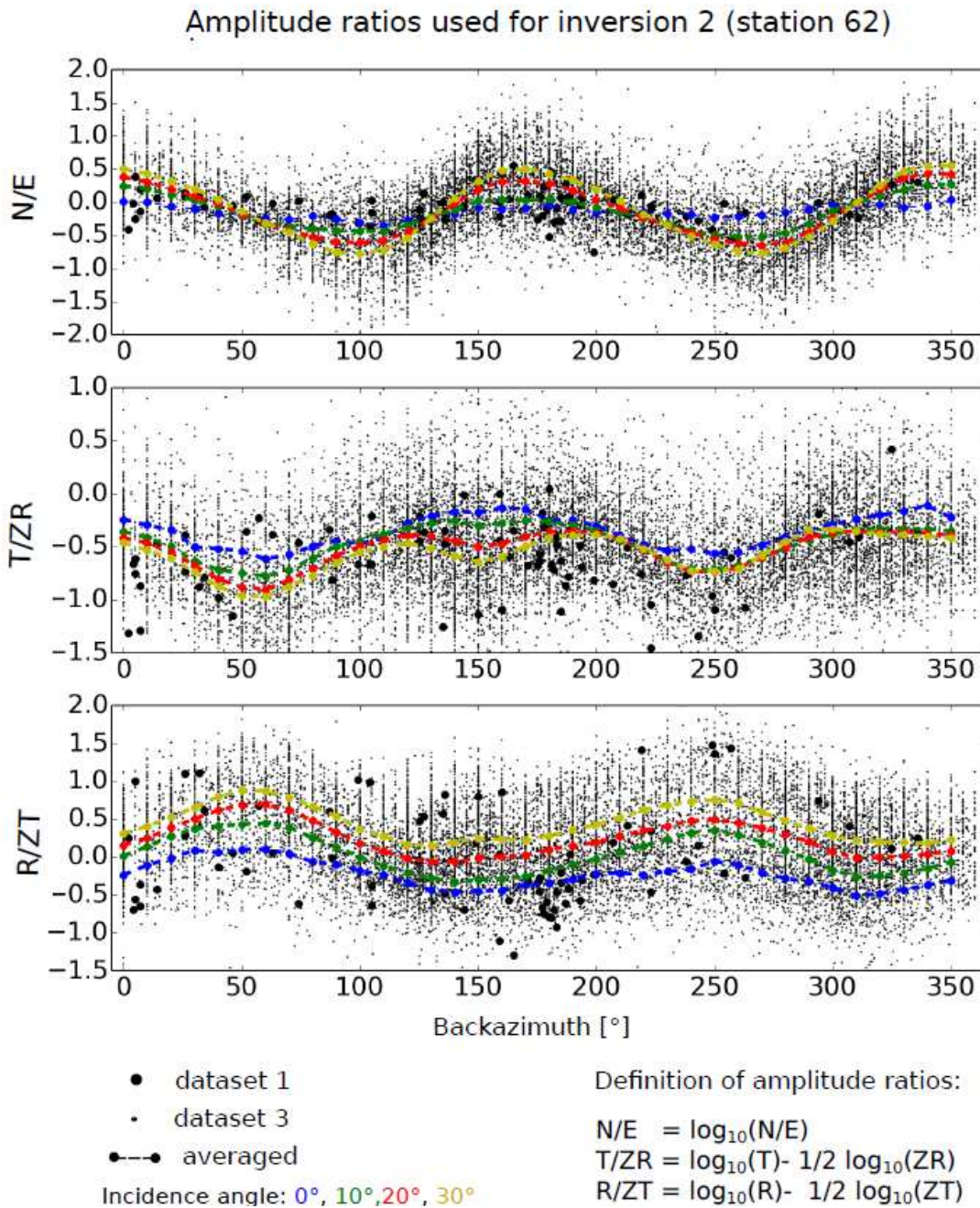


**Figure 9.** Amplitude spectra and waveforms for *solution 1* at 180 m depth of *inversion approach 1* with respect to event 1 (Fig. 1a). (a) Observed (black lines) and synthetic (red shaded areas) amplitude spectra. (b) Observed (black lines) and synthetic (red lines) waveforms.

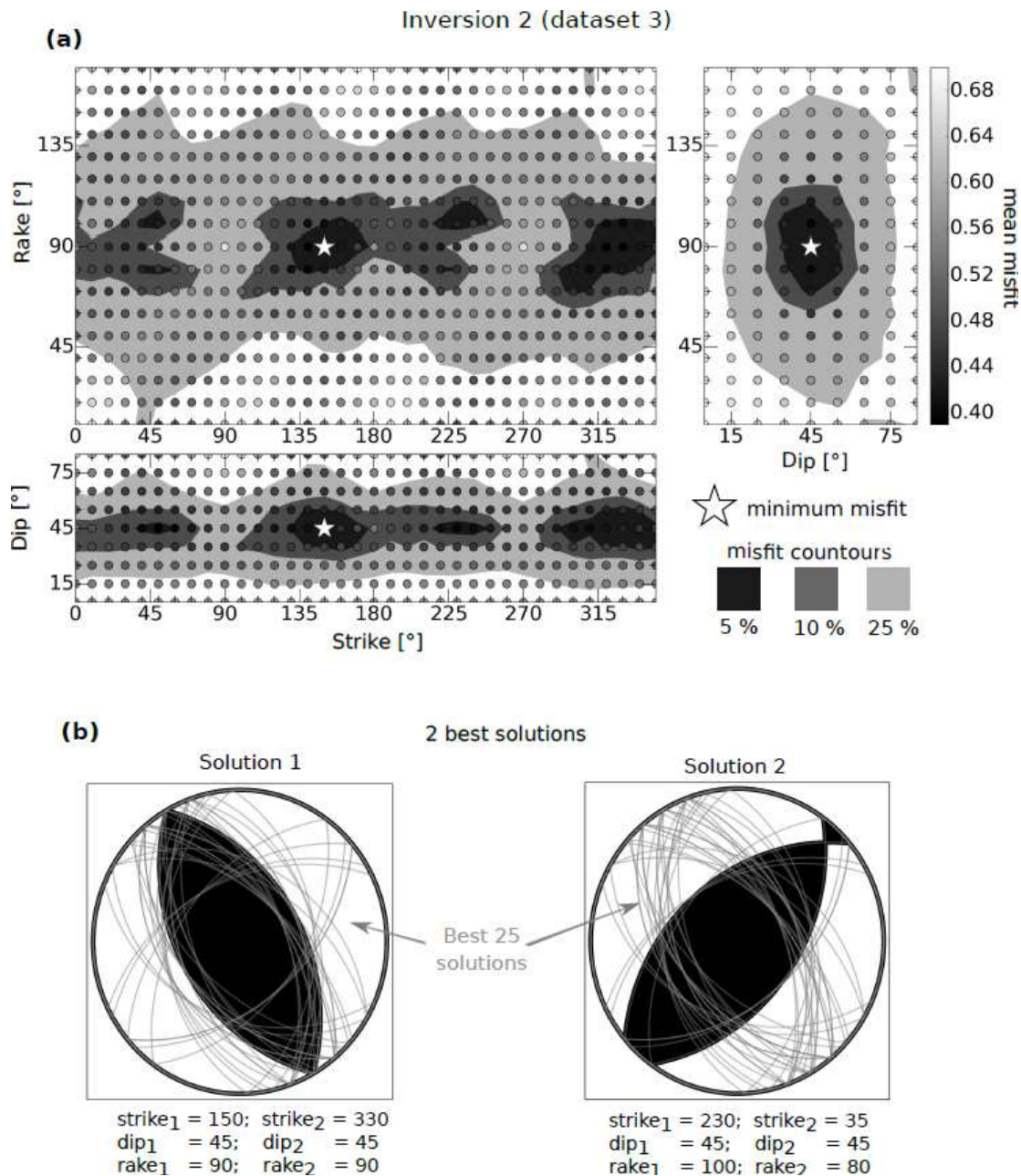


**Figure 10.** Inversion setting and source-receiver configurations for source *inversion approaches 1* and *2* presented in Sections 4.2-4. (right panel) Illustration of the reversed event-receiver source inversion setting. In the case of a single source mechanism for events A-G, these events can be considered as stations equivalents (A'-G') to determine their common source mechanism.

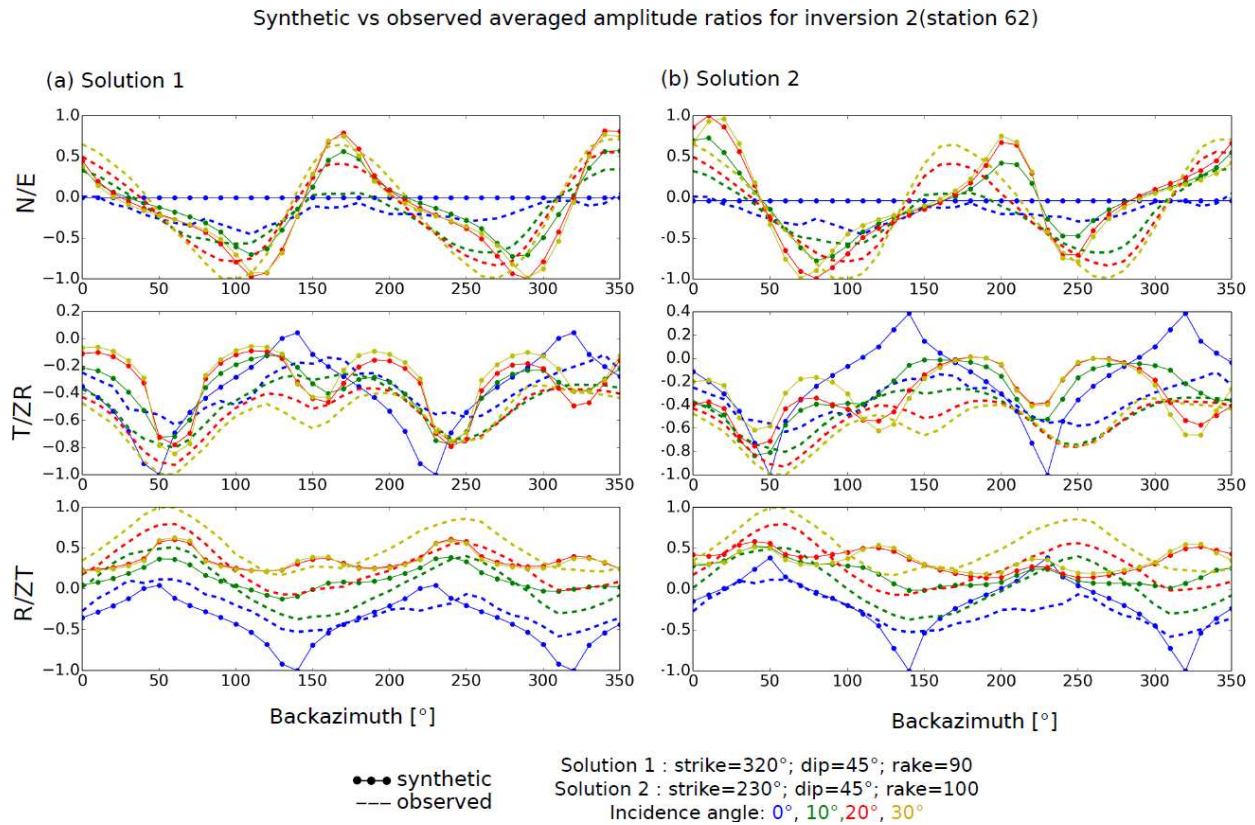




**Figure 11.** Observed amplitude ratios for station 62 used for *inversion 2*. Colored points indicate the average ratio with respect to a distinct grid of incidence and backazimuth angles. Each set of amplitude ratios, i.e. each type N/E, T/ZR and R/ZT, averaged or not, is normalized by division of its absolute maximum value (see text).

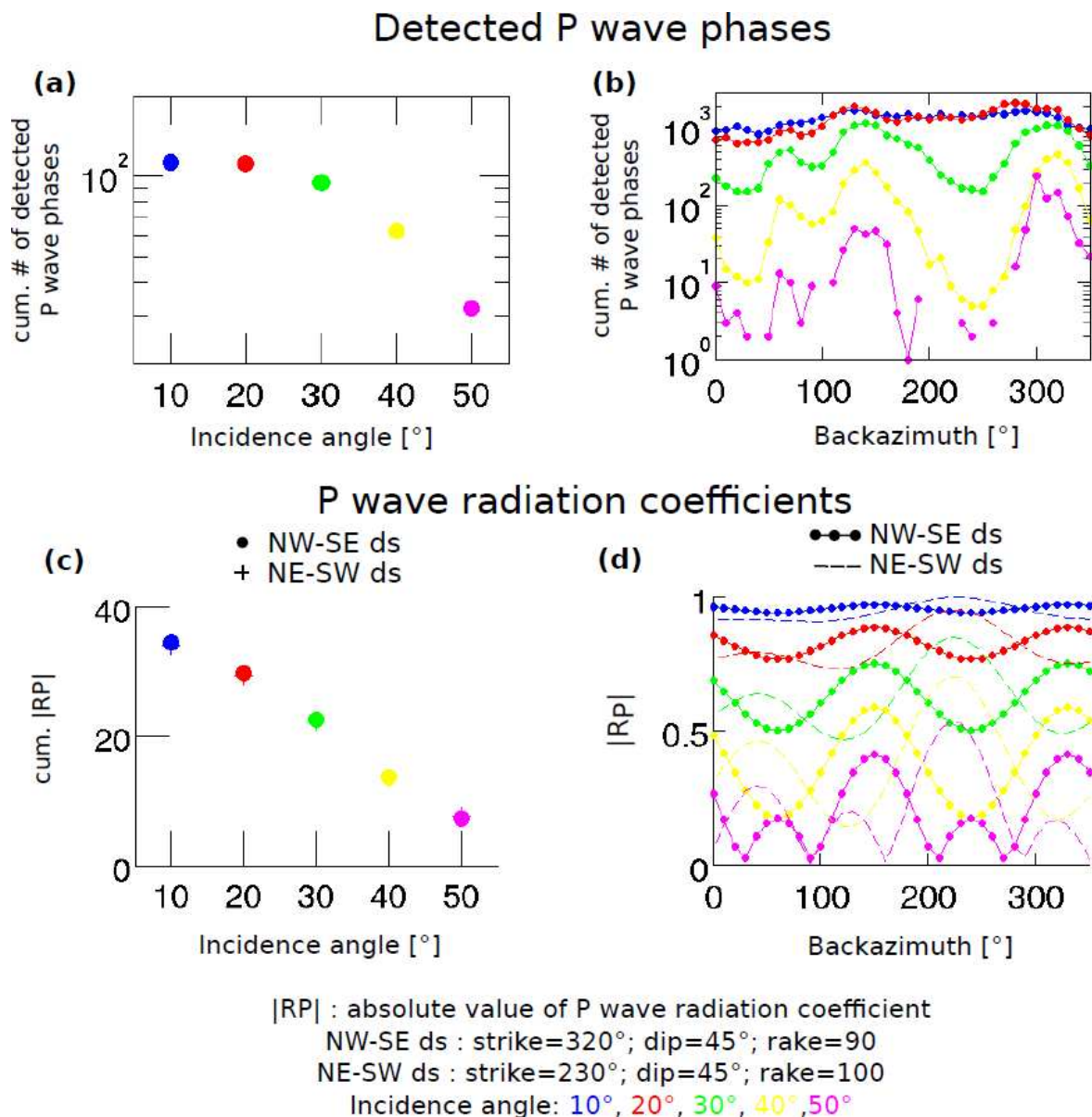


**Figure 12.** Results for *inversion 2*. (a) Misfit contours represent the misfit increase in percentage for strike-rake (upper left panel), strike-dip (lower left panel) and dip-rake (upper right panel) 2-D modelling subspaces (see Section 4.3). Gray colours of grid points indicate the mean misfit (colorbar) for each grid point. (b) Two best solutions (beach-ball: compression = black, dilation = white) and 25 next best solutions (gray lines).

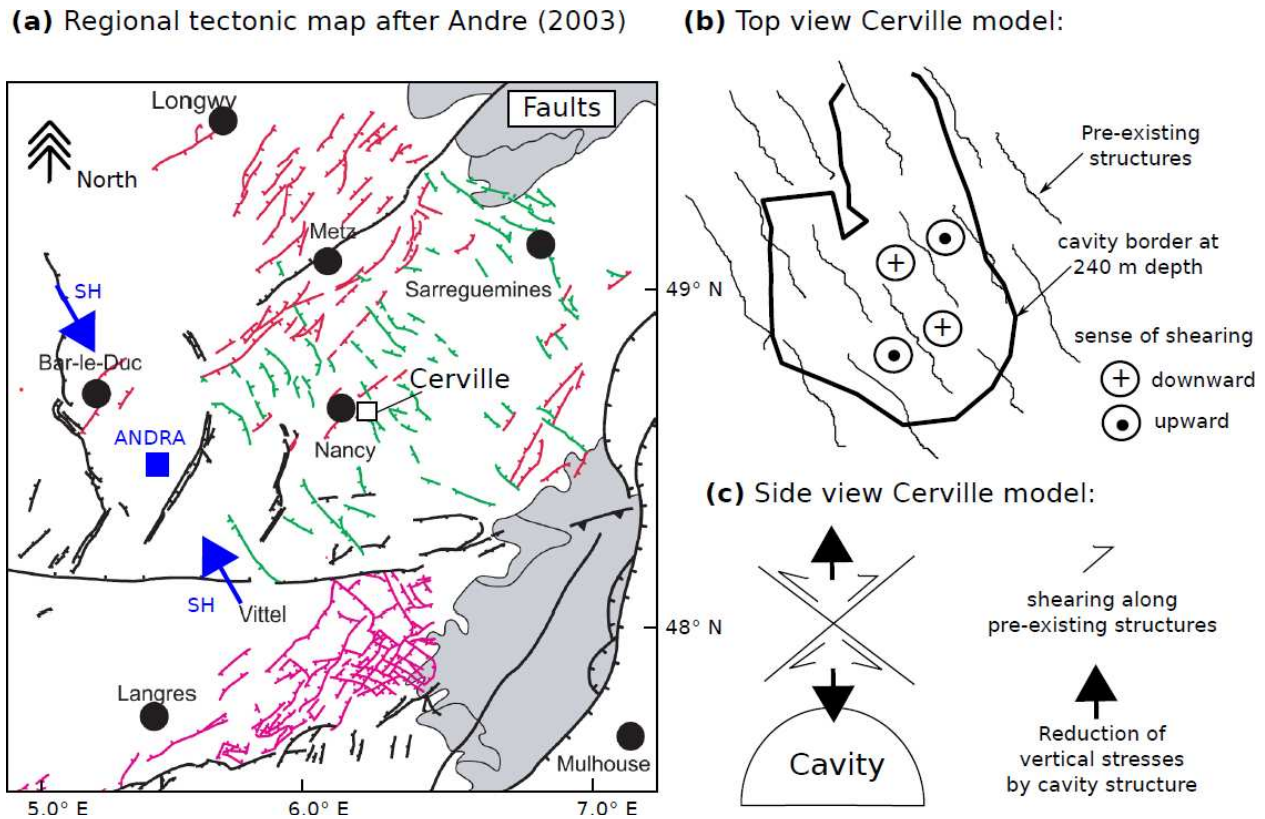


**Figure 13.** Amplitude ratio fit for *inversion 2*. Comparison of observed (dashed lines) (Fig. 11) and synthetic (colored points) average amplitude ratios for *solution 1* (a) and *solution 2* (b). Like in Figure 7, the synthetic ratios were smoothed by averaging the amplitude ratios for 2° grid points to 10° grid points to simulate multipathing effects in the observed ratios. Each set of observed and synthetic amplitude ratios, i.e. each type N/E, T/ZR and R/ZT, is normalized by division with its absolute maximum value (see text).





**Figure 14.** Comparison between number of detected P waves of dataset 4 with radiation coefficients ( $R_p$ ) for the NW-SE and SE-SW striking  $ds$  models. (a)-(b) The number of detected P wave phases from station 62 as a function of incidence (a) and backazimuth (b) angles. (c)-(d)  $R_p$  shown as a function of incidence and backazimuth angles.

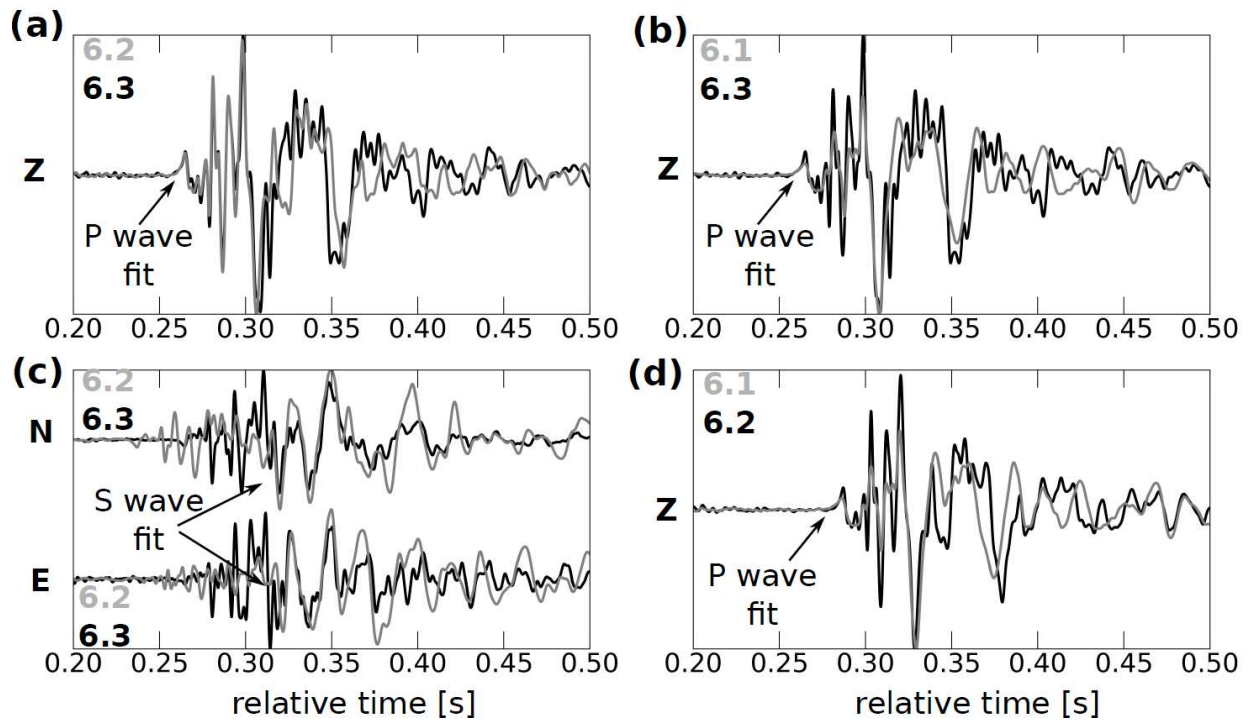


**Figure 15.** Model illustrating a possible relationship between pre-existing fault structures and the observed consistency in source mechanisms. (a) Regional tectonic map was modified from Andre (2003). The orientation of the maximal horizontal compressive stress  $S_H$  (blue arrows), with  $\sim N150^\circ$ , was taken from measurements obtained at the ANDRA (French national radioactive waste management agency) study site (blue square) (Cornet & Rockel 2012; Gunzburger & Magnenet 2014; Heidbach et al. 2010; Wileveau et al. 2007), around 100 km east of Cerville (white square). (b)-(c) Suggested pre-existing structures at Cerville that were reactivated as thrust fault planes when vertical compressive stress was significantly reduced during underground excavation.

**Table A1.** Estimated velocities and  $Q$  factors. First column indicates stations used for cross-correlation and spectral ratio approach. Uncertainties for velocities correspond to standard deviation observed for all the 20 events, while velocity values correspond to the mean. Uncertainties for  $Q$  factors correspond to the standard deviation of all  $Q$  factor values determined for the 20 events, while the final  $Q$  factor values were determined by using the average spectrum of the 20 events. S wave velocities and  $Q$  factors could be determined only between three component stations (62 and 63) (Fig. 1).

used station pairs	Depth [m]	VP [km/s]	VS [km/s]	VP/VS	QP	QS
61 and 62	0 - 62	$1.69 \pm 0.05$			$6 \pm 3$	
61 and 63	0 - 127	$2.15 \pm 0.05$			$11 \pm 3$	
62 and 63	62 - 127	$2.9 \pm 0.1$	$1.3 \pm 0.12$	$2.3 \pm 0.3$	$42 \pm 14$	$24 \pm 7$

## Cross-correlation example for event A



**Figure A1.** Cross-correlation example. (a)-(d) Waveforms for one event A (Fig. 1a) below stations 6 1-3 shown for the vertical (Z) and horizontal (N, E) station components. Waveforms for both stations of one considered station couple (black and gray lines) are aligned using the time lags obtained from the maximum correlation coefficient.