



HAL
open science

Modifications of *Phleum pratense* grass pollen allergens following artificial exposure to gaseous air pollutants (O₃, NO₂, SO₂)

Françoise Rogerieux, D. Godfrin, Hélène Senechal, Alexandre Motta, Maryse Marliere, Gabriel Peltre, Ghislaine Lacroix

► To cite this version:

Françoise Rogerieux, D. Godfrin, Hélène Senechal, Alexandre Motta, Maryse Marliere, et al.. Modifications of *Phleum pratense* grass pollen allergens following artificial exposure to gaseous air pollutants (O₃, NO₂, SO₂). *International Archives of Allergy and Immunology*, 2007, 143 (2), pp.127-134. 10.1159/000099079 . ineris-00961913

HAL Id: ineris-00961913

<https://ineris.hal.science/ineris-00961913>

Submitted on 20 Mar 2014

HAL is a multi-disciplinary open access archive for the deposit and dissemination of scientific research documents, whether they are published or not. The documents may come from teaching and research institutions in France or abroad, or from public or private research centers.

L'archive ouverte pluridisciplinaire **HAL**, est destinée au dépôt et à la diffusion de documents scientifiques de niveau recherche, publiés ou non, émanant des établissements d'enseignement et de recherche français ou étrangers, des laboratoires publics ou privés.

Modifications of *Phleum pratense* grass pollen allergens following artificial exposure
to gaseous air pollutants (O₃, NO₂, SO₂)

Rogerieux F.¹, Godfrin D.^{2,4,*}, Sénéchal H.^{2,3,*}, Motta A.C.⁵, Marlière M.¹, Peltre G.^{2,4},
Lacroix G.¹

1: Institut National de l'Environnement Industriel et des Risques (INERIS), Verneuil-en-Halatte, France.

2: ESPCI, Laboratoire Environnement et Chimie Analytique (LECA), Allergie et Environnement, Paris, France.

3: INSERM

4: CNRS

5: University Medical Center Groningen, University of Groningen, The Netherlands.

* These authors have contributed to this study equally

Short title: Air pollution and pollen allergens.

Key words: traffic-related pollution, grass pollen, allergen, two-dimensional

electrophoresis, ozone, nitrogen dioxide, sulphur dioxide

Corresponding author:

Françoise ROGERIEUX

INERIS

Parc Technologique ALATA BP2

60550 Verneuil-en-Halatte

France.

E-mail: francoise.rogerieux@ineris.fr

Phone: (+33) 3-44-55-63-15

Fax: (+33) 3-44-55-66-05

Abstract

Background: Air pollution is frequently proposed as a potential cause for the increased incidence of allergy in industrialised countries. Our objective was to investigate the impact of the major gaseous air pollutants on grass pollen allergens.

Methods: Timothy grass pollen was exposed to O₃, NO₂, SO₂ alone or mixed. Allergen contents were analysed by 2D-immunoblot using grass pollen-sensitive patient sera.

Results: For O₃-treated pollen, immunoblotting showed an acidification of allergens Phl p 1b, 4, 5 and 6 and an IgE recognition decrease in Phl p 1, 2, 6, 13. NO₂-exposure induced a decrease in Phl p 2, 5b and 6 recognition and SO₂-treatment induced a decrease in Phl p 2, 6 and 13 recognition. Moreover, samples treated with a mix of NO₂ / O₃ or NO₂ / SO₂ showed a higher decrease in allergen content, compared to samples treated with only one pollutant. The O₃ acidification was also observed with the mix NO₂/O₃.

Conclusion: Exposure of pollen to gaseous pollutants induced a decrease in allergen detection in pollen extracts. This decrease could be due to a mechanical loss of allergens from the altered pollen grains and/or. post-translational modifications affecting allergen recognition by IgE.

Introduction

Respiratory allergic diseases are increasing world-wide in both prevalence and severity, affecting in particular subjects living in urban areas^{1, 2}. Although the role played by air pollution has yet to be clarified, a body of evidence suggests that urbanisation, with its high levels of transport emissions and a westernised lifestyle are linked to the rising frequency of these diseases observed in most of the industrialised countries³⁻⁵. Atmospheric pollution is a complex mixture of gaseous and particulate compounds interacting with each other. The main classical gaseous air pollutants are nitrogen dioxide (NO₂), ozone (O₃) and sulphur dioxide (SO₂). Table I summarise for each one, the main sources and European norms for atmospheric concentrations compared to the doses used in our study.

Laboratory studies confirmed the epidemiological evidences that inhalation of some pollutants, either individually or in combination, adversely affects lung function in asthmatics⁶⁻⁹ and increases asthma severity¹⁰⁻¹². However, the exact nature and role of outdoor pollutants in allergic sensitisation is still not entirely clear¹³.

Alternatively, air pollution can directly affect pollen grains. As an example, exposure to pollutants (CO, NO₂ and SO₂ at 10,000 ppm each) of 3 tree species and 1 grass pollens, has been shown to alter the allergen content^{14, 15}. After exposure of *P. pratense* pollen to high concentrations of SO₂ (16.5 mg/m³=7 ppm), but not to NO₂ (1 mg/m³=1 ppm), Phl p 5 recognition using mAb Bo1 was significantly reduced depending on exposure duration¹⁶. Pollen that had been collected at road-sides showed significantly reduced allergen release in comparison with pollen collected in rural meadows¹⁷. Moreover morphological modifications were reported in pollen shape and tectum under polluted conditions^{18, 19}. Pollen grains collected from polluted areas were covered with large amounts of pollutants such as airborne particles, heavy

metals, nitrate, sulphur¹⁶. Furthermore, our laboratory experiments have shown that NO₂ (0.5 to 50 ppm) and O₃ (0.1 to 5 ppm) treatments can alter pollen tectum and facilitate intra-cytoplasmic granules release, in dose-dependent manner²⁰. These granules, which contain most of the pollen major allergens, have been implicated in thunderstorm-associated asthma^{21, 22}. They have also been shown to trigger primary and secondary allergic responses in pollen-sensitised Brown Norway rats^{23, 24}. Recently, *Zinia* pollen exposed to polluted air has been shown to trigger higher allergic responses in guinea pig¹⁸.

The aim of the present study was to characterise modifications of *P. pratense* pollen allergenic content following artificial exposure to the major gaseous air pollutants O₃ (0.1 ppm), NO₂ (2 ppm) and SO₂ (2 ppm). Based on our previous study²⁰, the pollutant concentrations used were the ones inducing the lowest increase of damaged pollen and intra-cytoplasmic granules release compared to air-exposed pollen. Compared to the ones used in most of the studies, these low concentrations were up to 10 times the European warning levels (Table I). Differing from other previous similar studies, an original fluidised bed exposure system was used in our study, in order to mimic environmental exposures of pollen and allergens were detected using sensitive patient sera after separation by 2D-PAGE electrophoresis.

Material and methods

Pollen and pollen extract

Pollen from *Phleum pratense* (Timothy grass) and *Dactylis glomerata* (Orchard grass) were purchased from Allergon (AB, Angelholm, Sweden) and stored at 4°C (non-exposed pollen). For pollen extracts, 50 mg of pollen were suspended in 500 microL of distilled water, incubated on a rotating drum for 1 hour at room temperature and then centrifuged for 10 min at 10,000 g²⁵. The supernatant was stored at -20°C until

use. Proteins concentrations were assessed as described by Bradford²⁶ and by Lowry *et al.*²⁷ using bovine serum albumin as a standard.

Pollen exposure to pollutants in fluidized-bed

The exposure system consisted of a glass cylinder (250-mm height, 20-mm diameter) with a porous glass plate at the bottom. Two grams of *P. pratense* pollen were placed in the cylinder and formed a suspension of fine particles 25 to 30 mm thick from the porous glass plate. Dry air alone or with pollutants (0.1 ppm O₃, 2 ppm NO₂, 2 ppm SO₂, the mix of 0.1 ppm O₃ and 2 ppm NO₂ or the mix of 2 ppm NO₂ and 2 ppm SO₂) were injected from the bottom at a constant rate of 1.2 L/min, for 4 hours. O₃ was generated by passing oxygen through an UV-ionizer (Sonimix 6023, LN Industries SA, Geneva). Ozone concentration was monitored inside the exposure system by an O₃ analyzer (O₃ 41M, Environnement SA, France) and adjusted by modifying the UV lamp intensity. Concentrations of NO₂ and SO₂ were obtained from gas containers prepared and certified by the supplier (Air Liquide, France). Homogenous pollen exposure was obtained by a slight contact of the cylinder with a vortex²⁰.

2D PAGE

Proteins from pollen extracts were separated by isoelectricfocusing (IEF) in a 4% polyacrylamide gel (CleanGel IEF, GE Healthcare, AB, Uppsala, Sweden) containing 2 % (w/v) Servalyt[®] pH 2-11 (Serva, Heidelberg, Germany) in a Multiphor II electrophoresis chamber (AB). Two adjacent 4-mm-wide strips of a focused protein extract were cut and submitted side by side to a SDS-PAGE separation on a 8-18% gradient gel (ExcelGel, AB), given 2 quasi identical 2D separation. One of the 2-D gel separation was silver-stained according to Blum *et al.*²⁸ and the other used for an immunoblot.

Immunoblots

After 2-D gel electrophoresis, proteins were electroblotted onto a nitrocellulose (NC) sheet (Schleicher & Schull, Basel, Switzerland) with a semi-dry Novablot apparatus, according to the manufacturer's instructions (1h15, 1 mA/cm²). All following incubations were performed using phosphate-buffered saline (PBS), containing 0.3% Tween 20 (PBS-Tw) at room temperature (about 22°C). NC sheets were blocked 1 hour with PBS-Tw and incubated (overnight) with either grass pollen-allergic patient sera (1:10), or mouse monoclonal antibody (mAb) directed against *Dactylis glomerata* allergen 4 (Dac g 4), revealing also Phl p 4²⁹ (1:1 500) or rabbit polyclonal antibody directed against rDac g 3³⁰ (1:500). Phl p 3 can be easily identified by the polyclonal antibody directed against rDac g 3 due to their sequence homology in grass pollen family³¹. After extensive washing, the NC sheets were incubated 2 hours with either alkaline phosphatase (AP)-conjugated goat anti-human IgE (1:700, Sigma-Aldrich, St. Louis, USA), or AP-conjugated rabbit anti-mouse IgG (1:10 000, Sigma-Aldrich) or AP-conjugated mouse anti-rabbit IgG (1:5 000, Sigma-Aldrich). AP activity was detected using 5-bromo-4-chloro-3-indolyl phosphate and nitroblue tetrazolium (Sigma-Aldrich) in 0.1 mole.L⁻¹ Tris buffer, pH 9.5.

Patient sera

Sera number 10, 12 and 25 were selected from a group of 26 grass pollen allergic donors, for their ability to recognise a great number of grass pollen allergens after blotting³².

Results:

1. Non-exposed and air-exposed pollen

To study the effect of gaseous pollutants on proteins and allergens, two-dimensional separations were performed on water-soluble extract from non-exposed and exposed *P. pratense* pollens. The 2D-gel silver staining of non-exposed protein extract

revealed about 30-40 proteins with a large spectrum of relative molecular masses (Mr) and isoelectric points (pI) (fig 1a). Most of the proteins had a Mr comprised between 14 and 77 kD and a pI between 3.5 and 10.6.

The 2D immunoblot patterns of non-exposed timothy grass pollen extract obtained using the three patient sera were similar. Patient serum #10 revealed about 30 allergen spots, named in www.allergome.com database, with a Mr range from 14 to 90 kD and a pI range from 3.5 to 10.6 (fig 1b). Allergens were located mainly around five different Mr ranges: 75-90, 65-70, 40-57, 25-26 and 17-24 kD, each of them showing a great pI variability. Three spots at 75-90 kD, pI 3.2-3.9 (unknown high molecular mass allergen) named [a] and 5 spots at 65-70 kD, pI 6.4-8.3 were revealed and could correspond to Phl p 13 isoforms. Using a mAb against Dac g 4 which reveals also Phl p 4, one spot (around 70 kD, pI 9.5-10.0) was recognised (data not shown). Two acidic allergen spots (pI 5.0-5.7) and 3 other acidic (4.8-5.7), 6 neutral ones (pI 5.8-8.0) and 1 basic one (pI 10.0) were strongly revealed with Mr ranges of 40-57 kD. They could correspond to Phl p 1, 5a, 5b and 1b respectively. Acidic allergen spots (from pI 4.0 to 5.9) were also detected at Mr 25-26 and 17-24 kD, probably corresponding to Phl p 6 and Phl p 2 respectively. Moreover, at Mr 17-24 kD, basic spots (from pI 7.0 to 9.0), named Phl p 3, visualised by the patient serum #10, were also recognised by the anti-Dac g 3 antibodies. This serum recognised weakly a very acidic allergen (pI around 3.0) with low Mr (14-20 kD) corresponding to profilin (Phl p 12). Compared to other tested sera, this one recognised the greatest allergen number and most of the known allergens.

Serum #25 did not reveal Phl p 1b and 4 but recognised all others allergens revealed by serum #10 (data not shown). Serum #12 mainly recognised major allergens e.g. Phl p 1 and 5 (fig 1d). Allergen patterns of aqueous extract from non-exposed timothy

grass pollen, revealed by IgE from patient sera #10 and 25, were similar to these of orchard grass pollen extract (data not shown).

2D-blot performed with extract from air-exposed pollen (Fig 1c) did not show any significant difference compared to non-exposed pollen extract (Fig 1b).

2. Gaseous exposed pollen

2.1. Proteins from different pollen extracts

Timothy grass pollen grains were exposed to air, O₃, NO₂ or SO₂, alone or in combination. Using Bradford and Lowry methods, protein amounts in water soluble pollen extracts showed no significant difference between air-exposed and gaseous pollutant exposed pollens. By Bradford method, protein concentrations were 51.1 ± 3.7, 51.9 ± 3.6, 48.8 ± 8.0, 51.9 ± 4.0 µg of protein per mg of pollen, respectively for air-, O₃-, NO₂- and SO₂-exposed pollen extract.

2.2. 2D protein patterns

No significant differences in the 2D protein patterns were observed between non-exposed (fig 1a), air-exposed and NO₂ and/or SO₂-exposed pollen extracts (data not shown) while O₃ treatment induced acidification of some proteins without visible change in silver staining intensity (fig 2a).

2.3. 2D allergen pattern of O₃ exposed pollen

Acidic shift was also observed at the allergen level with the 3 sera. For example, with serum #10 (fig 2b), allergen Phl p 4 and Phl p 1b switched from pI 10.0 to 8.3. Similarly, the two remaining acidic spots corresponding to Phl p 5a and 6 switched from pI 4.8-5.7 to 4.4-4.8 and from pI 4.0-5.9 to 4.3-4.8 respectively. In addition to this allergen acidification, a decrease in IgE recognition was observed with all sera. At Mr 75-90 kD, the patient serum #10 (fig 2b) revealed only an acidic spot around pI 3.2 corresponding to allergen [a]. Some of Phl p 13 spots in the pI 7-8 area have disappeared. Concerning Phl p 1 and Phl p 5a, IgE recognition decreased and the

Phl p 1b strongly diminished compared to non-exposed pollen extract. Moreover Phl p 6 isoforms with pI 5.7-5.8 disappeared and in the Phl p 2 area (Mr 17-24 kD) a large decrease of isoform numbers was shown.

2.4. 2D allergen pattern of NO₂ exposed pollen

Using the 3 sera, one of the Phl p 5b spots (pI 7.3-7.5) was not detected in the pattern from NO₂-exposed pollen (fig 2c and data not shown). Using sera #10 and 25, two of the Phl p 6 spots (pI 5.7-5.8) have disappeared and one of the Phl p 2 spots (pI 5.7-5.8) was more weakly revealed than in control extract. No other differences were observed.

2.5. 2D allergen pattern of SO₂ exposed pollen

SO₂-treatment induced a decrease of IgE recognition of several allergens using the 3 sera. With serum #10 (fig 2d), Phl p 13 (pI 6.4-8.3), Phl p 6 (pI 5.7-5.8) and Phl p 2 (pI 4.0-5.9) recognitions were strongly decreased when recognitions of major allergens Phl p 1 and 5 showed no significant difference. Whereas using serum #12, we observed a decrease in Phl p 1 and 5 recognition (data not shown).

2.6. 2D allergen pattern of gas mixture exposed-pollen

The allergen patterns obtained with serum #10 from combined gaseous pollutant exposed pollen extracts are shown on figure 3. A strong reduction of IgE recognition was observed for the whole pattern from NO₂/O₃-exposed pollen extract (Fig 3a). In spite of similar allergen patterns, the reduction was slightly more pronounced on NO₂/O₃-exposed pollen (fig 3a) than on O₃-exposed pollen (fig 2b). Allergen acidification shown with O₃ treatment was also observed in this case. The results previously described were also obtained with sera #12 and 25 (data not shown).

In comparison with single pollutant exposed pollens (fig 2c and 2d), allergen pattern from NO₂/SO₂-exposed pollen (fig 3b) revealed a significant decrease of high Mr

allergens: [a], Phl p 4 and 13. The recognition of the other allergens was similar to the one obtained after SO₂ treatment (fig 2b).

Discussion:

When timothy grass pollen exposures were performed with realistic O₃ concentration or/and with NO₂ and SO₂ concentrations 10 times higher than the European warning level, we observed a decrease of some allergen recognition by IgE from three allergic patient sera. Acidification of several allergens was also observed following treatment using O₃ with or without NO₂. These experimental gaseous exposures didn't induce any apparition of *de novo* allergens. The decrease of allergen recognition suggests either the allergen loss during the treatment (for example the release in atmosphere as free allergens) and/or their alteration.

Protein and allergen losses due to urban pollution exposure or to gaseous experimental exposure to high concentrations of pollutants were previously described^{18, 19, 25}. However, in our experiments, we used lower pollutant concentrations than used by the former authors, inducing few damages on pollen grains and a weak intracytoplasmic granules release²⁰. In these conditions, we have not observed any noticeable difference between air- and gaseous pollutant exposed pollen on protein concentration and on silver stained 2D gel profiles. The "allergen loss" hypothesis should be less suitable on the basis of our results but further work is needed. For example, pollen cytoplasmic granules and free allergens release could be measured following pollen exposures to gaseous pollutants.

Air pollutants could have an effect on the biochemical protein properties of pollen grains which might induce a decrease of the allergen recognition by IgEs. Goschnick *et al.*³³ analysed the effect of nitrogen dioxide (1-100 ppm) or ozone (0.1 ppm) treatment on three species of pollen (timothy grass, mugwort and birch), showing

incorporation of nitrogen as nitro-groups into the organic matrix of the pollen wall. Recently, Franze *et al.*³⁴ reported pollen protein nitrations, in particular on birch allergen Bet v1, after exposition to a mixture of NO₂ (4.57 ppm) and O₃ (0.5 ppm). After exposure to this gas mixture, the level of protein nitration depends on the concentration of O₃ and NO₂ and their highly reactive species (NO₃ or HNO₃)³⁴. Furthermore, post-translational modifications, such as hydroxylated proline residues, carbohydrate structures and disulfide formation³⁵ or deglycosylation³⁶, can affect the IgE reactivity. Also an alteration of the major phosphorylation site of an important allergenic epitope of casein affects the allergenicity of this protein³⁷. In our experiments, we hypothesise that the observed decrease in IgE recognition induced by gaseous pollutant exposures could be due to a post-translational modification as previously described³³⁻³⁵. Identification of the allergen composition by mass spectrometry should allow the characterisation of chemical modifications that may be responsible of the decrease of allergen recognition. It could be interesting to investigate the role of these chemical modifications in the modified pollen allergenicity *in vivo*. For this purpose, we have studied the allergenicity of these polluted grass pollens in sensitised Brown Norway (BN) rats and until now we failed to observe any significant modification of the specific humoral (pollen-IgE) and cellular (lymphocyte proliferation in response to pollen) allergic responses (unpublished data).

In conclusion, the pollen exposure to gas pollutants induces a slight decrease in allergen detection in pollen extracts. This decrease could be due to post-translational modifications affecting allergen detection by IgE patient sera. Our preliminary results on BN rats emphasize the difficulty to evaluate nowadays the impact of these allergen

modifications on the allergenicity *in vivo*. Knowledge of this phenomenon would require further studies with different animal models of allergy.

Figure legends:

Figure 1: 2D gel analysis of water-soluble extract from non-exposed and air-exposed *P. pratense* pollen (a): silver staining of proteins from non-exposed pollen. 2D immunoblots from (b): non-exposed, (c): air-exposed pollen revealed by IgE from grass pollen sensitive patient serum #10 and (d): non-exposed pollen revealed by serum #12. Each *P. pratense* allergens (Phl p) was surrounded and named (Allergome database) on the non-exposed blot (b). Isoelectric points (pI) (on the top) and relative molecular masses (Mr) (on the left) are indicated for each gel.

Figure 2: 2D gel analysis of water-soluble extracts from O₃-, NO₂- and SO₂-exposed *P. pratense* pollen. Pollen grains were exposed during 4 hours to 0.1 ppm O₃, 2 ppm of NO₂ or 2 ppm SO₂. (a): silver staining of proteins from O₃-exposed pollen. 2D immunoblots of (b): O₃-, (c): NO₂- and (d): SO₂-exposed pollen allergens revealed by IgE from grass pollen sensitive patient serum #10. Isoelectric points (pI) (on the top) and relative molecular masses (Mr) (on the left and right) are indicated for each gel.

Figure 3: 2D gel analysis of water-soluble extracts from NO₂/O₃- and NO₂/SO₂-exposed *P. pratense* pollen. Pollen grains were exposed during 4 hours to a mixture of either (a): 2 ppm NO₂ and 0.1 ppm O₃ or (b): 2 ppm NO₂ and 2 ppm SO₂. 2D immunoblots of (a): NO₂/O₃- and (b): NO₂/SO₂-exposed pollen allergens revealed by IgE from grass pollen sensitive patient serum #10. Isoelectric points (pI) (on the top) and relative molecular masses (Mr) (on the left and right) are indicated for each gel.

Acknowledgement

This work has been supported by the research project BCRD-AP2001-DRC05 provided by the French Ministry of the Ecology and Sustainable Development. We are very grateful to Christiane Mayer for laboratory assistance and we thanks Frédéric Bois for helpful discussion.

References

1. D'Amato G. Environmental urban factors (air pollution and allergens) and the rising trends in allergic respiratory diseases. *Allergy* 2002; 57 Suppl 72:30-3.
2. Ring J, Kramer U, Schafer T, Behrendt H. Why are allergies increasing? *Curr Opin Immunol* 2001; 13:701-8.
3. von Mutius E, Weiland SK, Fritzsche C, Duhme H, Keil U. Increasing prevalence of hay fever and atopy among children in Leipzig, East Germany. *Lancet* 1998; 351:862-6.
4. Nicolai T, Carr D, Weiland SK, Duhme H, von Ehrenstein O, Wagner C, et al. Urban traffic and pollutant exposure related to respiratory outcomes and atopy in a large sample of children. *Eur Respir J* 2003; 21:956-63.
5. Trasande L, Thurston GD. The role of air pollution in asthma and other pediatric morbidities. *J Allergy Clin Immunol* 2005; 115:689-99.
6. Jenkins HS, Devalia JL, Mister RL, Bevan AM, Rusznak C, Davies RJ. The effect of exposure to ozone and nitrogen dioxide on the airway response of atopic asthmatics to inhaled allergen: dose- and time-dependent effects. *Am J Respir Crit Care Med* 1999; 160:33-9.
7. Barck C, Lundahl J, Hallden G, Bylin G. Brief exposures to NO₂ augment the allergic inflammation in asthmatics. *Environmental Research* 2005; 97:58-66.
8. Tunnicliffe WS, Harrison RM, Kelly FJ, Dunster C, Ayres JG. The effect of sulphurous air pollutant exposures on symptoms, lung function, exhaled nitric oxide, and nasal epithelial lining fluid antioxidant concentrations in normal and asthmatic adults. *Occup Environ Med* 2003; 60:e15.
9. Vagaggini B, Taccola M, Cianchetti S, Carnevali S, Bartoli ML, Bacci E, et al. Ozone exposure increases eosinophilic airway response induced by previous allergen challenge. *Am J Respir Crit Care Med* 2002; 166:1073-7.
10. van Zijverden M, Granum B. Adjuvant activity of particulate pollutants in different mouse models. *Toxicology* 2000; 152:69-77.
11. Nygaard UC, Alberg T, Bleumink R, Aase A, Dybing E, Pieters R, et al. Ambient air particles from four European cities increase the primary cellular response to allergen in the draining lymph node. *Toxicology* 2005; 207:241-54.
12. Dybing E, Lovdal T, Hetland RB, Lovik M, Schwarze PE. Respiratory allergy adjuvant and inflammatory effects of urban ambient particles. *Toxicology* 2004; 198:307-14.
13. Ring J, Eberlein-Koenig B, Behrendt H. Environmental pollution and allergy. *Ann Allergy Asthma Immunol* 2001; 87:2-6.
14. Ruffin J, Liu MY, Sessoms R, Banerjee S, Banerjee UC. Effects of certain atmospheric pollutants (SO₂, NO₂ and CO) on the soluble amino acids, molecular weight and antigenicity of some airborne pollen grains. *Cytobios* 1986; 46:119-29.
15. Ruffin J, Williams D, Banerjee UC, Pinnix K. The effect of some environmental gaseous pollutants on pollen-wall proteins of certain airborne pollen grains. *Grana* 1983; 22:171-5.
16. Behrendt H, Becker WM, Fritzsche C, Sliwa-Tomczok W, Tomczok J, Friedrichs KH, et al. Air pollution and allergy: experimental studies on modulation of allergen release from pollen by air pollutants. *Int Arch Allergy Immunol* 1997; 113:69-74.

17. Behrendt H, Beckert WM. Localization, release and bioavailability of pollen allergens: the influence of environmental factors. *Curr Opin Immunol* 2001; 13:709-15.
18. Chehregani A, Majde A, Moin M, Gholami M, Ali Shariatzadeh M, Nassiri H. Increasing allergy potency of *Zinnia* pollen grains in polluted areas. *Ecotoxicol Environ Saf* 2004; 58:267-72.
19. Senechal H, Mislin-Bocquet C, Desvaux FX, Verhill A, Peltre G. Pollen grains and urban air pollution: a three year study (abstract). *Allergy* 2001; 56:46.
20. Motta A, Marliere M, Peltre G, Steerenberg PA, Lacroix G. Traffic-related air pollutants induce the release of allergen-containing cytoplasmic granules from grass pollen. *Int Arch Allergy Immunol* 2006; 139:294-8.
21. Suphioglu C. Thunderstorm asthma due to grass pollen. *Int Arch Allergy Immunol* 1998; 116:253-60.
22. Marks GB, Colquhoun JR, Girgis ST, Koski MH, Treloar AB, Hansen P, et al. Thunderstorm outflows preceding epidemics of asthma during spring and summer. *Thorax* 2001; 56:468-71.
23. Motta A, Peltre G, Dormans J, Withagen CET, Lacroix G, Bois F, et al. Phleum pratense pollen starch granules induce humoral and cell-mediated immune responses in a rat model of allergy. *Clin Exp Allergy* 2004; 34:310-4.
24. Motta AC, Dormans JA, Peltre G, Lacroix G, Bois FY, Steerenberg PA. Intratracheal Instillation of Cytoplasmic Granules from *Phleum pratense* Pollen Induces IgE- and Cell-Mediated Responses in the Brown Norway Rat. *Int Arch Allergy Immunol* 2004; 135:24-9.
25. Lhuissier F, Lefebvre P, Gibouin D, Senechal H, Mayer C, Desvaux FX, et al. Structural and biochemical study of the effects of carbon monoxide on tree and grass pollen: labelling CO with O-18. *J Trace Microprobe Tech* 1999; 17:461-76.
26. Bradford MM. A rapid and sensitive method for the quantitation of microgram quantities of protein utilizing the principle of protein-dye binding. *Anal Biochem* 1976; 72:248-54.
27. Lowry OH, Rosebrough NJ, Farr AL, Randall RJ. Protein measurement with the Folin phenol reagent. *J Biol Chem* 1951; 193:265-75.
28. Blum H, Beier H, Gross H. Improved silver staining of plant proteins, RNA and DNA in polyacrylamide gels. *Electrophoresis* 1987; 8:93-9.
29. Leduc-Brodard V, Inacio F, Jaquinod M, Forest E, David B, Peltre G. Characterization of Dac g 4, a major basic allergen from *Dactylis glomerata* pollen. *J Allergy Clin Immunol* 1996; 98:1065-72.
30. Guerin-Marchand C, Senechal H, Bouin AP, Leduc-Brodard V, Taudou G, Weyer A, et al. Cloning, sequencing and immunological characterization of Dac g 3, a major allergen from *Dactylis glomerata* pollen. *Mol Immunol* 1996; 33:797-806.
31. Andersson K, Lidholm J. Characteristics and immunobiology of grass pollen allergens. *Int Arch Allergy Immunol* 2003; 130:87-107.
32. Batard T, Basuyaux B, Lambin P, Bremard-Oury C, Hamilton RG, David B, et al. Isotypic analysis of grass pollen-specific immunoglobulins in human plasma. 1. Specialization of certain classes and subclasses in the immune response. *Int Arch Allergy Immunol* 1993; 100:68-78.
33. Goschnick J, Schuricht J. Surface and depth analysis of pollen treated with atmospheric trace gases (abstract). *J Aerosol Sci* 1996; 27:S229-S30.

34. Franze T, Weller MG, Niessner R, Poschl U. Protein nitration by polluted air. *Environ Sci Technol* 2005; 39:1673-8.
35. Petersen A, Schramm G, Schlaak M, Becker WM. Post-translational modifications influence IgE reactivity to the major allergen Phl p 1 of timothy grass pollen. *Clin Exp Allergy* 1998; 28:315-21.
36. Batanero E, Crespo JF, Monsalve RI, Martin-Esteban M, Villalba M, Rodriguez R. IgE-binding and histamine-release capabilities of the main carbohydrate component isolated from the major allergen of olive tree pollen, Ole e 1. *J Allergy Clin Immunol* 1999; 103:147-53.
37. Bernard H, Meisel H, Creminon C, Wal JM. Post-translational phosphorylation affects the IgE binding capacity of caseins. *Febs Letters* 2000; 467:239-44.

Table I: Sources and comparison of European norms and doses used of gaseous pollutants (NO₂, O₃, SO₂)

Pollutant	Source (main season concerned)	European norms	Doses used in the study
NO ₂	Oxidation of NO emitting during high temperature combustion of fuels (power station and transport roads) ALL THE YEAR	52 µg/m ³ (average over year) Warning level : 400 µg/m ³ (3h)	2 ppm (4h) : 3800 µg/m ³
O ₃	Secondary reaction between volatile organic compounds and NO _x under UV SUMMER	120 µg/m ³ (average over 8 h) Information level : 180 µg/m ³ Warning level : 240 µg/m ³	0.1 ppm (4h) : 200 µg/m ³
SO ₂	Combustion of fossil fuels containing sulphur (mainly from power stations) WINTER	20 µg/m ³ (average over year) Warning level : 500 µg/m ³ (3 h)	2 ppm (4h) : 5300 µg/m ³

Figure 1

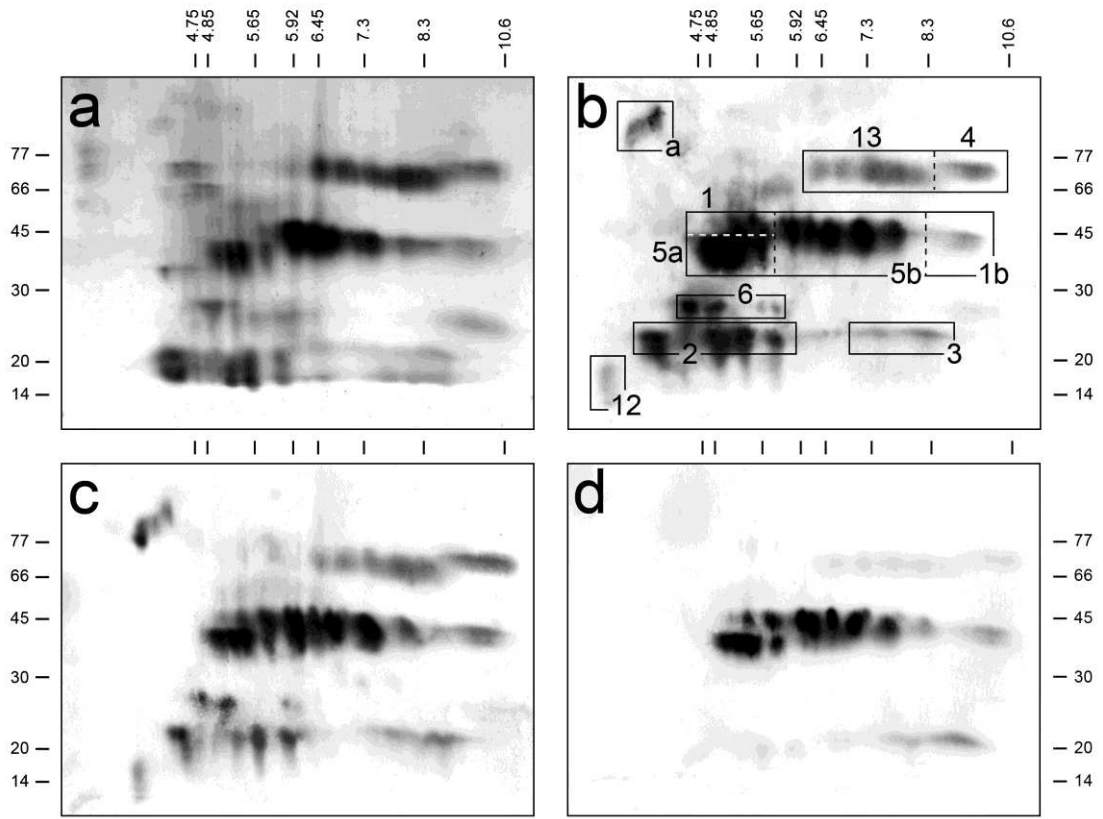


Figure 2

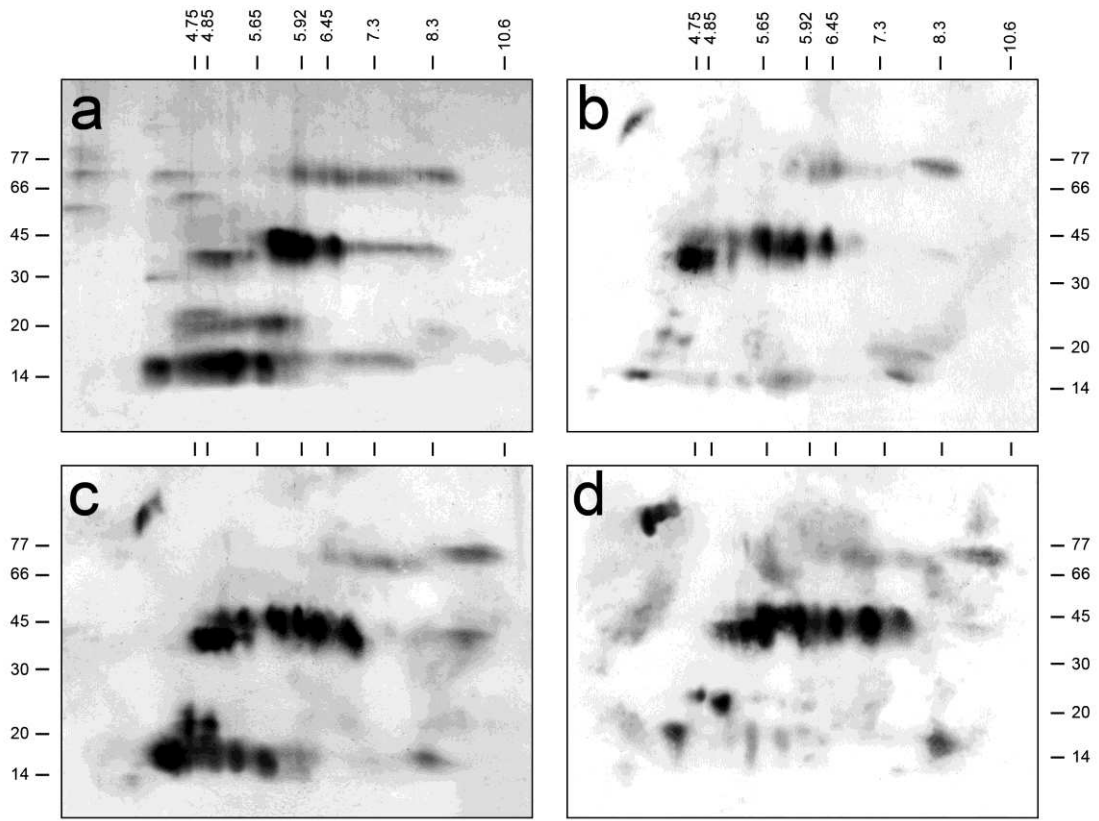


Figure 3

